

**APPROCHE AUX INSTRUMENTS**

**WALLIS HIHIFO**

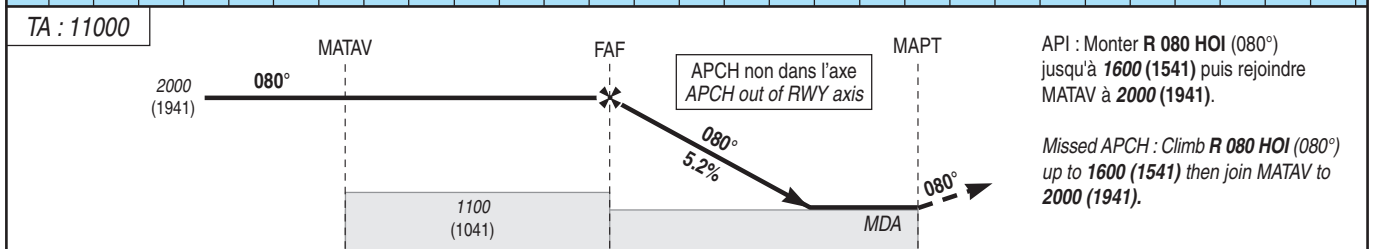
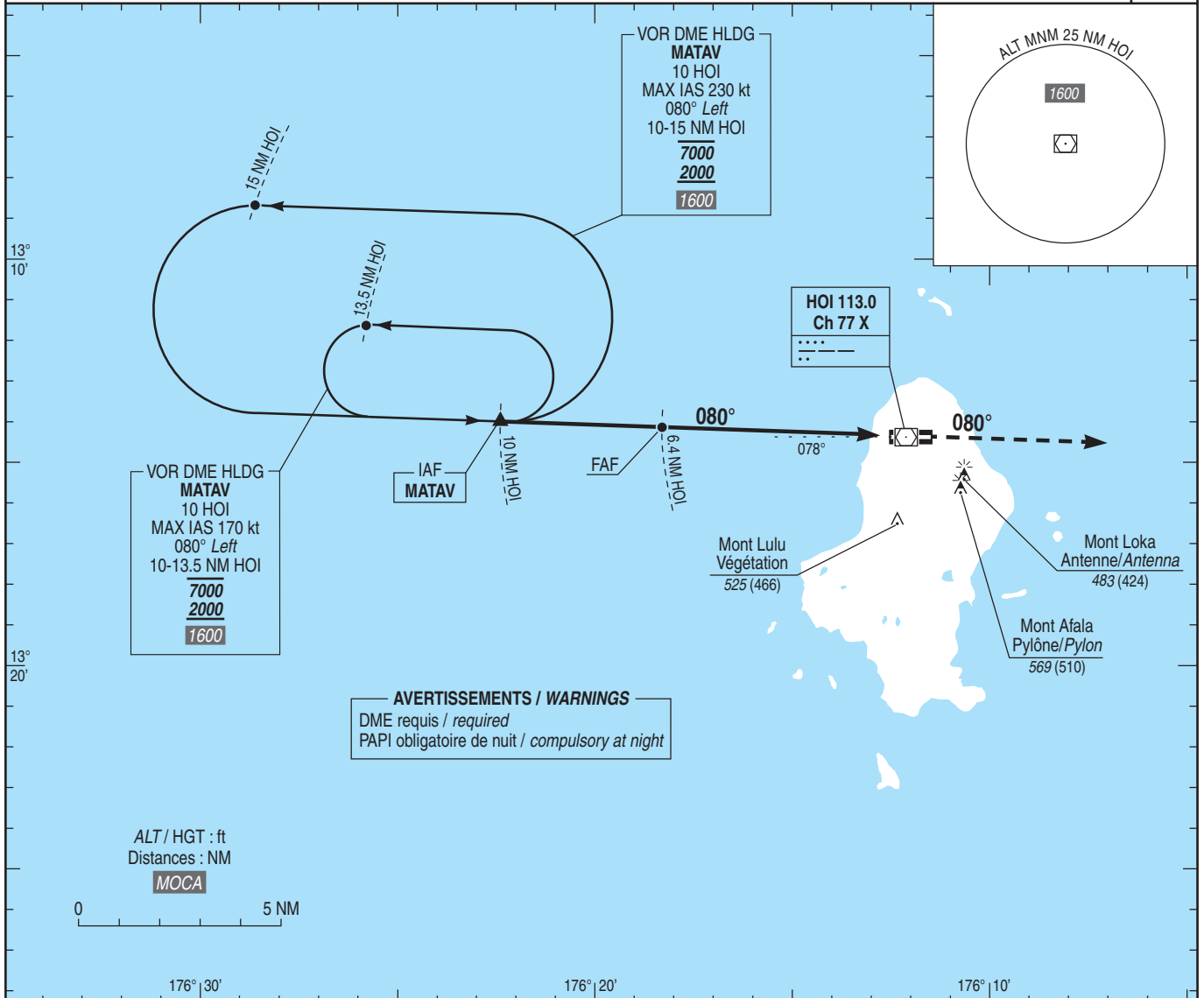
Instrument approach

CAT A B C D

ALT AD : 79, THR : 59 (3 hPa)

VOR Z RWY 08

APP : NIL TWR : NIL AFIS : WALLIS Information 118.300 (L) Absence AFIS : A/A (118.300) FR seulement / only	VAR 12° E (2020)
---	------------------------



→ THR (NM)	9.58	5.98	0.88
→ DME (NM)	10	6.4	1.3

MNM AD : distances verticales en pieds, RVR et VIS en mètres / Vertical distances in feet, RVR and VIS in meters. REF HGT : ALT THR

CAT	VOR Z			MVL/Circling <sup>(1)</sup>		DME HOI				
	MDA (H)	RVR	OCH	MDA (H)	VIS	NM	6	5	4	3
A	480 (420)	1500	417	870 (810)	1500	ALT	1880	1560	1250	930
B	580 (520)	1600	417	870 (810)	1600	(HGT)	(1821)	(1501)	(1191)	(871)
C	680 (620)	2400	440	970 (910)	2400					
D	780 (720)	3600	440	970 (910)	3600					

Observations / Remarks : (1) Absence ATS : HJ seulement / day time only.

		70 kt	85 kt	100 kt	115 kt	130 kt	145 kt	160 kt	185 kt
IAF - FAF	3.6 NM	3 min 05	2 min 32	2 min 10	1 min 53	1 min 40	1 min 29	1 min 21	1 min 10
FAF - MAPT	5.1 NM	4 min 22	3 min 36	3 min 04	2 min 40	2 min 21	2 min 07	1 min 55	1 min 39
VSP (ft/min)		370	450	530	610	690	770	850	980