

APPROCHE AUX INSTRUMENTS

WALLIS HIHIFO

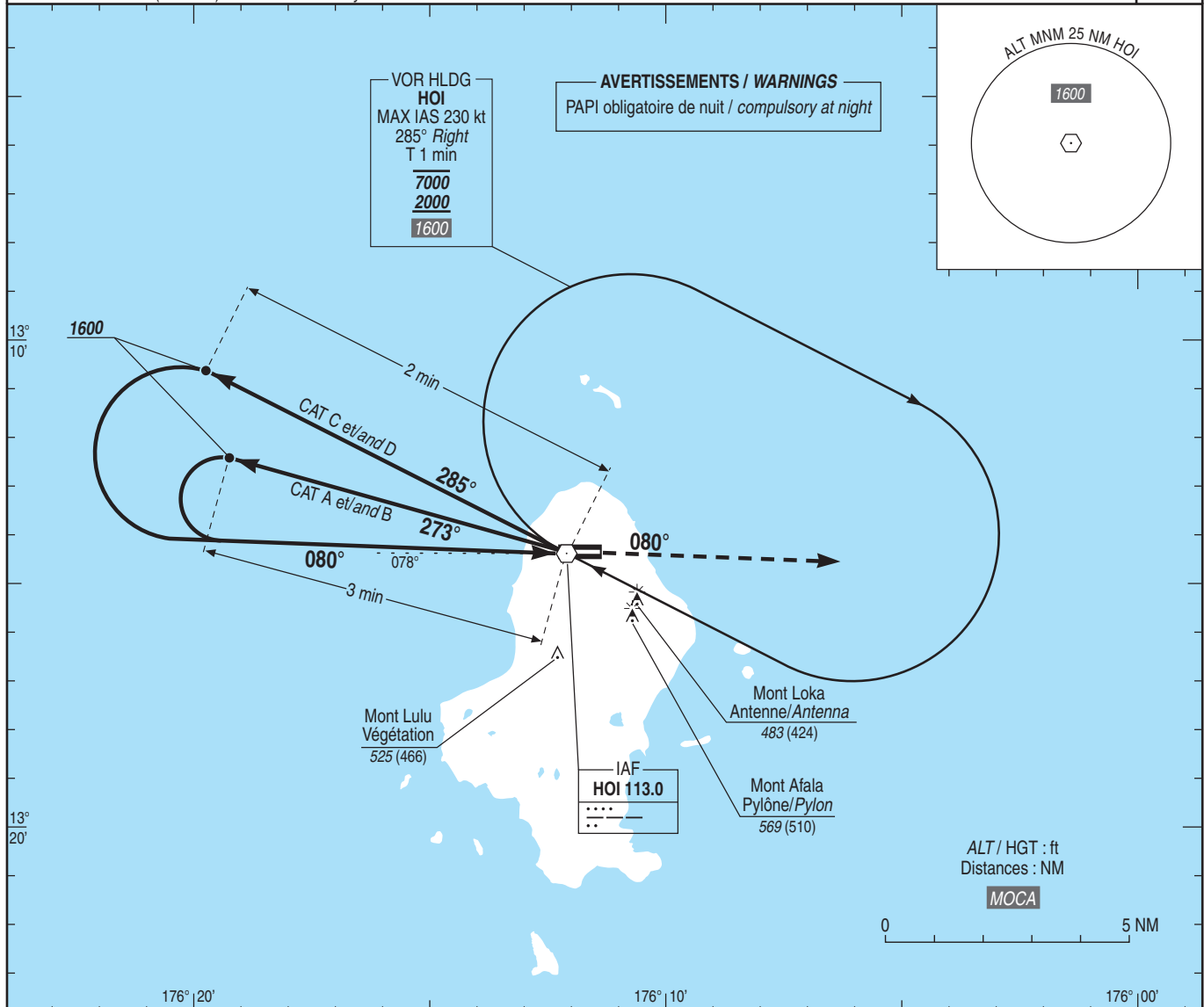
Instrument approach

CAT A B C D

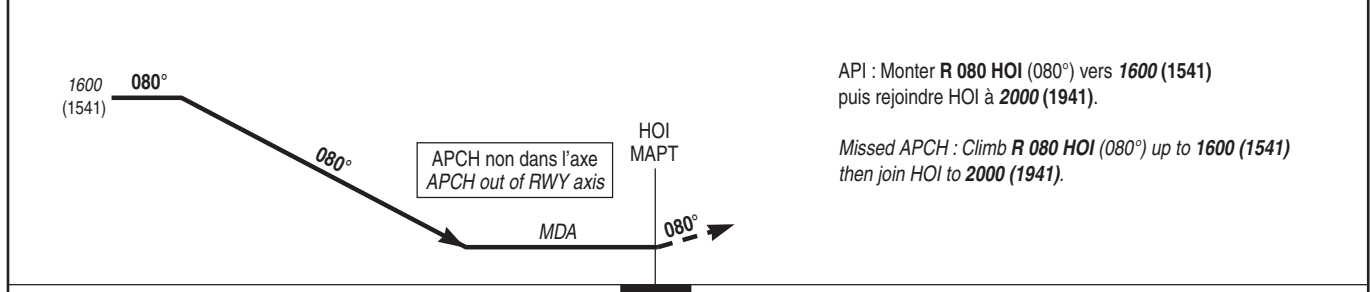
VOR Y RWY 08

ALT AD : 79, THR : 59 (3 hPa)

APP : NIL TWR : NIL AFIS : WALLIS Information 118.300 (L) Absence AFIS : A/A (118.300) FR seulement / only	VAR 12° E (2020)
---------------------------------------------------------------------------------------------------------------------	------------------------



TA : 11000



API : Monter **R 080 HOI (080°)** vers **1600 (1541)** puis rejoindre HOI à **2000 (1941)**.
 Missed APCH : Climb **R 080 HOI (080°)** up to **1600 (1541)** then join HOI to **2000 (1941)**.

MNM AD : distances verticales en pieds, RVR et VIS en mètres / Vertical distances in feet, RVR and VIS in meters. REF HGT : ALT THR

CAT	VOR Y			MVL/Circling ⁽¹⁾	
	MDA (H)	RVR	OCH	MDA (H)	VIS
A	620 (560)	1500	558	870 (810)	1500
B	620 (560)	1600		870 (810)	1600
C	680 (620)	2400		970 (910)	2400
D	780 (720)	3600		970 (910)	3600

Observations / Remarks : (1) Absence ATS : HJ seulement / daytime only.