

APPROCHE AUX INSTRUMENTS

WALLIS HIHIFO

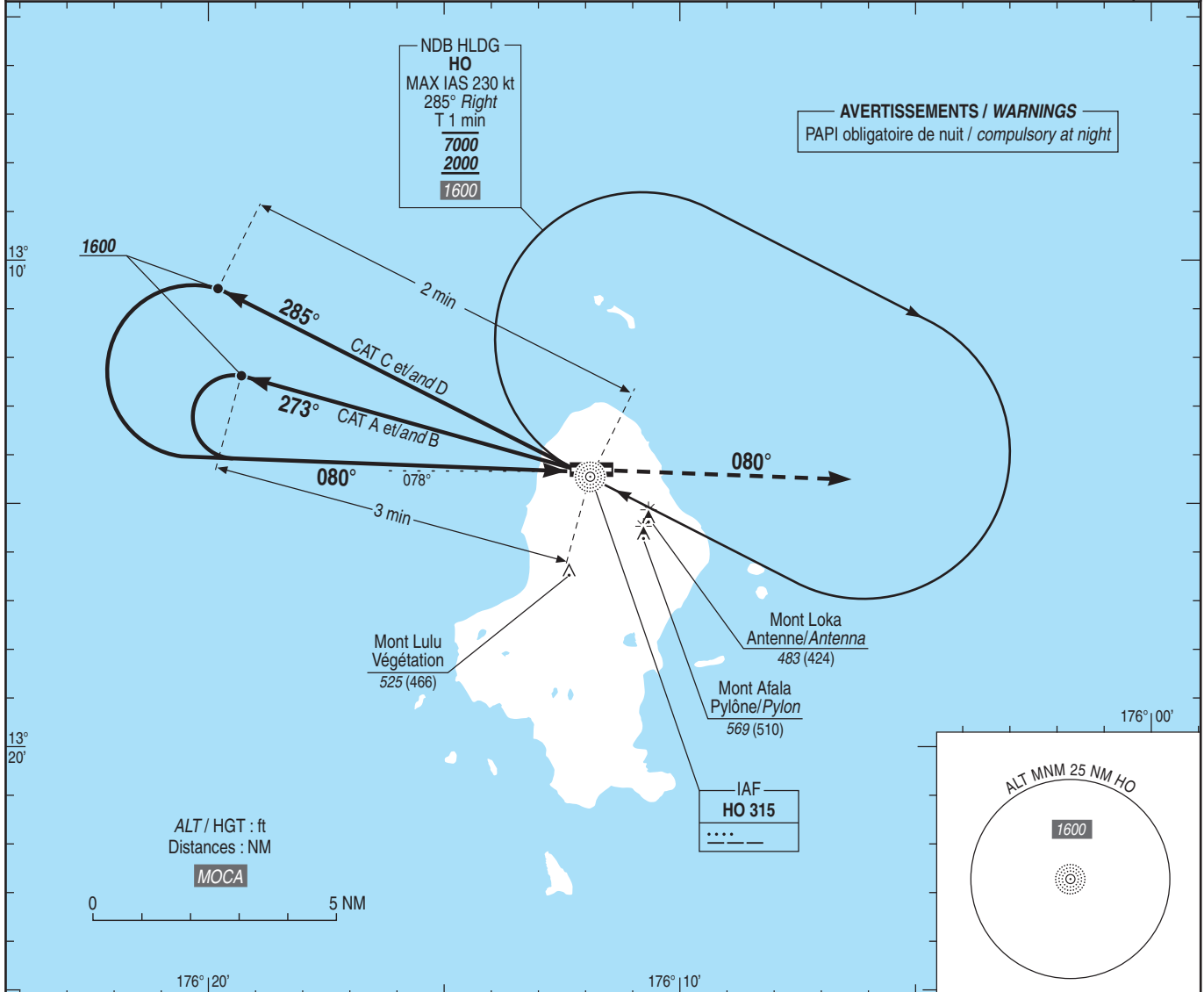
Instrument approach

CAT A B C D

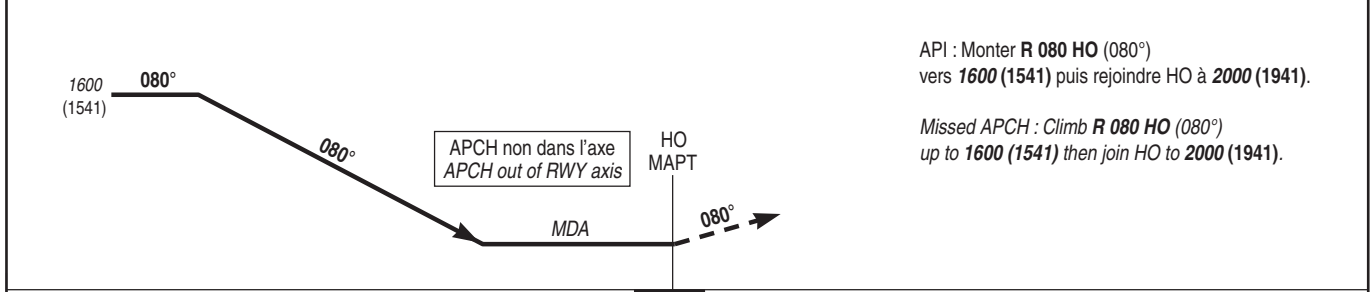
ALT AD : 79, THR : 59 (3 hPa)

NDB RWY 08

APP : NIL TWR : NIL AFIS : WALLIS Information 118.300 (L) Absence AFIS : A/A (118.300) FR seulement / only	VAR 12° E (2020)
---	------------------------



TA : 11000



API : Monter **R 080 HO** (080°)
vers **1600 (1541)** puis rejoindre HO à **2000 (1941)**.

Missed APCH : Climb **R 080 HO** (080°)
up to **1600 (1541)** then join HO to **2000 (1941)**.

MNM AD : distances verticales en pieds, RVR et VIS en mètres / Vertical distances in feet, RVR and VIS in meters. REF HGT : ALT THR

CAT	NDB			MVL/Circling ⁽¹⁾	
	MDA (H)	RVR	OCH	MDA (H)	VIS
A	700 (640)	1500	640	870 (810)	1500
B	700 (640)	1600	640	870 (810)	1600
C	750 (690)	2400	686	970 (910)	2400
D	780 (720)	3600	686	970 (910)	3600

Observations / Remarks : (1) Absence ATS : HJ seulement / daytime only.