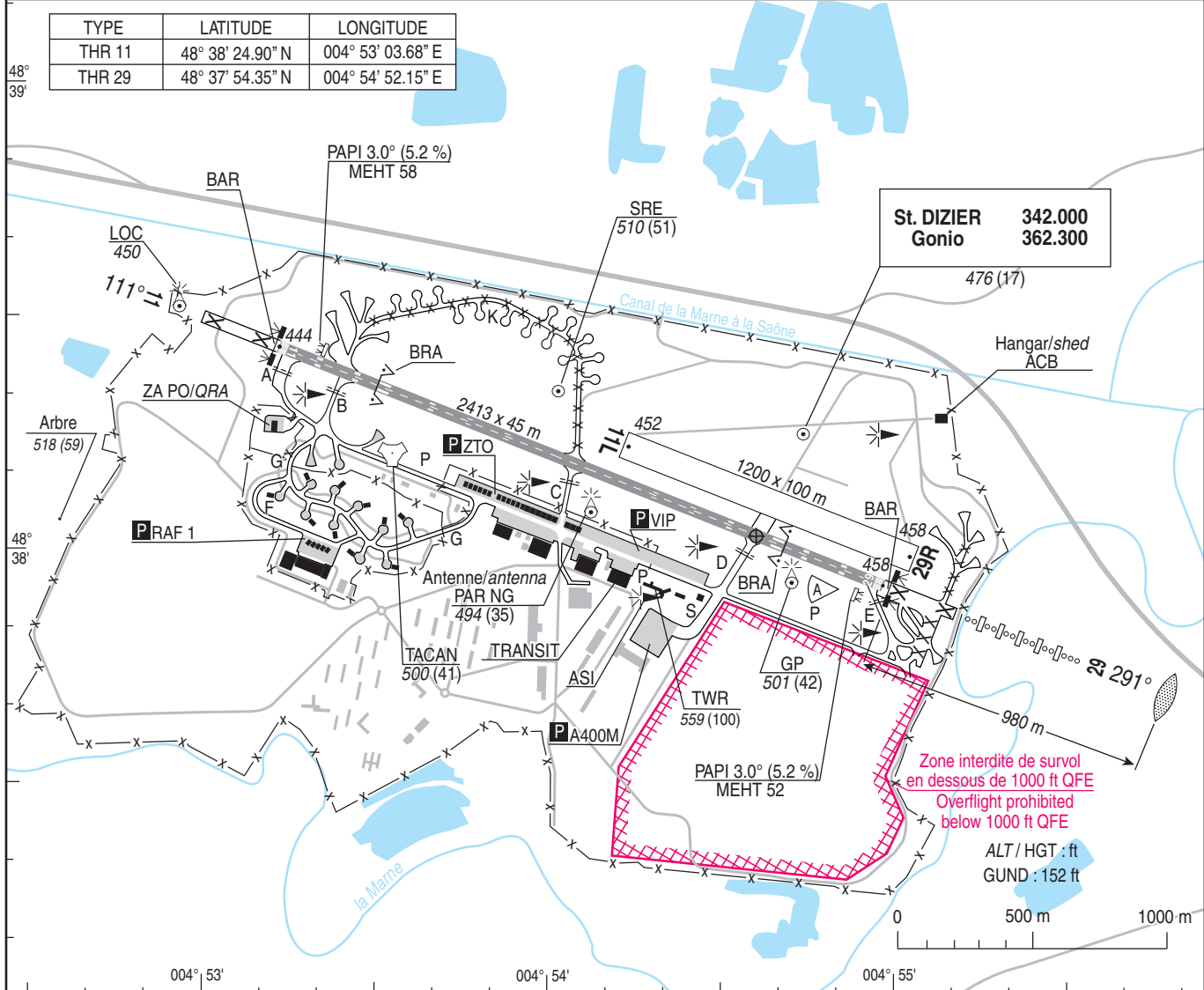


CARTE D'AERODROME
Aerodrome chart

Usage restreint
Restricted use

SAINT DIZIER ROBINSON
48 38 01 N - 004 54 29 E
ALT AD : 459 (17 hPa)

| | |
|--|----------------------|
| SOL/GND : 122.1 257.8 ATS : LUN-JEU/MON-THU 0730-1620 VEN/FRI 0730-1400 HN O/R la veille avant 1530/ outside these HDR O/R the previous day before 1530 SAM-DIM-JF O/R le dernier J.O. avant 1430/ SAT-SUN-Hol O/R the last working day before 1430 - (ETE/SUM - 1H) Section opérations : HOR ATS BNIA : BORDEAUX (voir/see GEN) AVT : HOR ATS F34 - O150 | VAR 2°E (2020) |
|--|----------------------|



| RWY | BALISAGE/Lighting | | TORA | TODA | ASDA | LDA | NATURE Surface | RESIST. Strength | MINIMUMS TKOF (RVR : m) | | | |
|-----|-------------------|-----|------|------|------|------|----------------|------------------|-------------------------|-------|-------|-------|
| | APCH | RWY | | | | | | | CAT A | CAT B | CAT C | CAT D |
| 11 | NIL | LIH | 2413 | 2413 | 2413 | 2413 | Revêtu | 22 F/C/W/T (1) | 500 | 500 | 500 | 500 |
| 29 | OACI CAT 1 | LIH | 2413 | 2413 | 2413 | 2413 | Paved | | 500 | 500 | 500 | 500 |

DEPARTS OMNIDIRECTIONNELS / OMNIDIRECTIONAL DEPARTURES

Voir / See AD2.22

| | |
|--|--|
| BALISAGE / Lighting : RWY11-29 : Seuils/THR : Vert/Green Extrémités/End : Rouge/Red. TWY : BL. | OBSERVATIONS / Remarks : - (1) THR11: 34 R/B/W/T THR29: 26 R/B/W/T -Voir / See AD2.20 à / To AD2.23 |
|--|--|