

APPROCHE AUX INSTRUMENTS

LE MANS ARNAGE

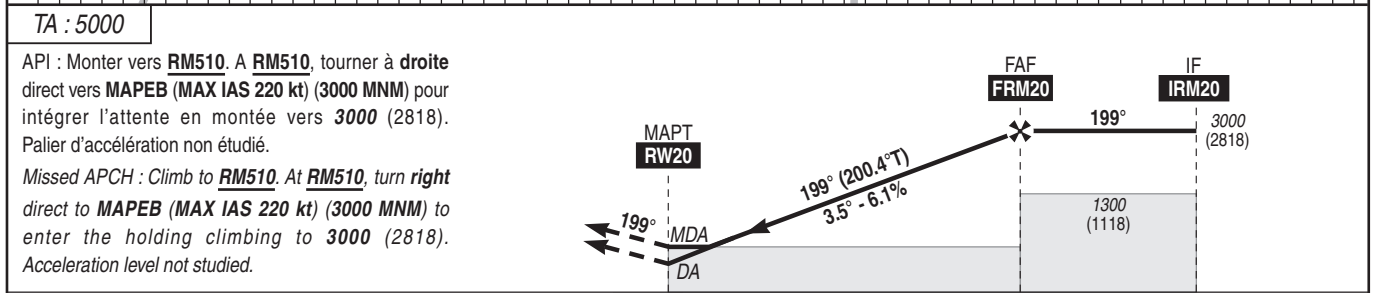
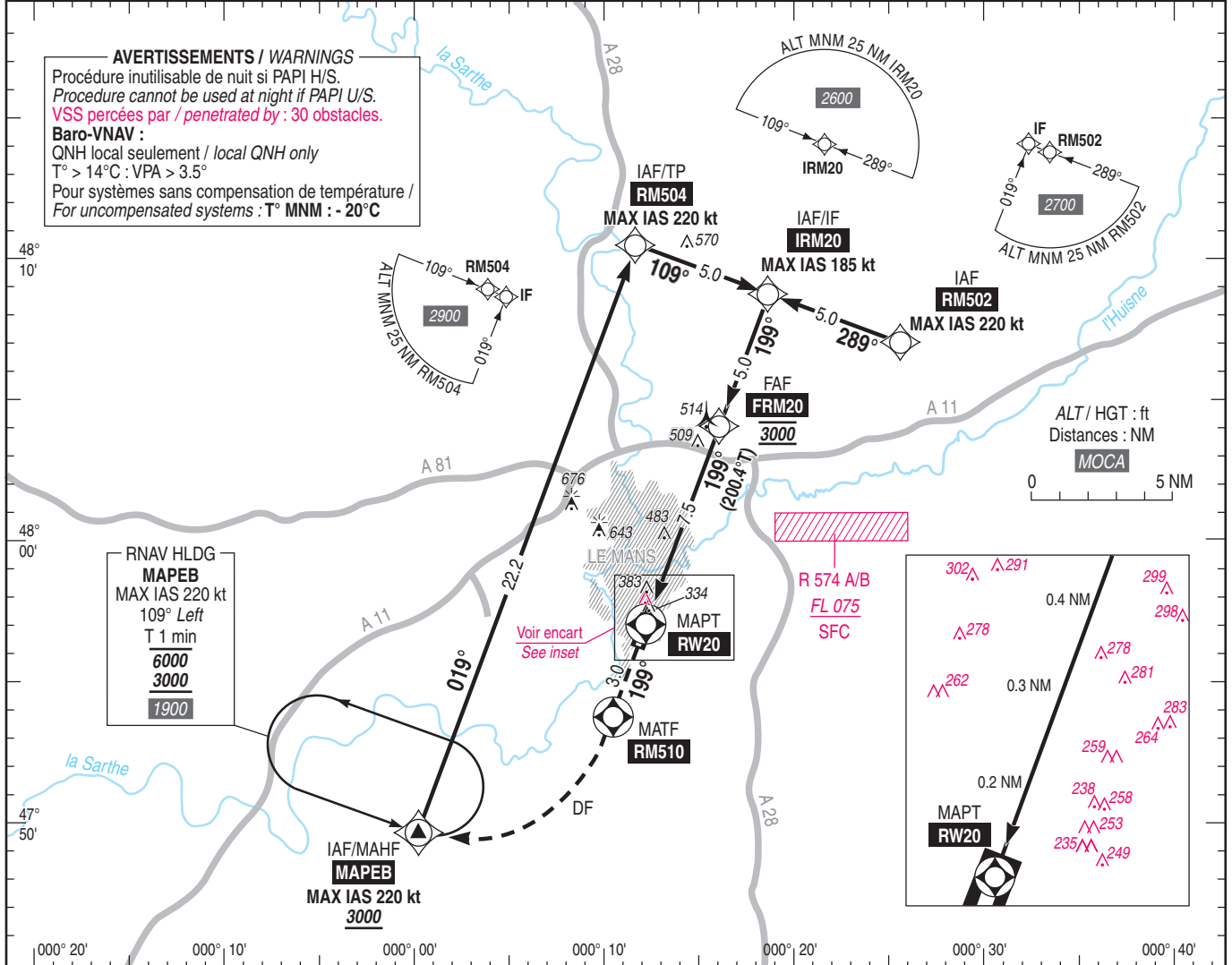
Instrument approach

CAT A B C

ALT AD : 194, DTHR : 182 (7 hPa)

RNP RWY 20

APP : NIL TWR : NIL AFIS : LE MANS Information 125.905 Absence ATS : A/A (125.905) FR uniquement. Obtenir le QNH de TOURS auprès de PARIS ACC. A/A (125.905) FR only. Obtain TOURS QNH from PARIS ACC.	RNP APCH	EGNOS Ch 96769 E20A TCH : 49	VAR 1°E (2025)
--	----------	---------------------------------------	----------------------



MNM AD : distances verticales en pieds, RVR et VIS en mètres / vertical distances in feet, RVR and VIS in metres. REF HGT : ALT DTHR

CAT	LPV			LNAV/VNAV			LNAV			MVL / Circling (1)		MVL / Circling (1) absence ATS sans/without QNH local		DIST RW20						
	DA (H)	RVR	OCH	DA (H)	RVR	OCH	MDA (H)	RVR	OCH	MDA (H)	VIS	MDA (H)	VIS	NM	7	6	5	4	3	2
A	760 (580)	1500	292	760 (580)	1500	337	760 (580)	1500		760 (580)	1500	930 (750)	1500	ALT (HGT)	2830 (2648)	2460 (2278)	2090 (1908)	1720 (1538)	1350 (1168)	970 (788)
B	790 (600)	1600	307	790 (600)	1600	352	790 (600)	1600	578	790 (600)	1600	950 (770)	1600							
C	1060 (880)	2400	317	1060 (880)	2400	362	1060 (880)	2400		1060 (880)	2400	1230 (1050)	2400							

Observations / Remarks : (1) MVL interdites à l'Ouest de la piste. Circuit AD RWY 02 main Droite / Circling prohibited West of RWY. Right hand circuit RWY 02. Perte de guidage GNSS durant l'approche / Loss of GNSS guidance during approach : voir / see AIP ENR 1.5.

FAF - MAPT	7.5 NM	70 kt	80 kt	90 kt	100 kt	110 kt	120 kt	130 kt	140 kt	150 kt	160 kt
VSP (ft/min)		6 min 23	5 min 35	4 min 58	4 min 28	4 min 04	3 min 44	3 min 26	3 min 12	2 min 59	2 min 48
		430	495	555	615	680	740	805	865	925	990