

**APPROCHE AUX INSTRUMENTS**

**LORIENT LANN BIHOUE**

Instrument approach

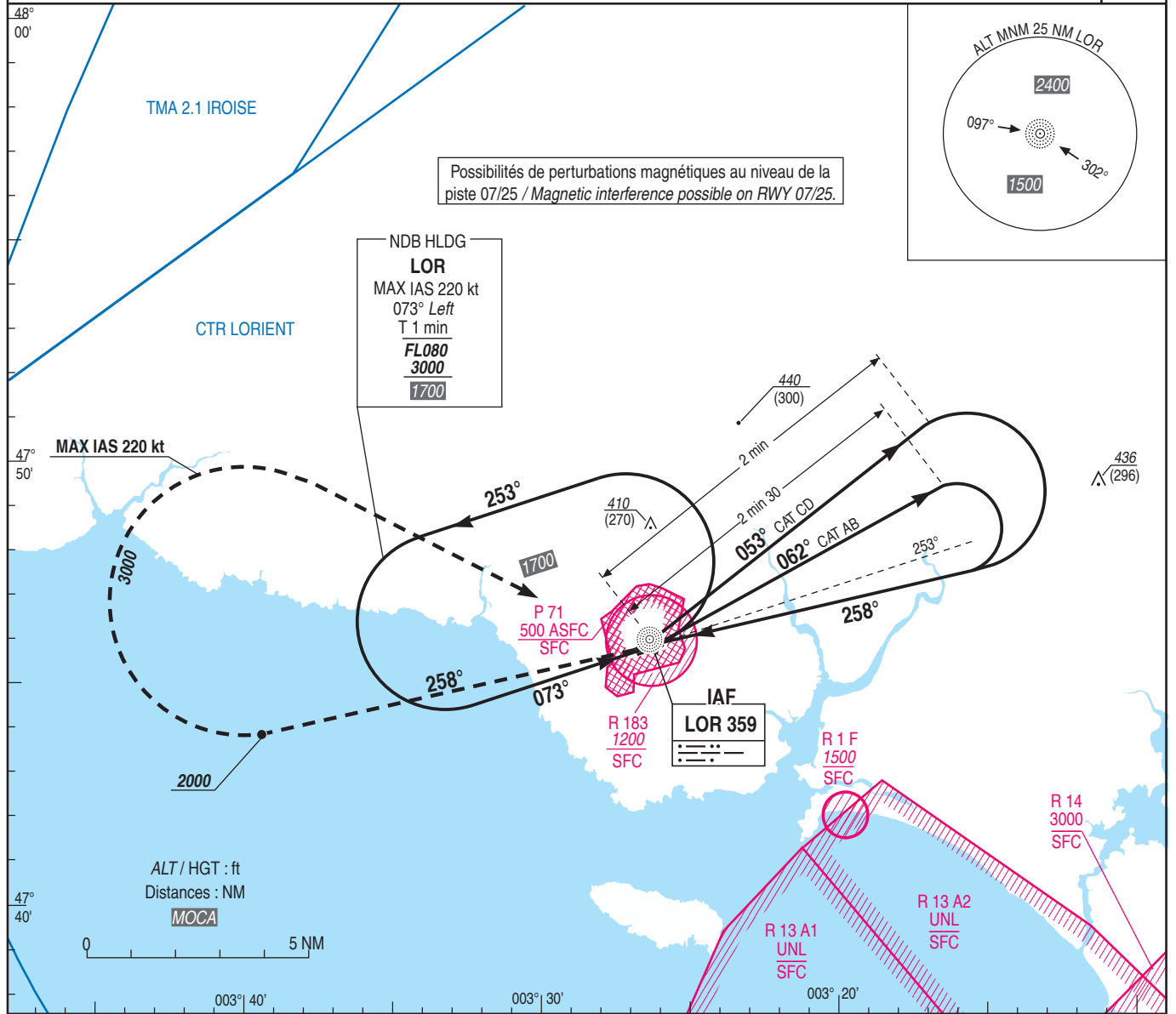
CAT A B C D

ALT AD : 159, DTHR : 140 (5hPa)

NDB RWY25

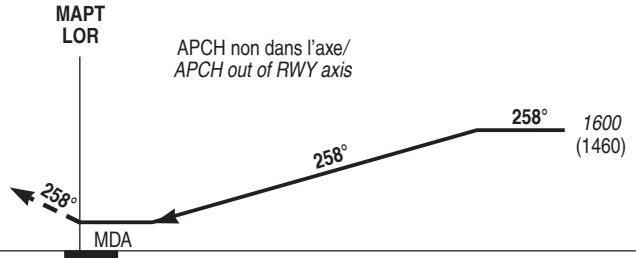
ATIS : 129.125  
APP : LORIENT Approche / Approach 123.000 122.100  
TWR : LORIENT Tour / Tower 122.700 119.700(S)  
AFIS : Lorient INFO 122.700

VAR  
1°W  
(2020)



TA : 5000

API : Monter QDR 258° (RM 258°) vers 3000 (2860).  
A 2000 (1860), tourner à droite vers LOR.  
Ne pas tourner avant le mapt.  
Monter à 2000 (1860) avant d'accélérer en palier.  
  
Missed approach : Climb QDR 258° (Mag track 258°)  
up to 3000 (2860). At 2000 (1860), turn right to LOR.  
Do not turn before mapt.  
Climb to 2000 (1860) prior to level acceleration.



MNM AD : distances verticales en pieds, RVR et VIS en mètres. / Vertical distances in feet, RVR and VIS in metres. REF HGT : ALT DTHR

CAT	NDB			MVL/Circling	
	MDA (H)	RVR	OCH	MDA (H)	VIS
A		1800		710 (570)	1800
B		1800	549	710 (570)	1800
C	690 (550)	1800		810 (670)	2400
D		1800		840 (700)	3600

Observations/Remarks :