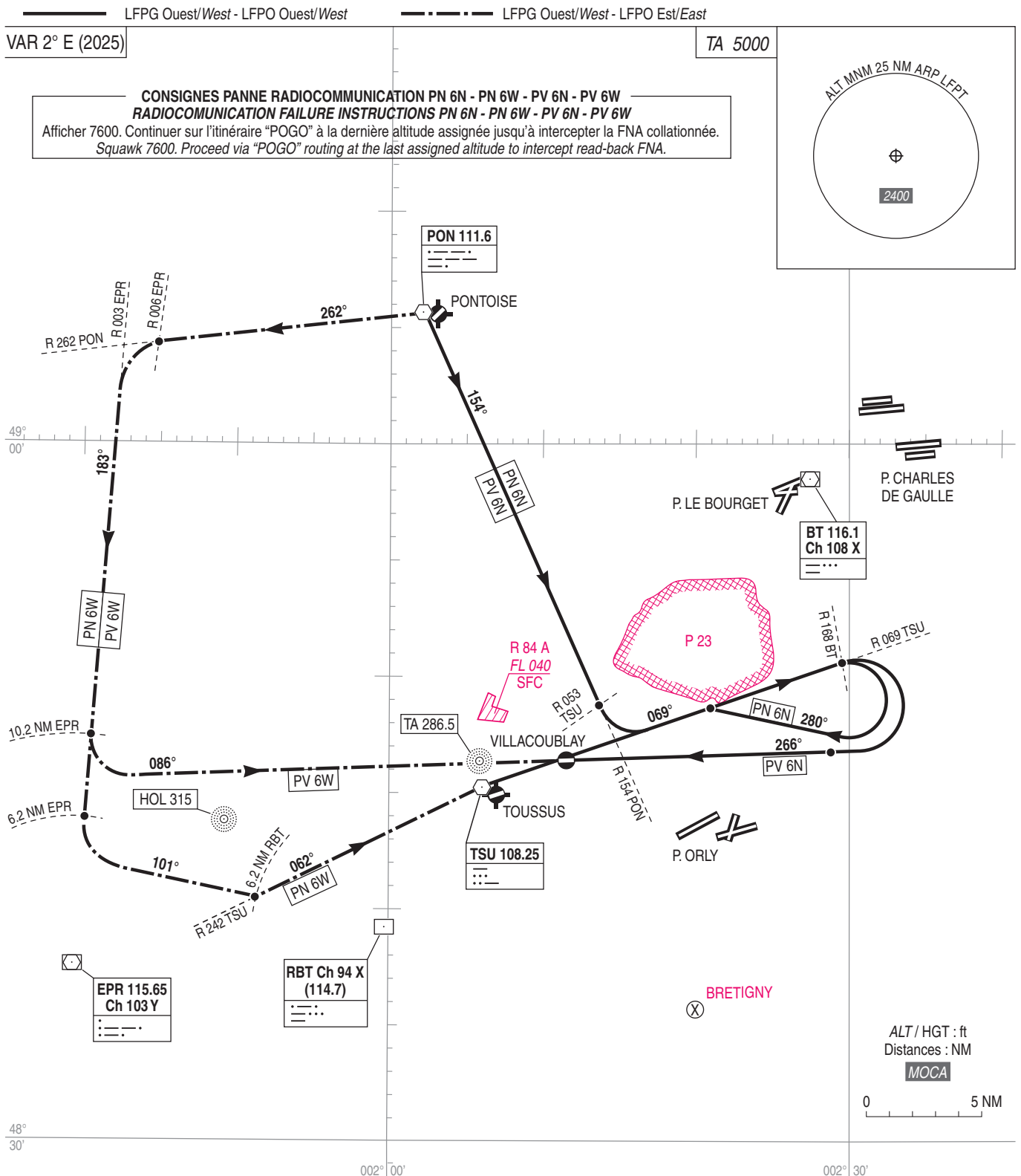


PONTOISE CORMEILLES EN VEXIN
Itinéraires normalisés de liaison RWY 04-22 (POGO)
Connecting routings RWY 04-22 (POGO)

FREQ : voir / see AD 2 LFPT ADC 01
AD 2 LFPN COM 01
AD 2 LFPV COM 01



SPECIAL INSTRUCTIONS : see AD 2 LFPT.22
OMNIDIRECTIONAL DEPARTURES :
- Noise pollution : comply with noise abatement procedures.
- Speed : IAS ≤ 220 kt.
- Gradient : if no specified gradient, comply with gradient of 5.5% MNM.
● Next APCH procedure : see AD 2 LFPN / LFPV IAC FNA.