

**APPROCHE AUX INSTRUMENTS**

**PONTOISE CORMEILLES EN VEXIN**

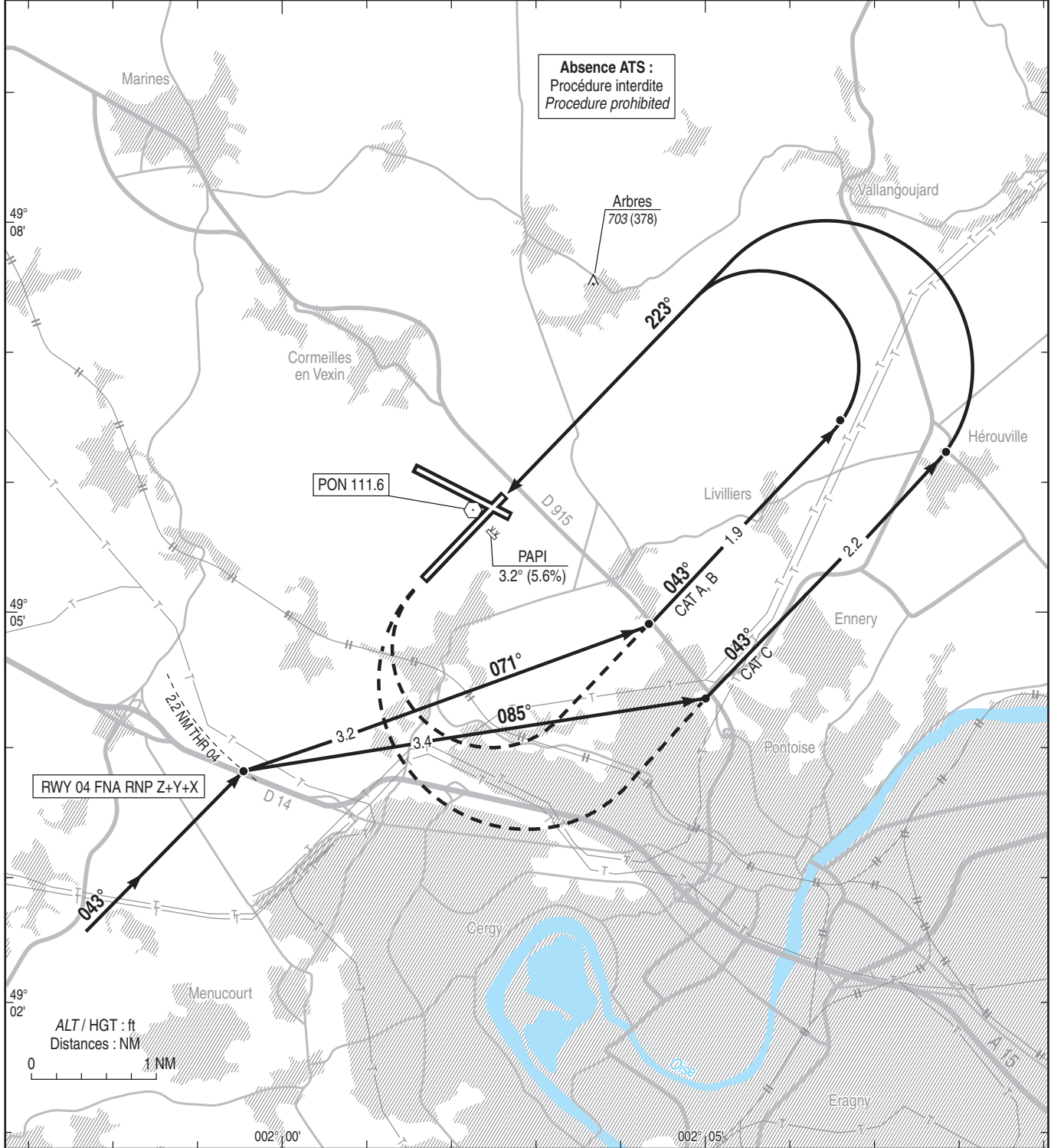
Instrument approach

CAT A B C

ALT AD : 325 (12 hPa), DTHR : 312

VPT RWY 22

<p>ATIS PONTOISE : 124.125                  APP : DE GAULLE Approche /Approach 118.150 - 119.850 - 121.155 - 125.830 - 126.430 - 136.275 - 126.575 (s)                  LE BOURGET Approche /Approach 118.805                  TWR : PONTOISE Tour /Tower 121.200</p>	<p>VAR 2° E (2025)</p>
---	--------------------------------



MNM AD : distances verticales en pieds, VIS en mètres / vertical distances in feet, VIS in metres. REF HGT : ALT AD

CAT	VPT	
	MDA (H)	VIS
A	1000 (680)	1500
B	1000 (680)	1600
C	1100 (780)	2400