

APPROCHE AUX INSTRUMENTS

CHALONS VATRY

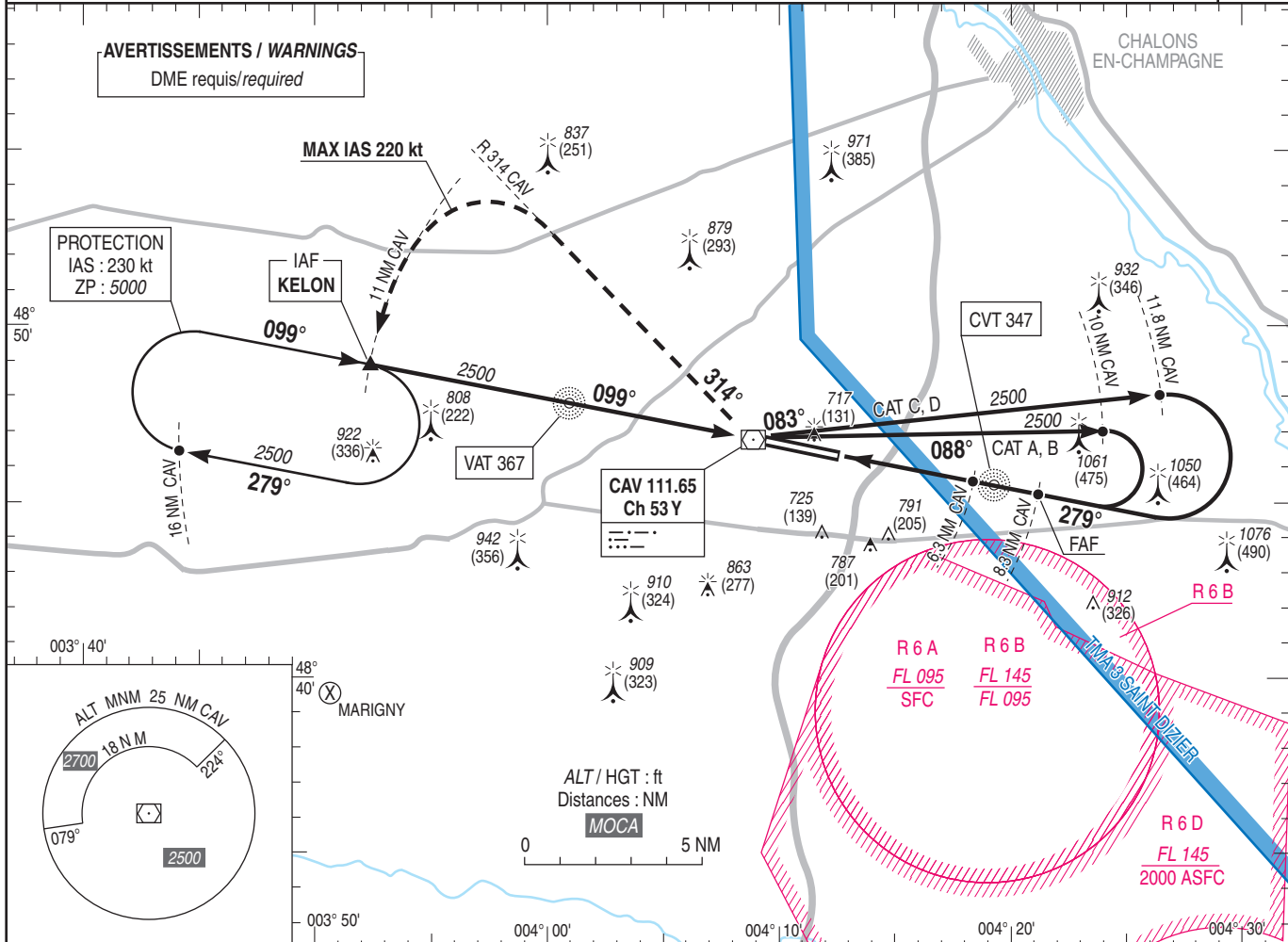
Instrument approach

CAT A B C D

VOR RWY 28

ALT AD : 586 (22 hPa), DTHR : 586

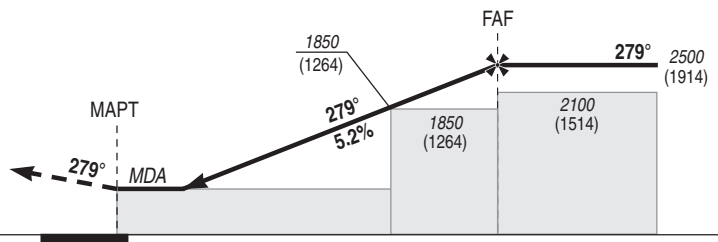
ATIS VATRY 136.380 APP : SEINE Approche/Approach 118.890 TWR : VATRY Tour/Tower 129.400 AFIS : VATRY Information 129.400 Absence ATS : A/A (129.400) FR seulement/only. Obtenir QNH ORLY sur ATIS ORLY : 126.505 (FR) / Obtain ORLY QNH on ATIS ORLY : 131.355 (EN)	VAR 2°E (2025)
---	----------------------



TA : 5000

API : Monter R 099 CAV (279°). A CAV, tourner à droite R 314 CAV (314°) pour intercepter 11 NM CAV et intégrer l'attente à 2500 (1914). Monter à 2000 (1414) avant d'accélérer en palier.

Missed APCH: Climb R 099 CAV (279°). At CAV, turn right R 314 CAV (314°) to intercept 11 NM CAV and join the holding at 2500 (1914). Climb to 2000 (1414) prior to level acceleration.



DTHR ← (NM)	0	3.8	5.9	
DME CAV ← (NM)	2.5	6.3	8.3	

MNM AD : distances verticales en pieds, RVR et VIS en mètres./Vertical distances in feet, RVR and VIS in metres. REF HGT : ALT AD

CAT	VOR+DME CAV			MVL/Circling ⁽¹⁾		MVL/Circling ⁽¹⁾ absence ATS, HJ seulement/only		DME CAV						
	MDA (H)	RVR	OCH	MDA (H)	VIS	MDA (H)	VIS	NM	4	5	6	7	8	
A	1000 (410)	1200	408	1120 (540)	1500	1460 (880)	1500	ALT	1120	1440	1760	2080	2400	
B				1140 (550)	1600	1480 (890)	1600	(HGT)	(534)	(854)	(1174)	(1494)	(1814)	
C				1260 (680)	2400	1600 (1020)	2400							
D				1290 (710)	3600	1630 (1050)	3600							

Observations /Remarks : (1) MVL CAT C interdites au sud de la piste si R 6 A active. MVL CAT D interdites au sud de la piste.
(1) Circling CAT C prohibited South of RWY if R 6 A active. Circling CAT D prohibited South of RWY.

FAF - MAPT	5.9 NM	70 kt 5 min 03	85 kt 4 min 10	100 kt 3 min 32	115 kt 3 min 05	130 kt 2 min 43	160 kt 2 min 13	185 kt 1 min 55
VSP (ft/min)	Non disponible / Not available							