

APPROCHE AUX INSTRUMENTS

CHALONS VATRY

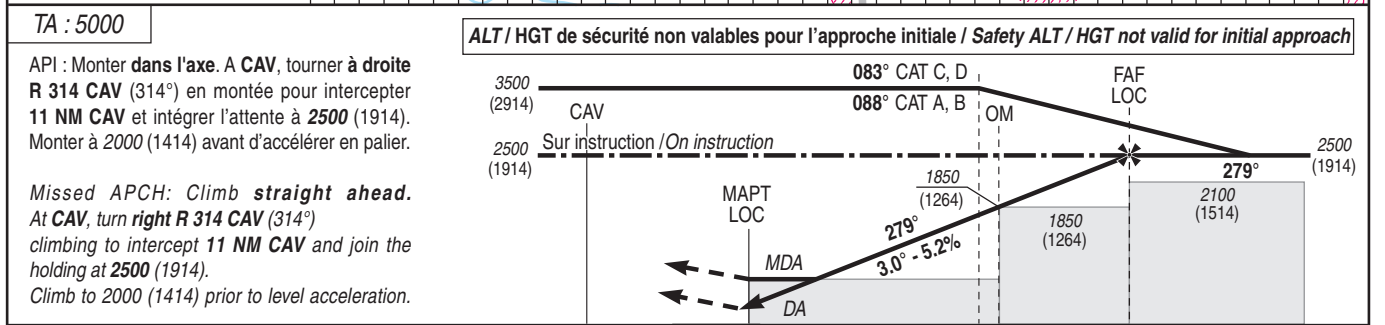
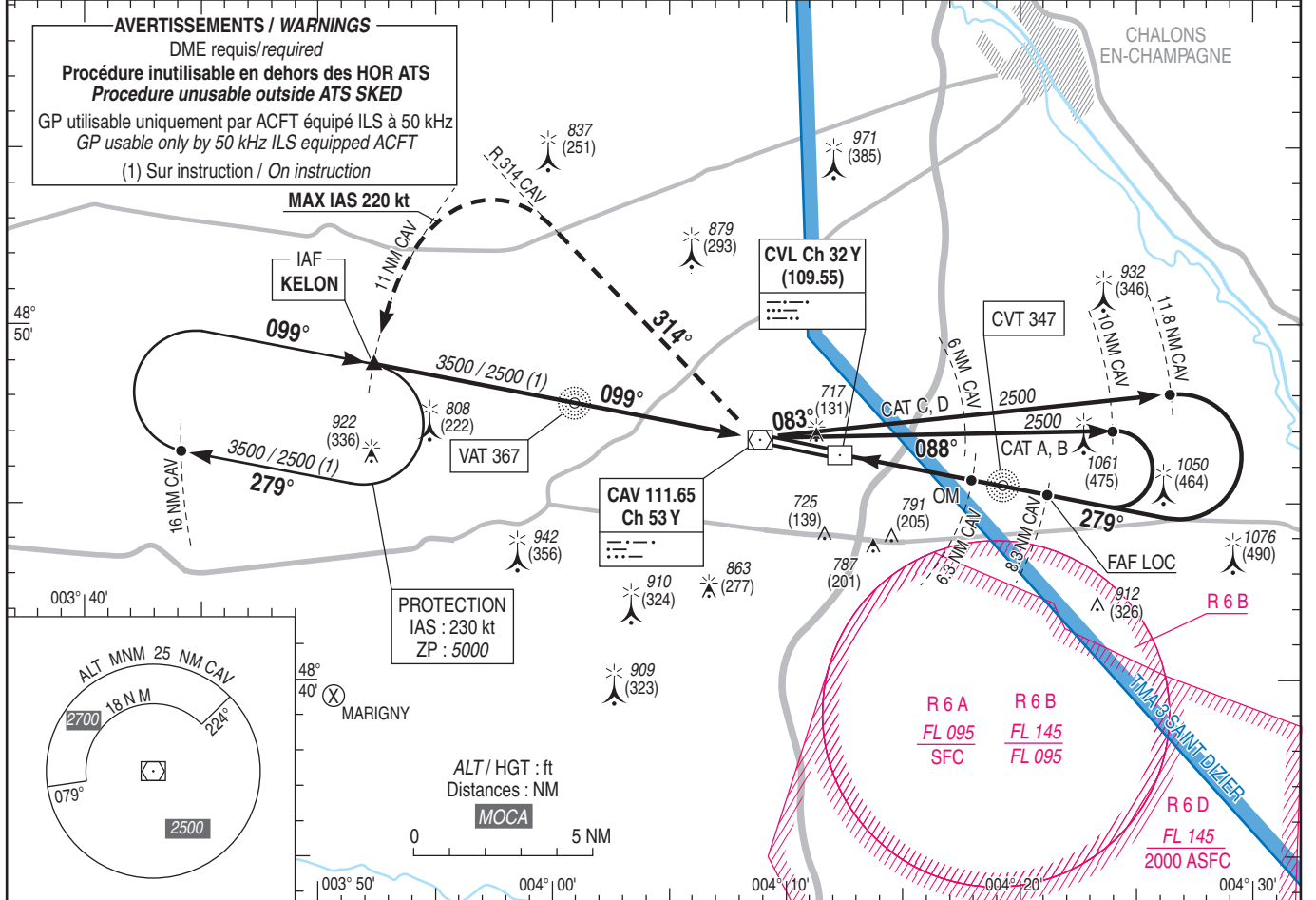
Instrument approach

CAT A B C D

ALT AD : 586, DTHR : 586 (22 hPa)

ILS ou/or LOC RWY 28

ATIS VATRY 136.380 APP : SEINE Approche/Approach 118.890 TWR : VATRY Tour/Tower 129.400 AFIS : VATRY Information 129.400	ILS - DME CVL 109.55 RDH : 49	VAR 2°E (2025)
---	---	-----------------------------



DTHR ← (NM)	2.5	0	3.8	5.9
DME CAV ← (NM)	0	2.5	6.3	8.3
DME CVL ← (NM)		0.2	4	6

MNM AD : distances verticales en pieds, RVR et VIS en mètres / vertical distances in feet, RVR and VIS in metres. REF HGT : ALT DTHR

CAT	ILS		OCH CAT 1 (2)	LOC+DME CAV			MVL / Circling (3)		DME CAV					
	DA (H)	RVR		MDA (H)	RVR	OCH	MDA (H)	VIS	NM	4	5	6	7	8
A	790 (200)		186				1120 (540)	1500	NM	4	5	6	7	8
B	790 (200)		195				1140 (550)	1600	ALT	1120	1440	1760	2080	2400
C	800 (210)	550	205	910 (320)	750	319	1260 (680)	2400	(HGT)	(534)	(854)	(1174)	(1494)	(1814)
D	810 (220)		219				1290 (710)	3600						
DL	820 (230)		221	-	-	-	-	-						

Observations / Remarks : Base OCH ILS : ACFT 665 (79)
(2) OCH ILS CAT C : calculée pour avion large / calculated for large ACFT.
(3) MVL CAT C interdites au Sud de la piste si R 6 A active / Circling CAT C prohibited South of RWY if R 6 A active.
MVL CAT D interdites au Sud de la piste / Circling CAT D prohibited South of RWY.

FAF - MAPT	5.9 NM	70 kt	5 min 03	85 kt	4 min 10	100 kt	3 min 32	115 kt	3 min 05	130 kt	2 min 43	160 kt	2 min 13	185 kt	1 min 55
OM - DTHR	3.8 NM		3 min 15		2 min 41		2 min 17		1 min 59		1 min 45		1 min 26		1 min 14
VSP (ft/min)															Non disponible / Not available