

APPROCHE AUX INSTRUMENTS

CHALONS VATRY

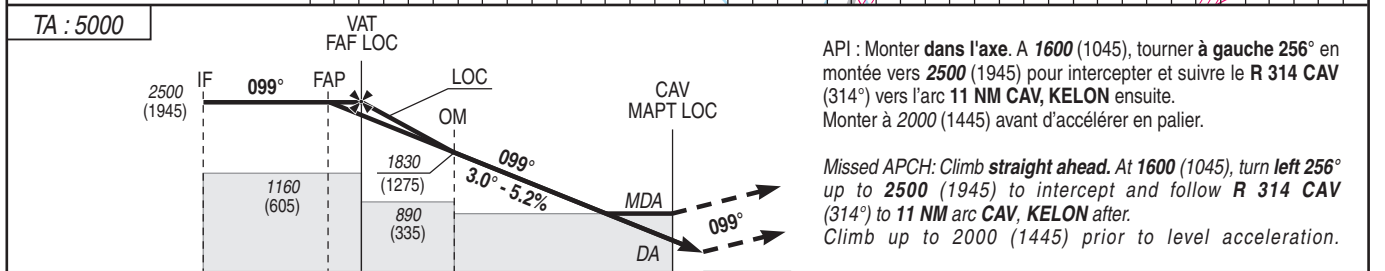
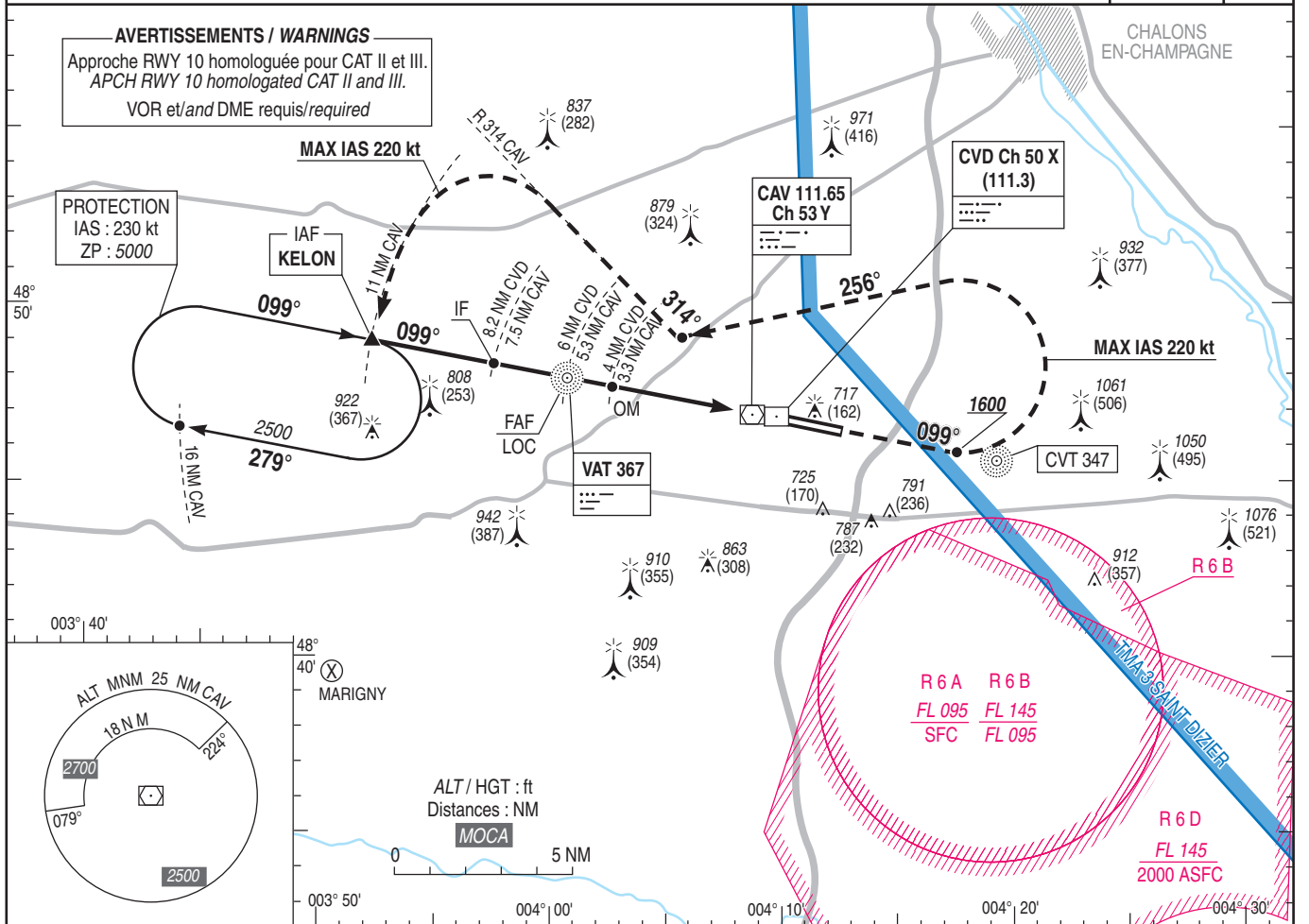
Instrument approach

CAT A B C D

ALT AD : 586, DTHR : 555 (21 hPa)

ILS Z CAT I ou/ou ILS Z CAT II et/and III ou/ou LOC Z RWY 10

ATIS VATRY 136.380 APP : SEINE Approche/Approach 118.890 TWR : VATRY Tour/Tower 129.400 AFIS : VATRY Information 129.400 Absence ATS : AIA (129.400) FR seulement/only. Obtenir QNH ORLY sur ATIS ORLY : 126.505 (FR) / Obtain ORLY QNH on ATIS ORLY: 131.355 (EN)	ILS - DME CVD 111.3 RDH : 49	VAR 2°E (2025)
--	---	----------------------



→ DTHR (NM)	8	6	5.8	3.8	0.5
→ CVD (NM)	8.2	6.2	6	4	0.7
→ CAV (NM)	7.5	5.5	5.3	3.3	0

MNM AD : distances verticales en pieds, RVR et VIS en mètres / vertical distances in feet, RVR and VIS in metres. REF HGT : ALT DTHR

CAT	ILS Z		LOC Z			MVL/Circling ⁽¹⁾		MVL/Circling ⁽¹⁾ absence ATS, HJ seulement/only		DME						
	DA (H)	RVR	OCH CAT 1 (2)	OCH CAT 2 (2)	MDA (H)	RVR	OCH	MDA (H)	VIS	MDA (H)	VIS	CAV NM ALT (HGT)	4 (HGT)	3 (HGT)	2 (HGT)	1 (HGT)
A			159	58				1120 (570)	1500	1460 (910)	1500	5 2360 (1805)	4 2040 (1485)	3 1720 (1165)	2 1410 (855)	1 1090 (535)
B			169	70				1140 (580)	1600	1480 (920)	1600	5 2150 (1595)	4 1830 (1275)	3 1510 (955)	2 1190 (635)	
C	760 (200)	550	171	81	880 (320)	750	320	1260 (710)	2400	1600 (1050)	2400					
D			184	99				1290 (740)	3600	1630 (1080)	3600					
DL			184	100												

Observations/Remarks : Base OCH ILS CAT A et B : NIL. OCH base ILS CAT A and B : NIL.
 (1) MVL CAT C interdites au sud de la piste en cas d'activation de la R 6 A. MVL CAT D interdites au sud de la piste.
 Circling CAT C prohibited South of RWY in case of R 6 A activation. Circling CAT D prohibited South of RWY.
 (2) OCH ILS 1et/and 2 CAT C calculée pour avion large/calculated for large ACFT.

FAF - MAPT	5.3 NM	70 kt	85 kt	100 kt	115 kt	130 kt	160 kt	185 kt
OM - DTHR	3.8 NM	4 min 33	3 min 44	3 min 11	2 min 46	2 min 27	1 min 59	1 min 43
VSP (ft/min)		3 min 15	2 min 41	2 min 17	1 min 59	1 min 45	1 min 26	1 min 14

Non disponible / Not available