

**APPROCHE AUX INSTRUMENTS**

Instrument approach

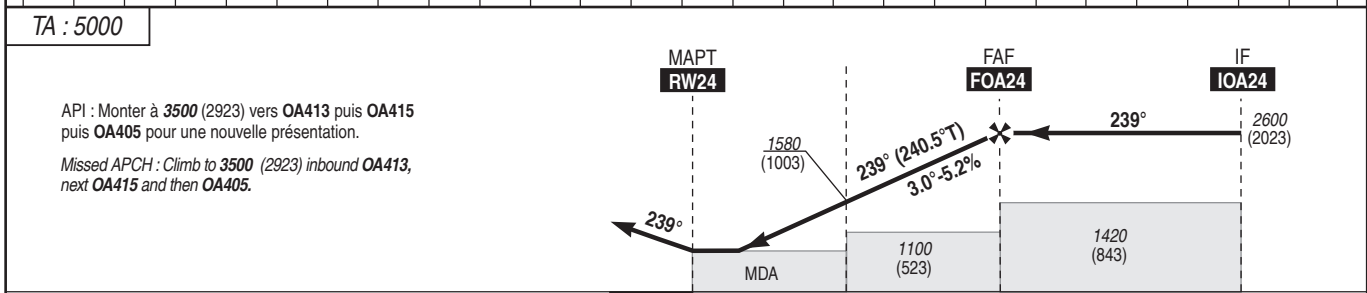
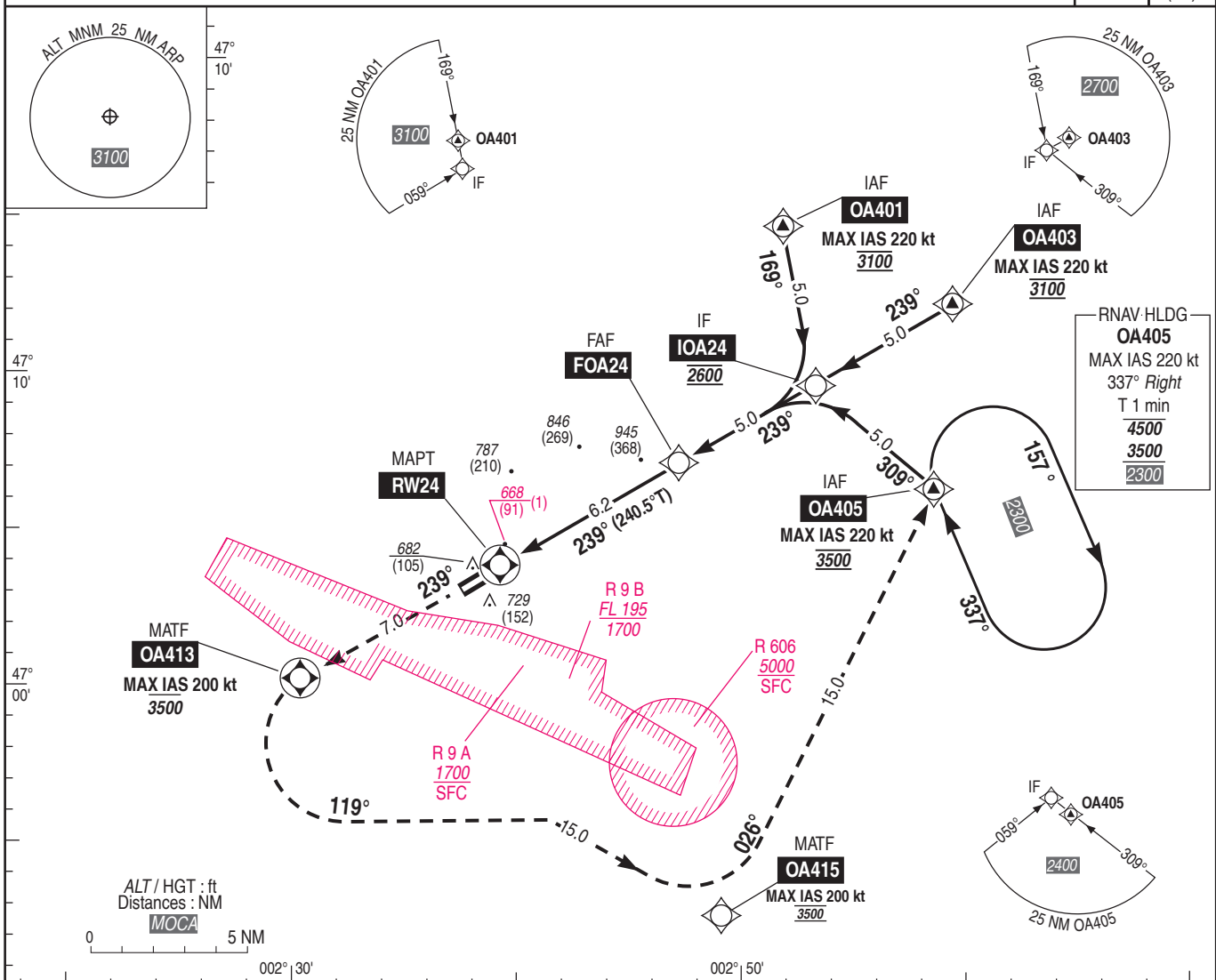
CAT A B C D

ALT AD : 578, THR : 577 (21 hPa)

**AVORD**

RNP RWY 24

|  |      |      |
|--|------|------|
| APP : AVORD Approche / Approach 119.700 373.775 (1)      | RNP  | VAR  |
| TWR : AVORD Tour / Tower 122.100 142.225 (1) 398.550 (1) | APCH | 1°E  |
| (1) Réserve MIL / Reserved MIL ACFT                      |      | (20) |



THR ← (NM)

Minimums standard : distances verticales en pieds, RVR et VIS en mètres. / Vertical distances in feet, RVR and VIS in meters. REF HGT : ALT THR

| CAT | LNAV      |     |     | MVL (2)    |      | DIST RW24 | 1     | 2     | 3      | 4      | 5      | 6      |
|-----|-----------|-----|-----|------------|------|-----------|-------|-------|--------|--------|--------|--------|
|     | MDA (H)   | RVR | OCH | MDA (H)    | RVR  |           |       |       |        |        |        |        |
| A   |           |     |     | 1030 (450) | 1500 | NM        | 950   | 1260  | 1580   | 1900   | 2220   | 2540   |
| B   | 930 (360) | 900 | 352 | 1090 (510) | 1600 | ALT       | (373) | (683) | (1003) | (1323) | (1643) | (1963) |
| C   |           |     |     | 1250 (670) | 2400 | (HGT)     |       |       |        |        |        |        |
| D   |           |     |     | 1340 (770) | 3600 |           |       |       |        |        |        |        |

Observations/Remarks : (1) VSS Percée / VSS crossed. (2) HJ seulement / Day only

|              |        |          |          |          |          |          |          |          |
|--------------|--------|----------|----------|----------|----------|----------|----------|----------|
| FAF - MAPT   | 6.2 NM | 70 kt    | 85 kt    | 100 kt   | 115 kt   | 130 kt   | 160 kt   | 185 kt   |
|              |        | 5 min 19 | 4 min 23 | 3 min 43 | 3 min 14 | 2 min 52 | 2 min 20 | 2 min 01 |
| VSP (ft/min) |        | 370      | 450      | 530      | 610      | 690      | 850      | 980      |