

APPROCHE AUX INSTRUMENTS

BEZIERS VIAS

Instrument approach

CAT A B C

ALT AD : 56, THR : 41 (2 hPa)

NDB RWY 27

ATIS BEZIERS : 127.530

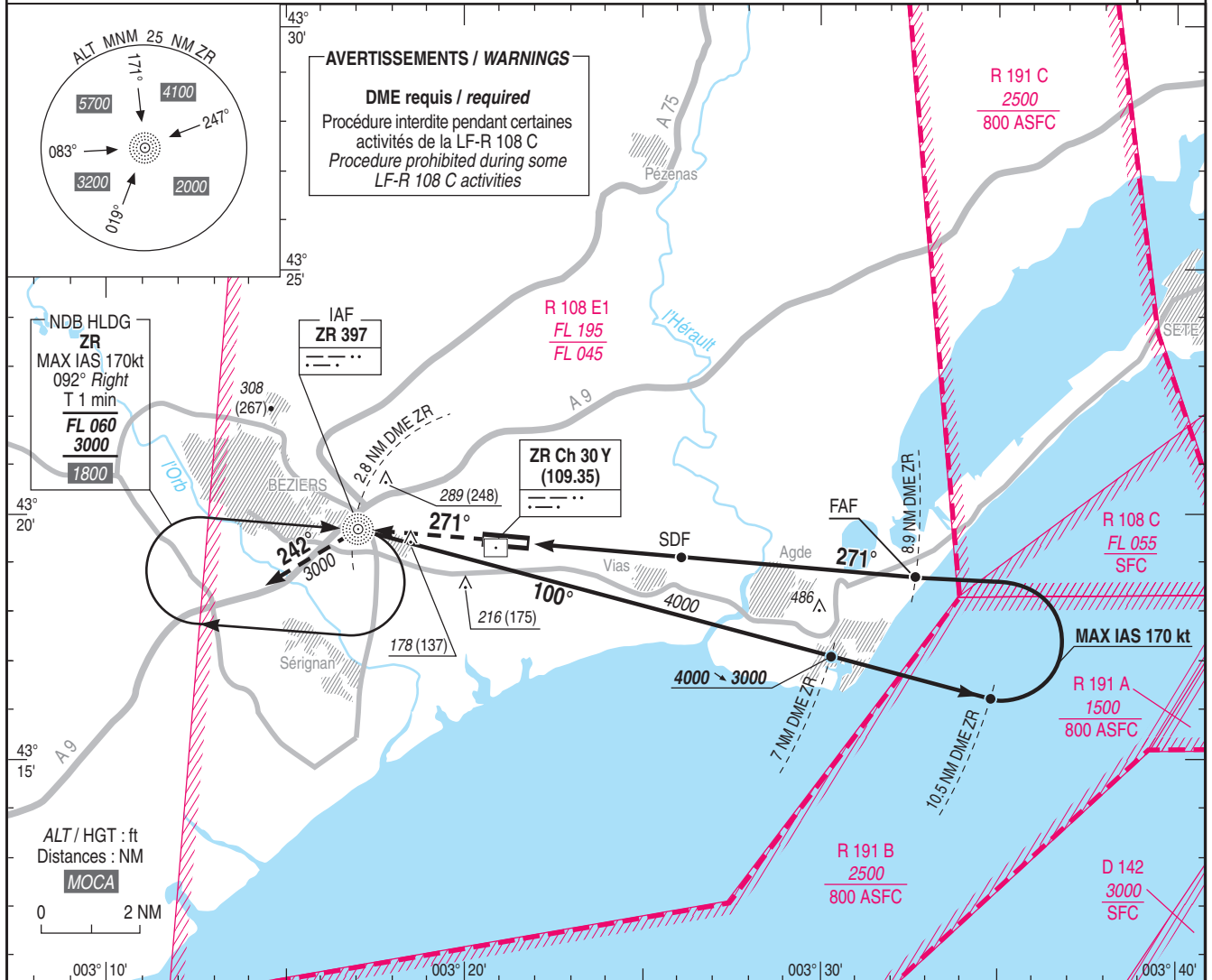
APP : MONTPELLIER Approche/Approach : Voir/See AD 2 LFMT COM 01

TWR : BEZIERS Tour/Tower : Voir/See AD 2 LFMU COM 01 (1)

(1) Absence ATS : A/A en FR seulement, obtenir QNH local sur STAP.

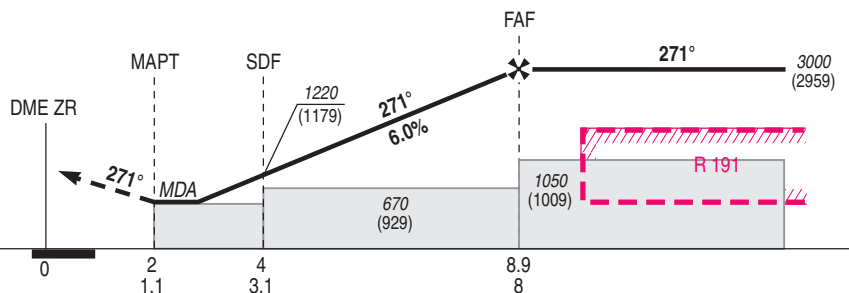
A/A FR only, obtain local QNH from STAP.

VAR
2°E
(2025)



TA : 5000

API : Monter au R 271 ZR
vers 3000 (2959) et intégrer l'attente.
Missed APCH : Climb R 271 ZR
up to 3000 (2959) and join holding.



→ DME ZR (NM)
→ THR (NM)

MMN AD : distances verticales en pieds, RVR et VIS en mètres / vertical distances in feet, RVR and VIS in metres.

REF HGT : ALT THR

CAT	NDB+DME ZR			MVL / Circling ⁽³⁾		DME ZR					
	MDA (H)	RVR	OCH (2)	MDA (H)	VIS	8 NM	7	6	5	4	3
A		1500		700 (660)	1500	ALT 2680 (HGT 2639)	2310 (2269)	1950 (1909)	1580 (1539)	1220 (1179)	850 (809)
B	590 (550)	1500	545	710 (670)	1600						
C		2400		870 (830)	2400						

Observations / Remarks : (2) OCH de construction / Construction OCH.

(3) MVL CAT B et C interdites au Sud de la piste / MVL CAT B and C prohibited South of RWY.

	70 kt	85 kt	100 kt	115 kt	130 kt	145 kt	160 kt
VSP (ft/min)	430	520	610	700	790	880	970