

**APPROCHE AUX INSTRUMENTS**

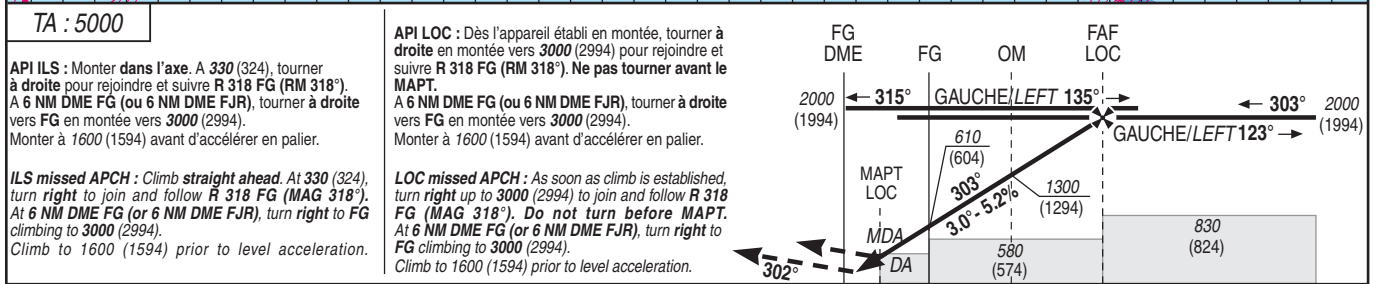
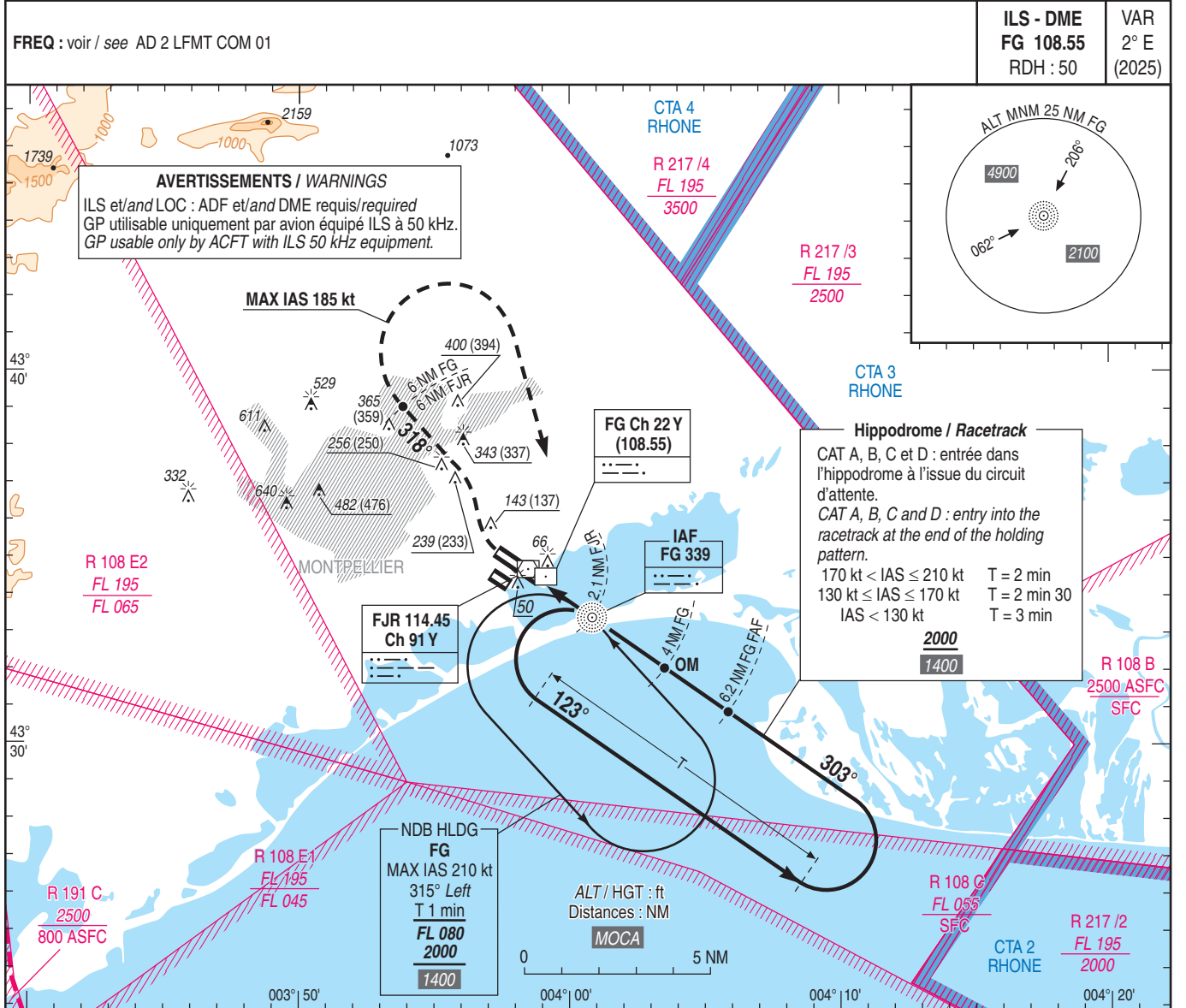
**MONTPELLIER MEDITERRANEE**

Instrument approach

CAT A B C D

ALT AD : 17, THR : 6 (1 hPa)

ILS Y ou/ or LOC Y RWY 30R



DME FG ← (NM)  
DME FJR ← (NM)

MNM AD : distances verticales en pieds, RVR et VIS en mètres / vertical distances in feet, RVR and VIS in metres. REF HGT : ALT THR

CAT	ILS Y			LOC Y (2)			MVL / Circling (1)			DME FG NM ALT (HGT)	DME FJR NM ALT (HGT)		
	DA (H)	RVR	OCH	MDA (H)	RVR	OCH	MDA (H)	VIS	OCH				
A	210 (200)	750	191	330 (320)	1000	319	630 (620)	1500	618	6	1950 (1944)		
B	220 (210)	750	202				630 (630)	1600	624	5	1620 (1614)	5	1620 (1614)
C	220 (210)	750	210				830 (820)	2400	818	4	1300 (1294)	4	1200 (1194)
D	230 (220)	800	220				850 (850)	3600	843	3	970 (964)	3	870 (864)
										2	650 (644)		
										2	550 (544)		

Observations / Remarks : (1) MVL interdites au Sud-Ouest des pistes / Circling prohibited South-West of RWY.  
(2) Base OCH LOC : NIL (position MAPT) / OCH base LOC : NIL (MAPT position).

FAF - MAPT	5.3 NM	70 kt 4 min 31	85 kt 3 min 43	100 kt 3 min 10	115 kt 2 min 45	130 kt 2 min 26	145 kt 2 min 11	160 kt 1 min 59	185 kt 1 min 43
VSP (ft/min)		370	450	530	610	685	765	845	980