

**APPROCHE AUX INSTRUMENTS**

**MONTPELLIER MEDITERRANEE**

Instrument approach

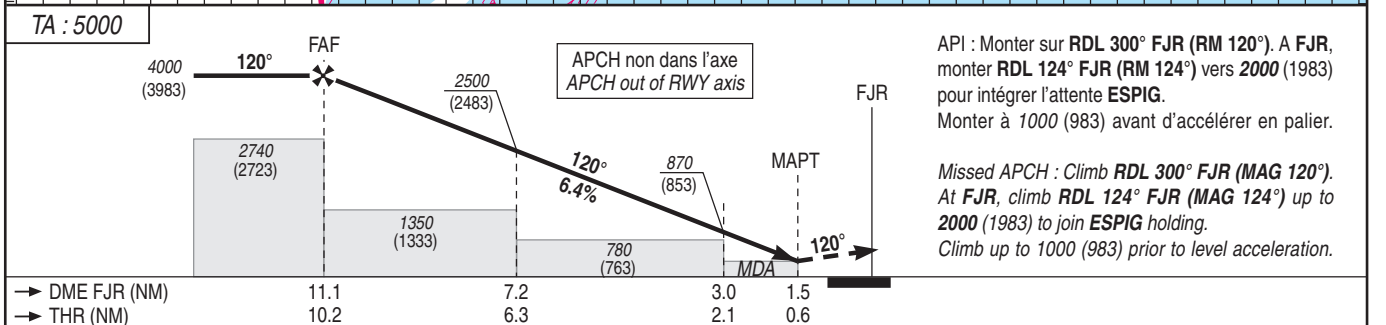
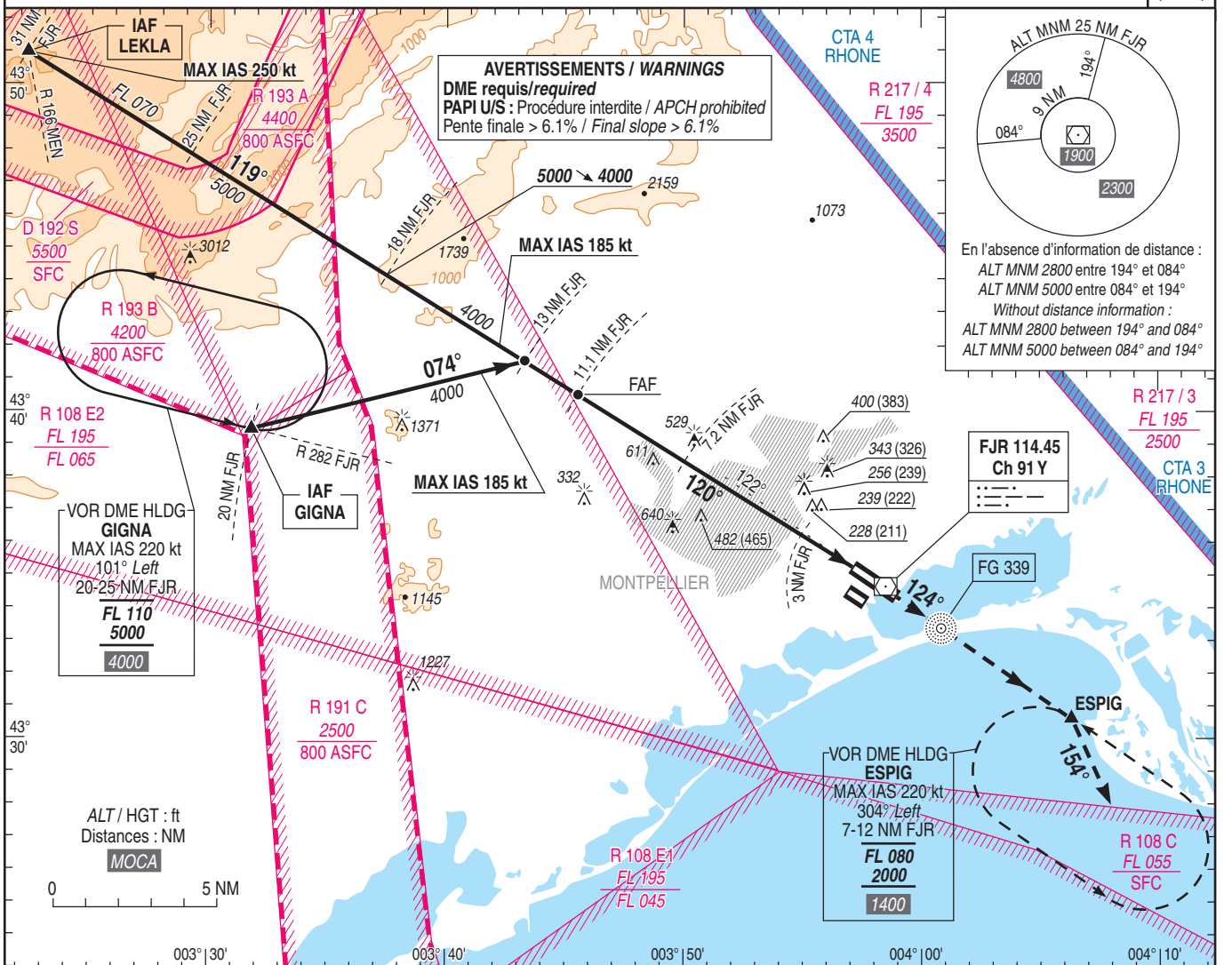
CAT A B C D

ALT AD : 17 (1 hPa), THR : 17

VOR Z RWY 12L

FREQ : voir / see AD 2 LFMT COM 01

VAR  
2° E  
(2025)



API : Monter sur RDL 300° FJR (RM 120°). A FJR, monter RDL 124° FJR (RM 124°) vers 2000 (1983) pour intégrer l'attente ESPIG.  
Monter à 1000 (983) avant d'accélérer en palier.

Missed APCH : Climb RDL 300° FJR (MAG 120°). At FJR, climb RDL 124° FJR (MAG 124°) up to 2000 (1983) to join ESPIG holding.  
Climb up to 1000 (983) prior to level acceleration.

MNM AD : distances verticales en pieds, RVR et VIS en mètres / vertical distances in feet, RVR and VIS in metres. REF HGT : ALT AD

CAT	VOR Z			MVL / Circling (1)			DME FJR								
	MDA (H)	RVR	OCH	MDA (H)	VIS	OCH	NM	10	9	8	7	6	5	4	3
A	480 (460)	1500	457	630 (610)	1500	607	ALT	3590	3200	2810	2420	2030	1640	1250	870
B	480 (460)	1500	457	630 (620)	1600	613	(HGT)	(3573)	(3183)	(2793)	(2403)	(2013)	(1623)	(1233)	(853)
C	830 (810)	2400	807	830 (810)	2400	807									
D	850 (840)	2400	832	850 (840)	3600	832									

Observations / Remarks : (1) MVL interdites au Sud-Ouest des pistes.  
(1) Circling prohibited South-West of RWY.

	70 kt	85 kt	100 kt	115 kt	130 kt	160 kt	185 kt
VSP (ft/min)	450	550	650	750	840	1040	1200

