

**APPROCHE AUX INSTRUMENTS**

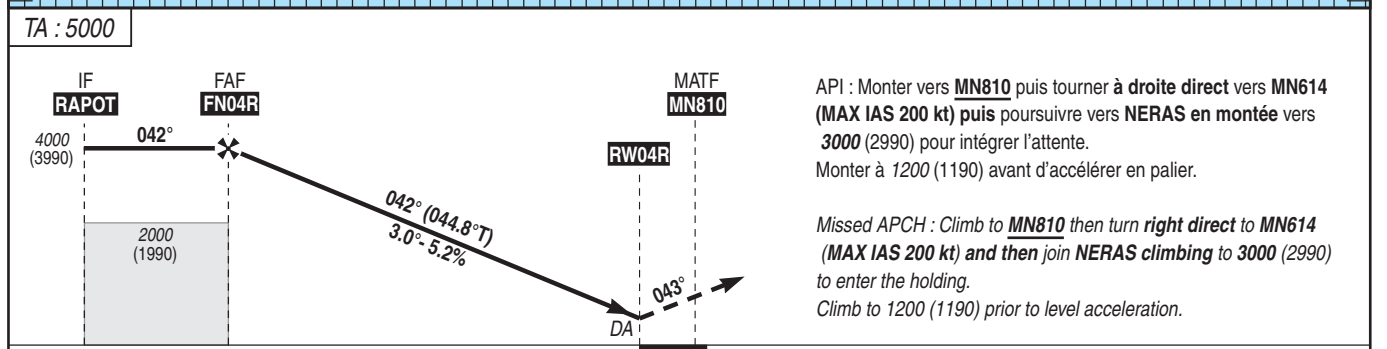
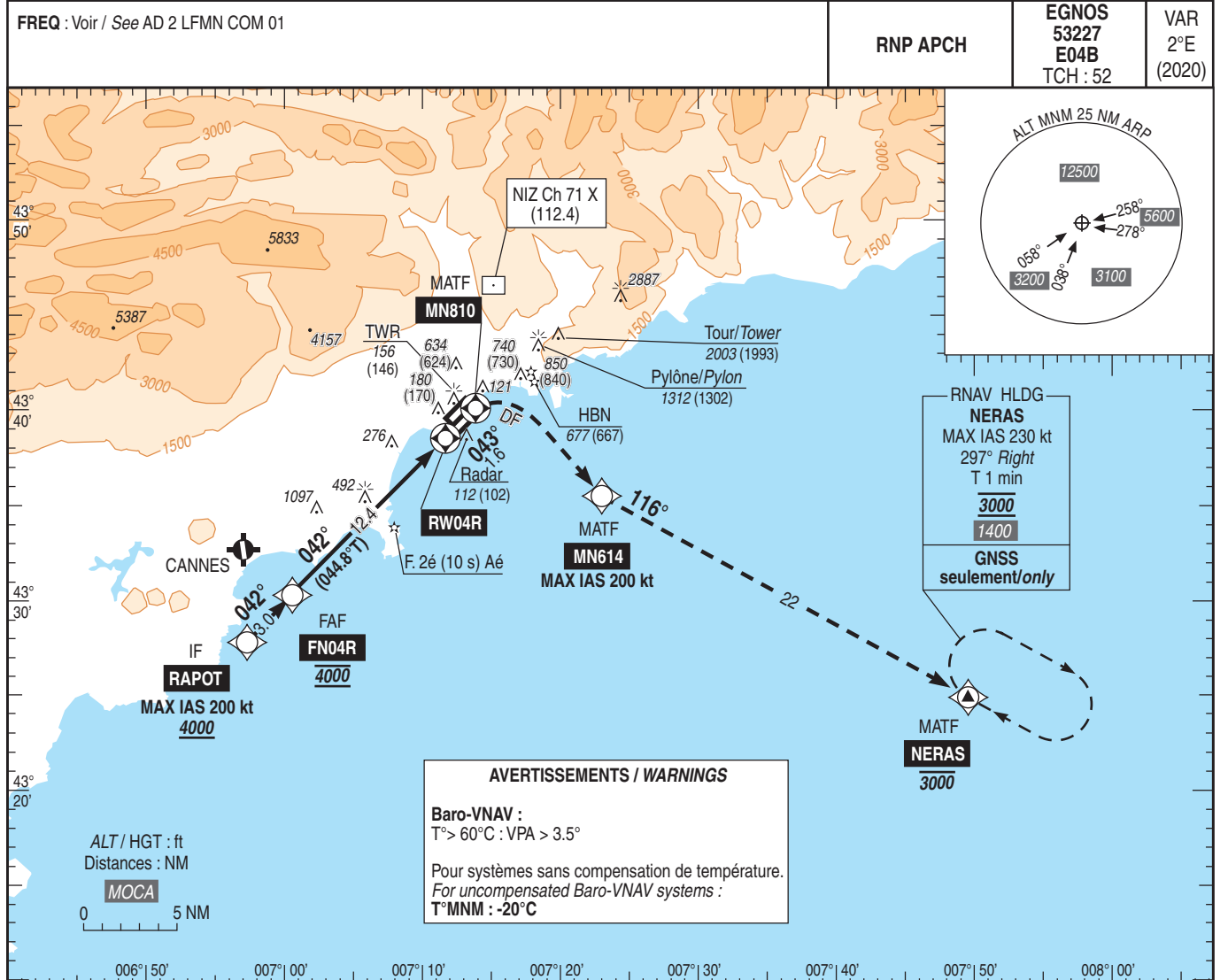
**NICE COTE D'AZUR**

Instrument approach

CAT A B C D

ALT AD : 12, THR : 10 (1 hPa)

FNA RNP Z RWY 04R (LPV, LNAV/VNAV ONLY)



MNM AD : distances verticales en pieds, RVR et VIS en mètres / vertical distances in feet, RVR and VIS in metres. REF HGT : ALT THR

CAT	LPV API 2.5%			LPV API 3%			LNAV-VNAV (2) API 2.5%			MVL / Circling (1)	
	DA (H)	RVR	OCH	DA (H)	RVR	OCH	DA (H)	RVR	OCH	MDA (H)	VIS
A	220 (210)	1200	202	210 (200)		179	560 (550)	1500	548	770 (760)	3500
B	230 (220)	1200	215	210 (200)		191	570 (560)	1500	560	770 (760)	3500
C	290 (280)	1300	279	210 (200)	1200	199	590 (580)	2400	580	1700 (1690)	5000
D	300 (290)	1400	290	220 (210)		209	620 (610)	2400	607	2420 (2410)	5000

Observations/Remarks : (1) MVL interdites au Nord-Ouest des pistes / Circling prohibited North-West of RWY  
Panne de guidage GNSS lors de l'approche / Loss of GNSS guidance during approach : voir/see AIP ENR 1.5  
(2) Pour minimums particuliers/ For special minima, voir/see AD 2 LFMN IAC RWY04R FNA RNP Z MINIMA

FAF - THR (NM)	12.4	70 kt	85 kt	100 kt	115 kt	130 kt	145 kt	160 kt	185 kt
		10 min 36	8 min 44	7 min 25	6 min 27	5 min 43	5 min 07	4 min 38	4 min 01
VSP (ft/min)		370	450	530	610	685	765	845	980