

**APPROCHE AUX INSTRUMENTS**

**NICE COTE D'AZUR**

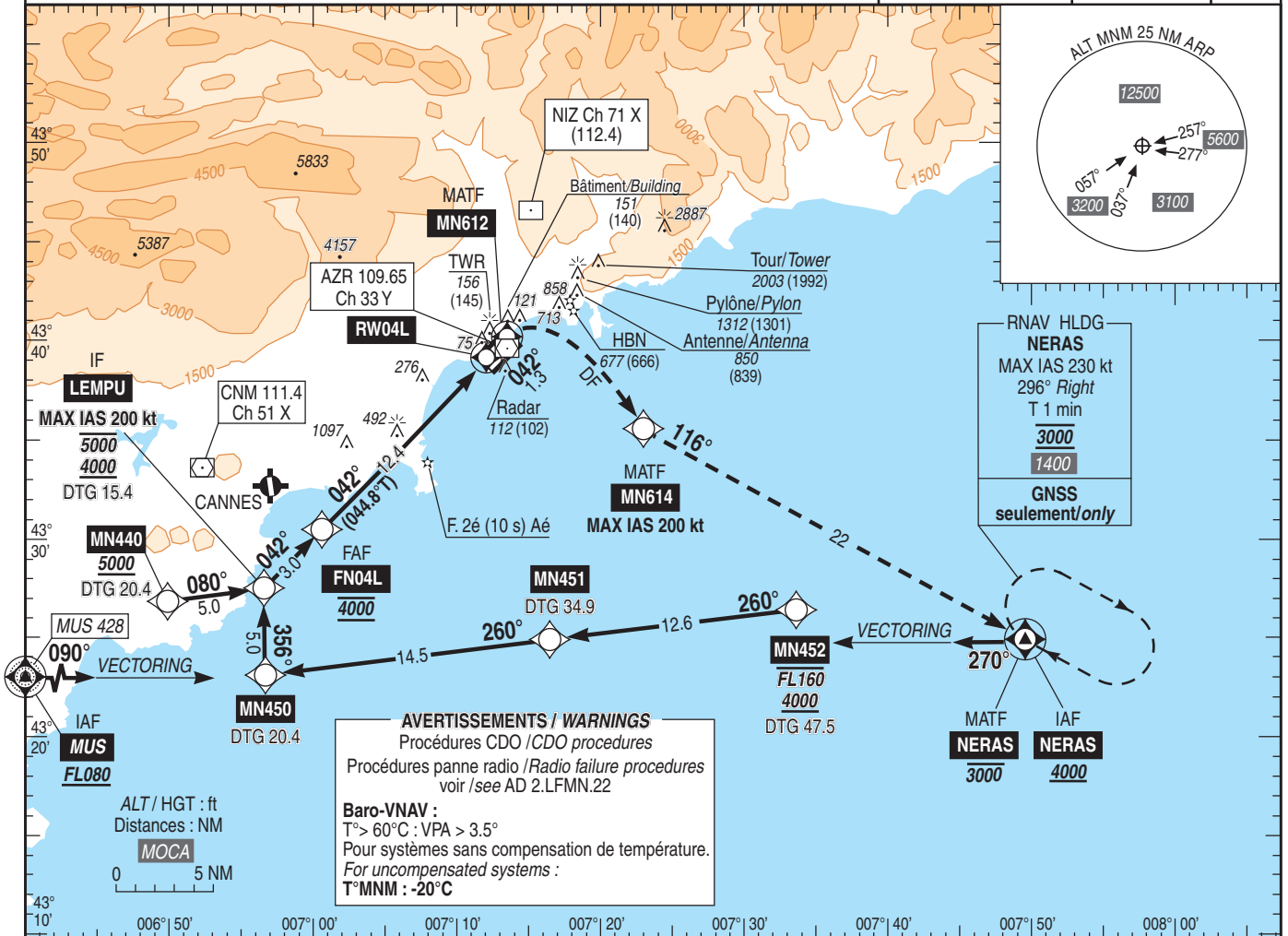
Instrument approach

CAT A B C D

ALT AD : 12, DTNR : 11 (1 hPa)

**RNP Z RWY 04L (LPV, LNAV/VNAV ONLY)**

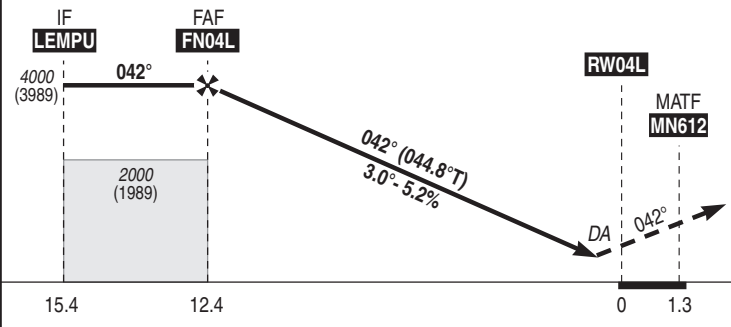
FREQ : Voir / See AD 2 LFMN COM 01	RNP APCH	EGNOS 50045 E04A TCH : 49	VAR 3°E (2025)
------------------------------------	----------	------------------------------------	----------------------



**AVERTISSEMENTS / WARNINGS**  
Procédures CDO / CDO procedures  
Procédures panne radio / Radio failure procedures  
voir / see AD 2.LFMN.22

**Baro-VNAV :**  
T° > 60°C : VPA > 3.5°  
Pour systèmes sans compensation de température.  
For uncompensated systems :  
T°MNM : -20°C

TA : 5000



Missed APCH: Climb to **MN612**, then turn **right direct** to **MN614 (MAX IAS 200 kt)** and then join **NERAS** climbing at **3000 (2989) MAX** to enter the holding. Climb to 1200 (1189) prior to level acceleration.

MNM AD : distances verticales en pieds, RVR et VIS en mètres / vertical distances in feet, RVR and VIS in metres. REF HGT : ALT DTNR

CAT	LPV (2)			LNAV-VNAV (2)			MVL / Circling (1)	
	DA (H)	RVR	OCH	DA (H)	RVR	OCH	MDA (H)	VIS
A	250 (240)	1200	231	600 (590)	1500	582	770 (760)	3500
B	260 (250)	1300	241	610 (600)	1500	594	770 (760)	3500
C	390 (380)	1700	378	630 (620)	2400	614	1700 (1690)	5000
D	400 (390)	1800	388	660 (650)	2400	641	2420 (2410)	5000

Observations / Remarks : (1) MVL interdites au Nord-Ouest des pistes / Circling prohibited North-West of RWY  
(2) Pour minimums particuliers / for special minima, voir / see IAC RWY04L RNP Z MINIMA.  
PAPI RWY04L : portée limitée à 7000 m / scope limited to 7000 m.  
Panne de guidage GNSS lors de l'approche / Loss of GNSS guidance during approach : voir / see AIP ENR 1.5

FAF - DTNR	12.4 NM	70 kt	85 kt	100 kt	115 kt	130 kt	145 kt	160 kt	185 kt
VSP (ft/min)		370	450	530	610	685	765	845	980