

APPROCHE AUX INSTRUMENTS

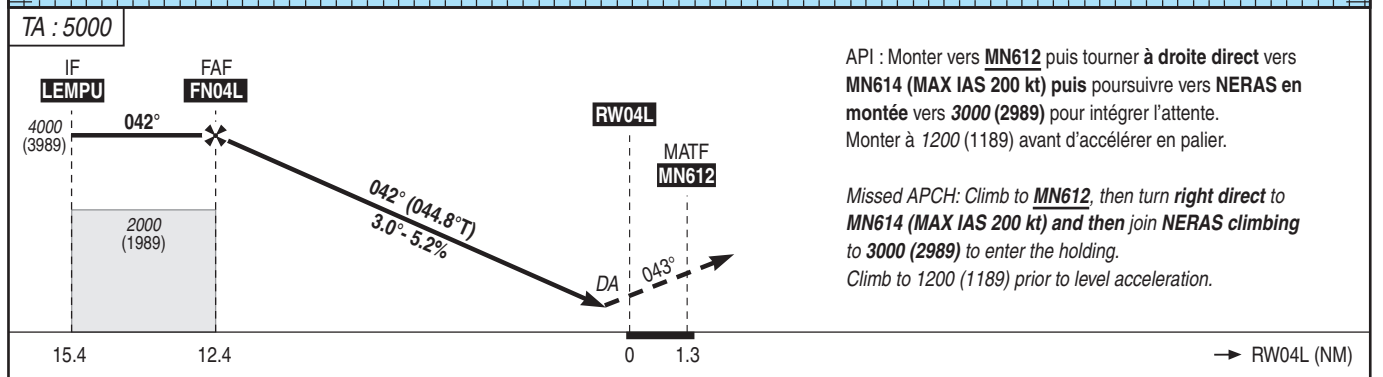
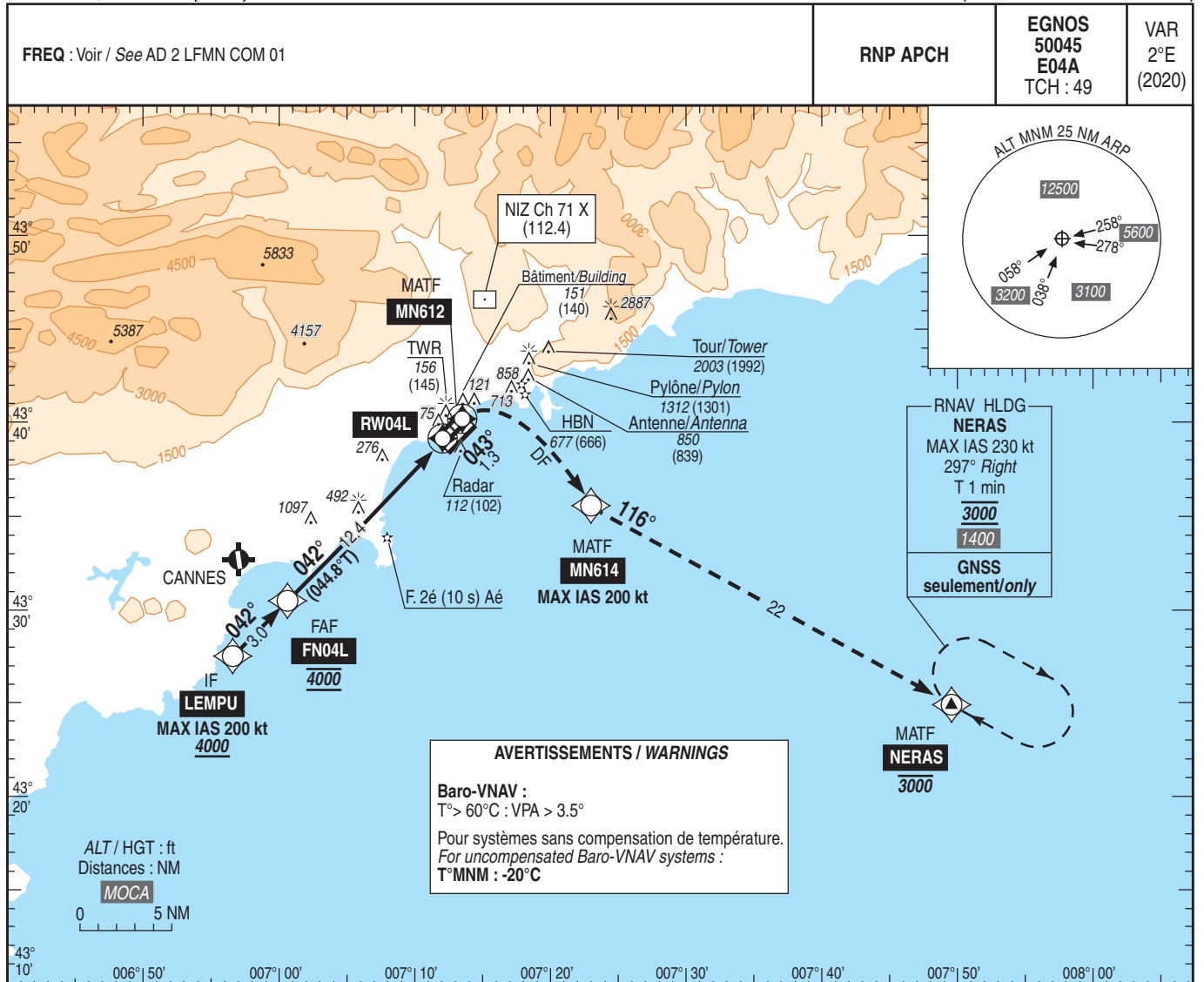
NICE COTE D'AZUR

Instrument approach

CAT A B C D

ALT AD : 12, DTDR : 11 (1 hPa)

FNA RNP Z RWY 04L (LPV, LNAV/VNAV ONLY)



MNM AD : distances verticales en pieds, RVR et VIS en mètres / vertical distances in feet, RVR and VIS in metres. REF HGT : ALT DTDR

CAT	LPV (2)			LNAV-VNAV (2)			MVL / Circling (1)	
	DA (H)	RVR	OCH	DA (H)	RVR	OCH	MDA (H)	VIS
A	250 (240)	1200	231	600 (590)	1500	582	770 (760)	3500
B	260 (250)	1300	241	610 (600)	1500	594	770 (760)	3500
C	390 (380)	1700	378	630 (620)	2400	614	1700 (1690)	5000
D	400 (390)	1800	388	660 (650)	2400	641	2420 (2410)	5000

Observations / Remarks : (1) MVL interdites au Nord-Ouest des pistes / Circling prohibited North-West of RWY
(2) Pour minimums particuliers, voir IAC RWY04L FNA RNP Z MINIMA. / For special minima, see IAC RWY04L FNA RNP Z MINIMA.
PAPI RWY04L : portée limitée à 7000 m / scope limited to 7000 m.
Panne de guidage GNSS lors de l'approche / Loss of GNSS guidance during approach : voir /see AIP ENR 1.5

FAF - DTDR	12.4 NM	70 kt	85 kt	100 kt	115 kt	130 kt	145 kt	160 kt	185 kt
VSP (ft/min)		10 min 36	8 min 44	7 min 25	6 min 27	5 min 43	5 min 07	4 min 38	4 min 01
		370	450	530	610	685	765	845	980