

**APPROCHE AUX INSTRUMENTS**

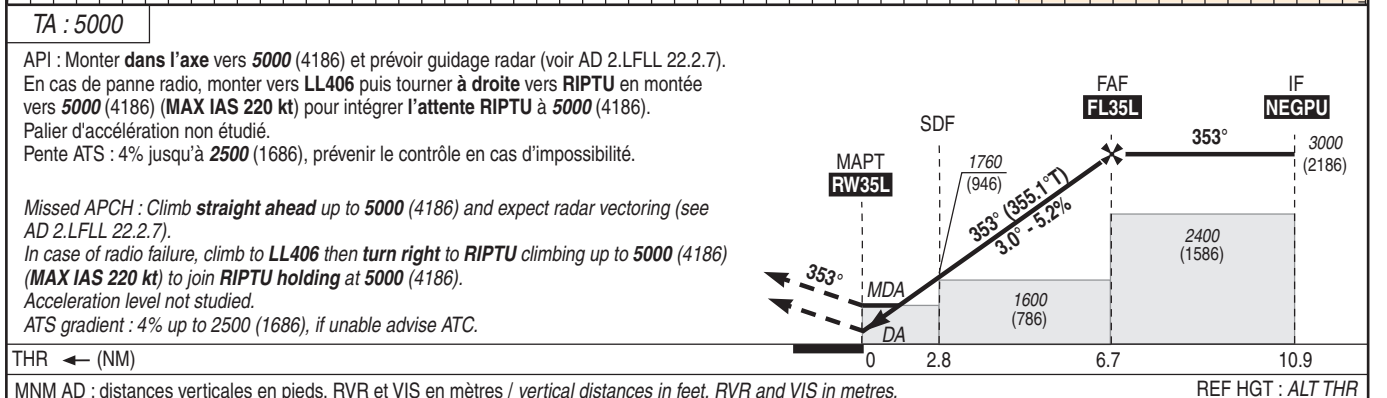
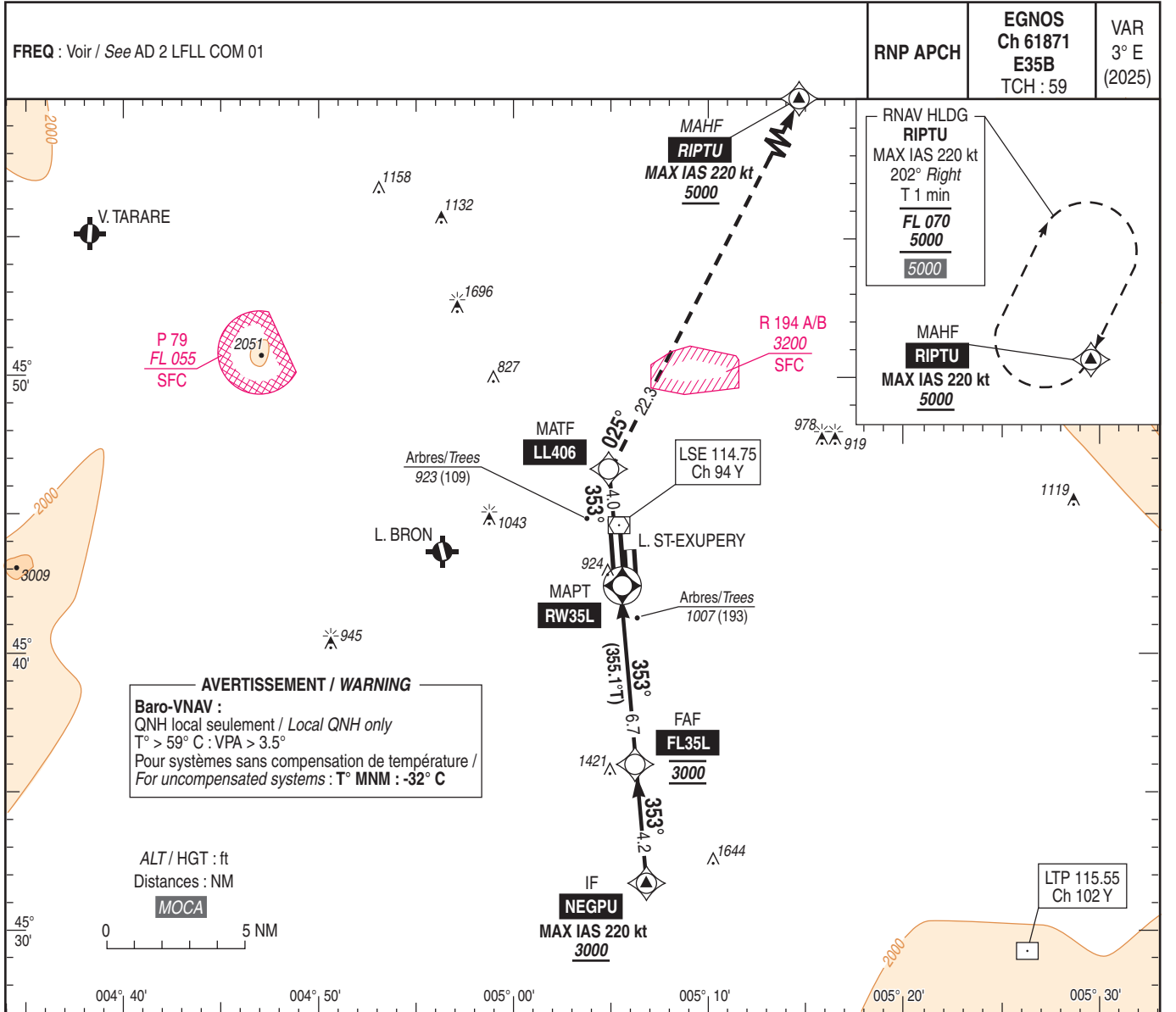
**LYON SAINT EXUPERY**

Instrument approach

CAT A B C D

ALT AD : 821, THR : 814 (30 hPa)

FNA RNP RWY 35L



THR ← (NM) REF HGT : ALT THR

MNM AD : distances verticales en pieds, RVR et VIS en mètres / vertical distances in feet, RVR and VIS in metres.

CAT	LPV			LNAV/VNAV			LNAV			MVL/Circling		DIST RW35L NM ALT (HGT)		
	DA (H)	RVR	OCH	DA (H)	RVR	OCH	MDA (H)	RVR	OCH	MDA (H)	VIS			
A			141	1240 (420)	1200	313				1300 (480)	1500	2 1510 (696) 3 1830 (1016) 4 2145 (1331) 5 2465 (1651) 6 2785 (1971)		
B	1020 (200)	550	151	1250 (430)	1300	325	1250 (430)	1300	429	1410 (590)	1600			
C			166	1250 (430)	1300	333				1680 (870)	2400			
D			179	1250 (430)	1300	343				1710 (900)	3600			
FAF - MAPT		6.7 NM		70 kt 5 min 45		85 kt 4 min 44		100 kt 4 min 01		115 kt 3 min 30		130 kt 3 min 06	160 kt 2 min 31	185 kt 2 min 10
VSP (ft/min)				370		450		525		605		685	845	975