

APPROCHE AUX INSTRUMENTS

LYON SAINT EXUPERY

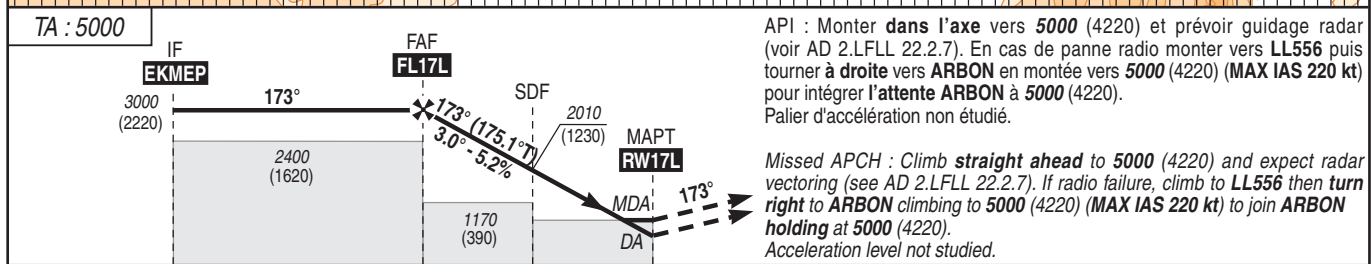
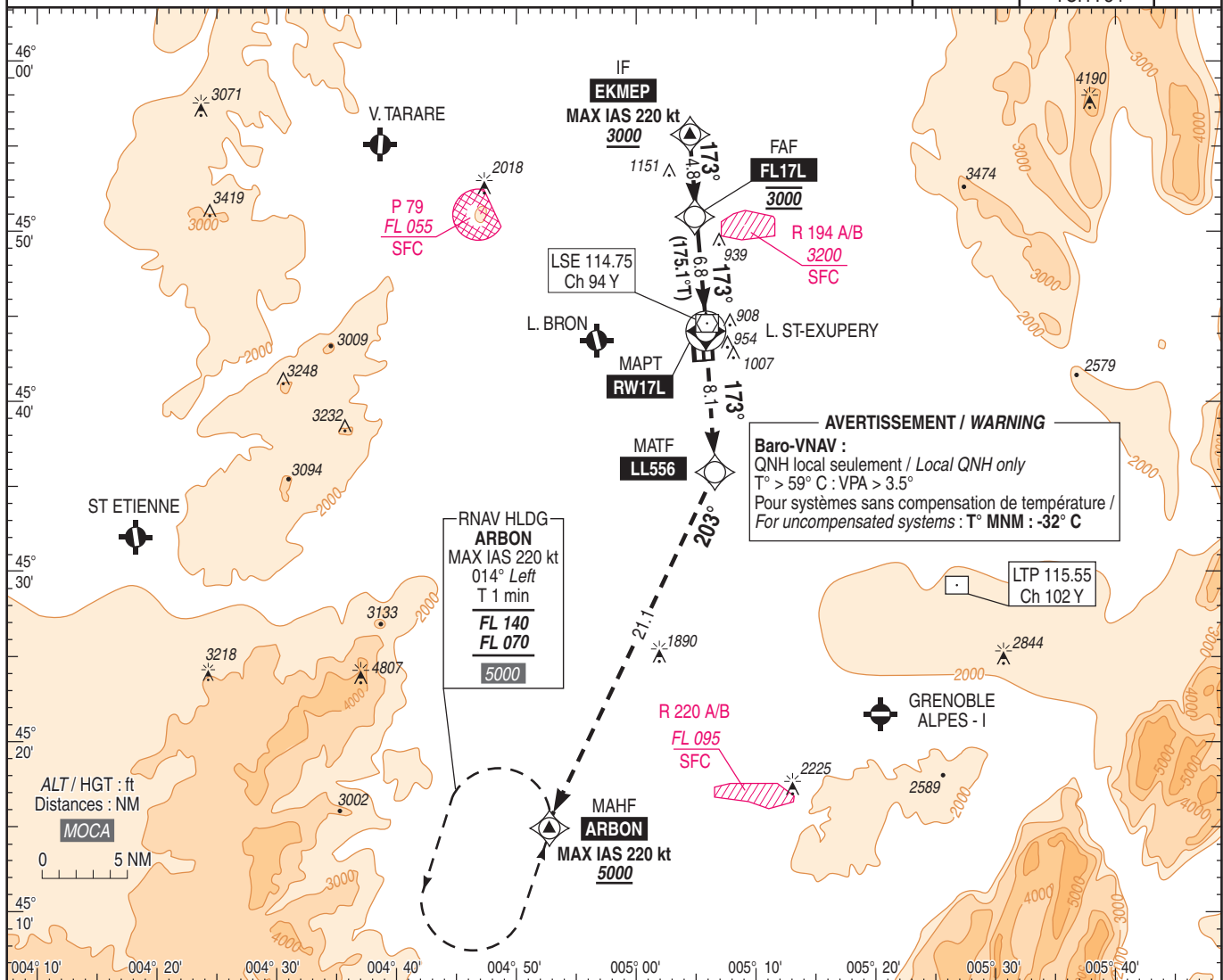
Instrument approach

CAT A B C D

ALT AD : 821, THR : 780 (29 hPa)

FNA RNP RWY 17L

FREQ : Voir / See AD 2 LFLI COM 01	RNP APCH	EGNOS Ch 53864 E17B TCH : 54	VAR 3° E (2025)
------------------------------------	----------	---------------------------------------	-----------------------



MNM AD : distances verticales en pieds, RVR et VIS en mètres / vertical distances in feet, RVR and VIS in metres. REF HGT : ALT THR

CAT	LPV			LNAV/VNAV			LNAV			MVL/Circling ⁽¹⁾		DIST RW17L NM ALT (HGT)
	DA (H)	RVR	OCH	DA (H)	RVR	OCH	MDA (H)	RVR	OCH	MDA (H)	VIS	
A			143	1130 (350)	900	242	1140 (360)		354	1300 (520)	1500	6
B	980 (200)	550	152	1140 (360)	900	253	1140 (360)	1000	354	1410 (630)	1600	5
C			169	1150 (370)	1000	261	1150 (370)		365	1690 (910)	2400	4
D			183	1150 (370)	1000	286	1150 (370)		365	1720 (940)	3600	3
												2

Observations/Remarks : (1) Circuit main droite RWY 35 / Right hand circuit RWY 35.
Panne de guidage durant l'approche / GNSS guidance loss during approach : voir / see AIP ENR 1.5.

FAF - MAPT	6.8 NM	70 kt 5 min 50	85 kt 4 min 48	100 kt 4 min 05	115 kt 3 min 33	130 kt 3 min 08	160 kt 2 min 33	185 kt 2 min 12
VSP (ft/min)		370	450	525	605	685	845	975