

**APPROCHE AUX INSTRUMENTS**

**VILLEFRANCHE TARARE**

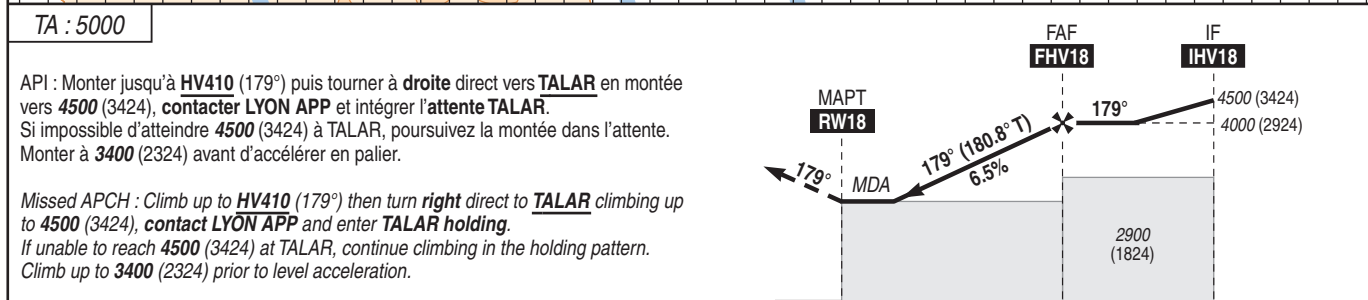
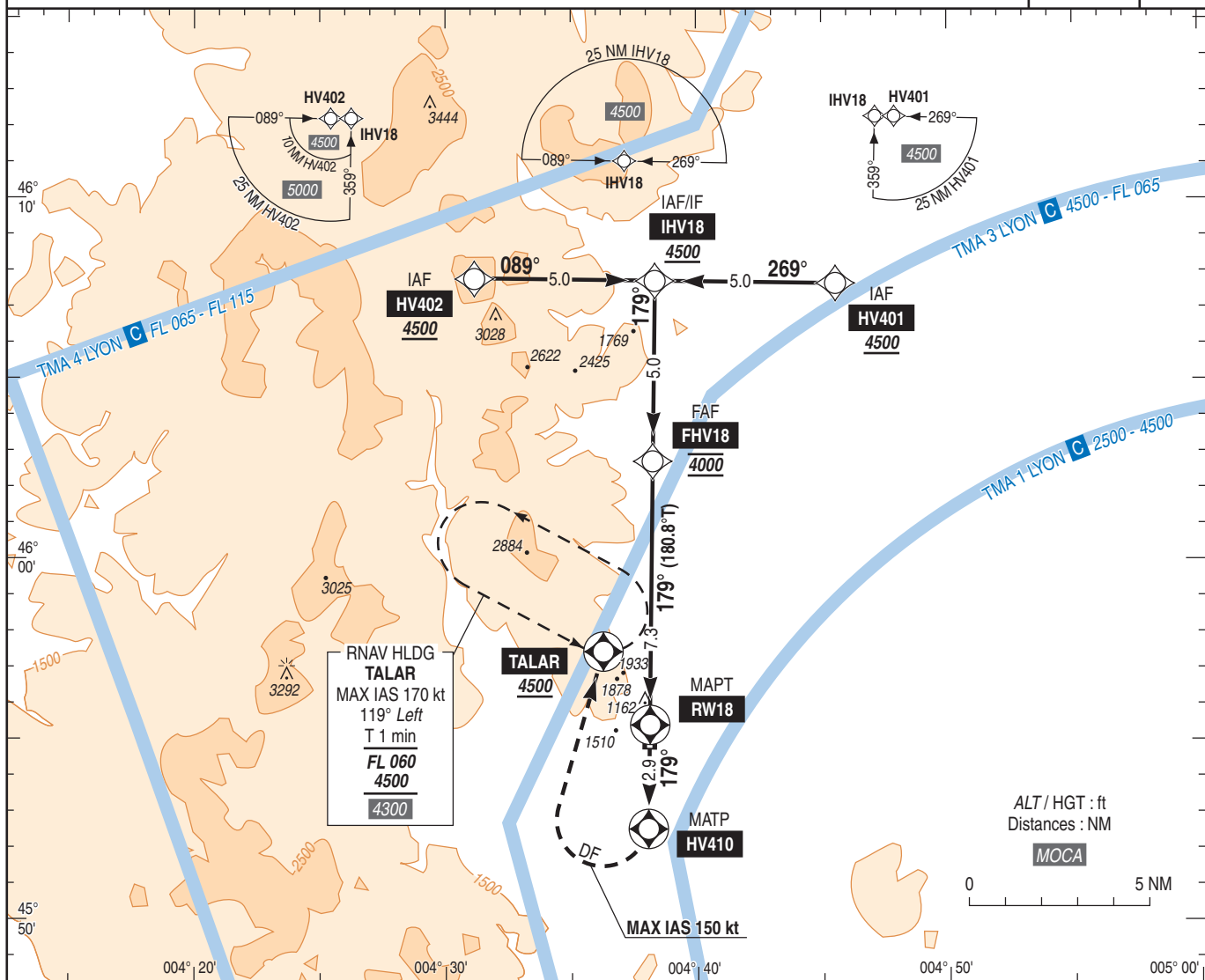
Instrument approach

CAT A B

ALT AD : 1076 (39 hPa), DTHR : 1075

RNP A RWY 18

APP : LYON Approche/Approach : 136.075	RNP APCH	VAR 2°E (2020)
TWR : NIL (AD non contrôlé / not controlled)		
AIA : 118.255 (FR seulement/only). Obtenir QNH sur ATIS SAINT EXUPERY 126.180 / Obtain QNH on ATIS SAINT EXUPERY 126.180		



DTHR ← (NM)

MNM AD : distances verticales en pieds, VIS en mètres / vertical distances in feet, VIS in metres. REF HGT : ALT AD

CAT	MVL / Circling (1)(2) absence ATS sans/without QNH local		DIST RWY18					
	MDA (H)	VIS	NM	3	4	5	6	7
A	2330 (1260)	1500	ALT	2300	2700	3090	3480	3880
B			1600	(HGT)	(1224)	(1624)	(2014)	(2404)

Observations / Remarks : (1) MVL interdites à l'Ouest de la piste / Circling prohibited West of RWY. (2) HJ seulement / only.

FAF - MAPT	7.3 NM	70 kt	85 kt	100 kt	115 kt	130 kt
VSP (ft/min)		6 min 16	5 min 10	4 min 23	3 min 49	3 min 23
		460	560	660	760	850