

APPROCHE AUX INSTRUMENTS

Instrument approach

CAT A B C D

ALT AD : 245, THR : 219 (8 hPa)

BIARRITZ PAYS BASQUE

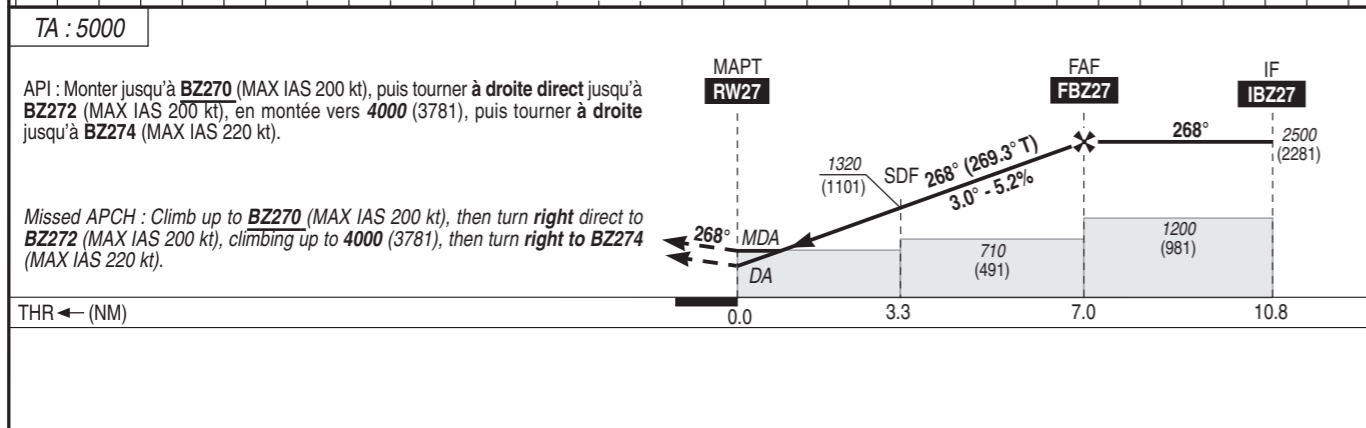
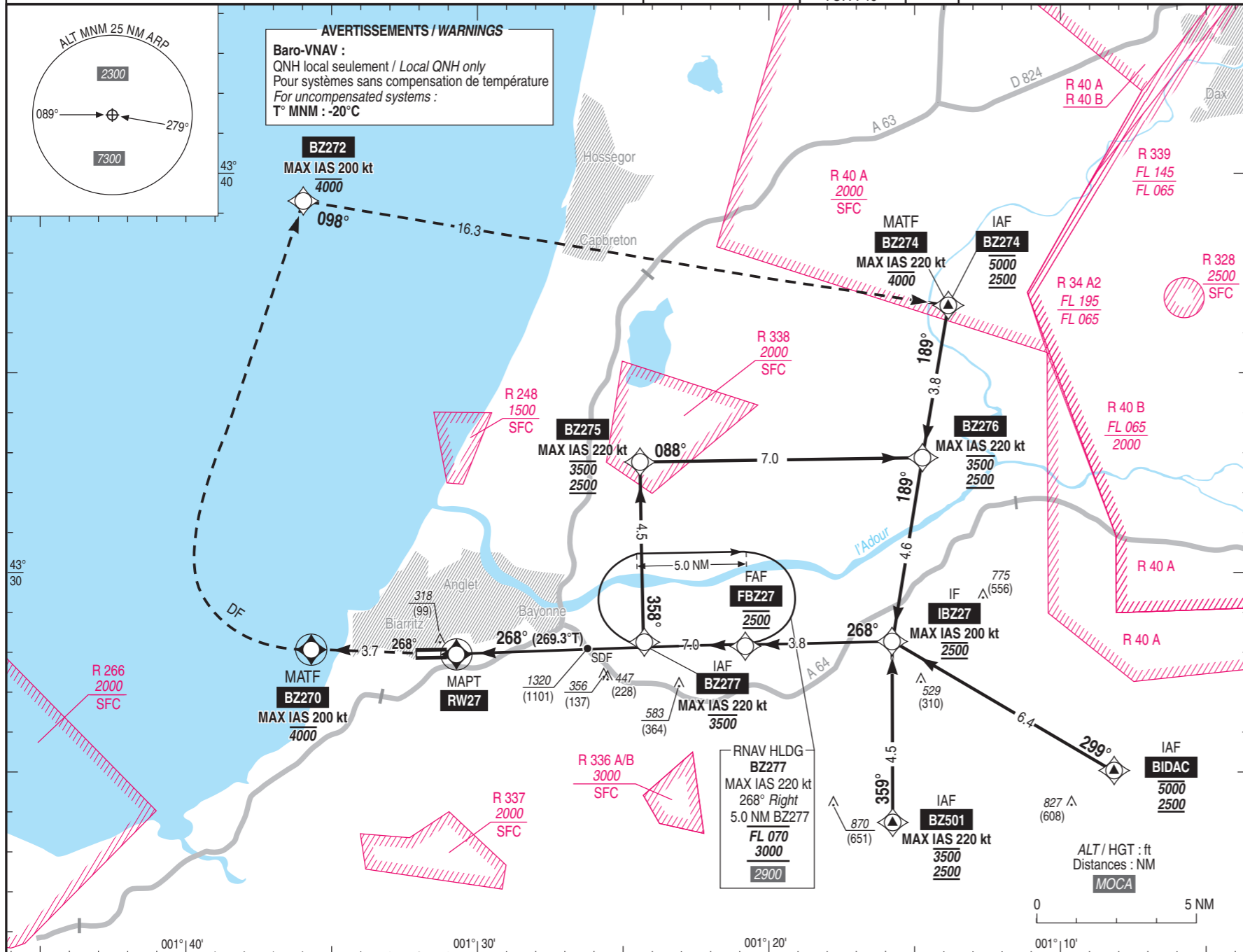
RNP RWY 27

ATIS : BIARRITZ : 128.230
APP : BIARRITZ Approche / Approach 125.600
TWR : BIARRITZ Tour / Tower 118.700

RNP APCH
Fonction attendue requise /
Holding function required

EGNOS
Ch 52742
E27A
TCH : 49

VAR
1° E
(2025)



MNM AD : distances verticales en pieds, RVR et VIS en mètres / vertical distances in feet, RVR and VIS in metres. REF HGT : ALT THR

CAT	LPV			LNAV-VNAV			LNAV			MVL / Circling ⁽¹⁾		DIST RW27
	DA (H)	RVR	OCH	DA (H)	RVR	OCH	MDA (H)	RVR	OCH	MDA (H)	VIS	
A	420 (200)	156	156	470 (250)	230	230	580 (360)	1500	355	720 (500)	1500	NM ALT
B	420 (200)	1200	169	470 (250)	1300	240	580 (360)	1500	355	900 (680)	1600	1 590
C	420 (200)		185	470 (250)	250	250	580 (360)	1600		1000 (780)	2400	2 910
D	430 (210)		202	480 (260)	260	260	580 (360)	1600		1070 (850)	3600	3 1220
												4 1540
												5 1850
												6 2170
												(HGT) (371) (691) (1001) (1321) (1631) (1951)
Observations/Remarks : (1) MVL interdites au Nord de la piste. Circuit AD RWY 09 : Droite. / Circling prohibited North of RWY. Aerodrome circuit RWY 09 : right hand.												
FAF - THR 7.01 NM 70 kt 80 kt 85 kt 90 kt 95 kt 115 kt 145 kt 160 kt 185 kt												
VSP (ft/min) 370 420 450 480 500 610 770 850 980												