

APPROCHE AUX INSTRUMENTS

Instrument approach
CAT A B C D

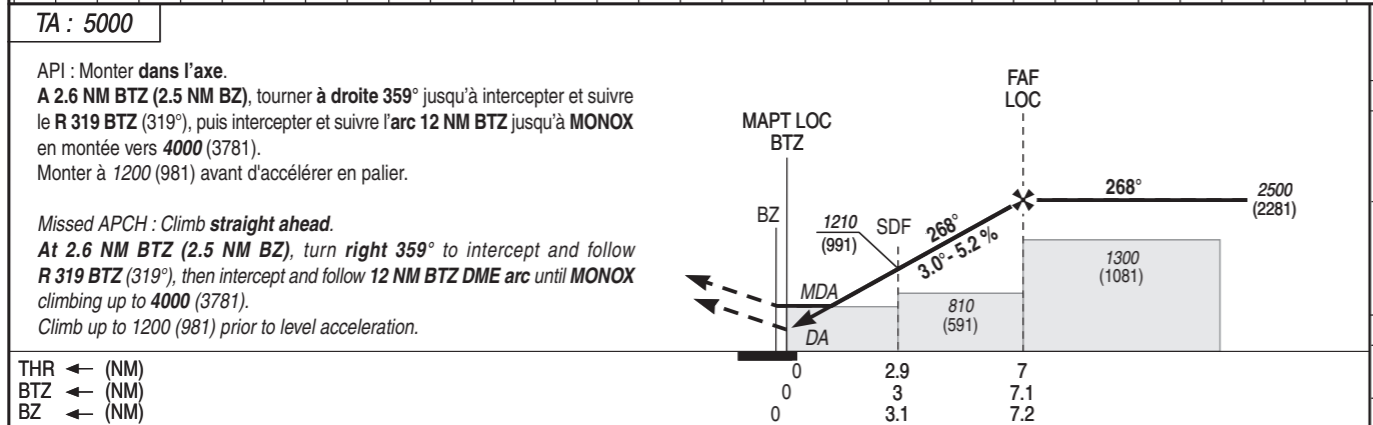
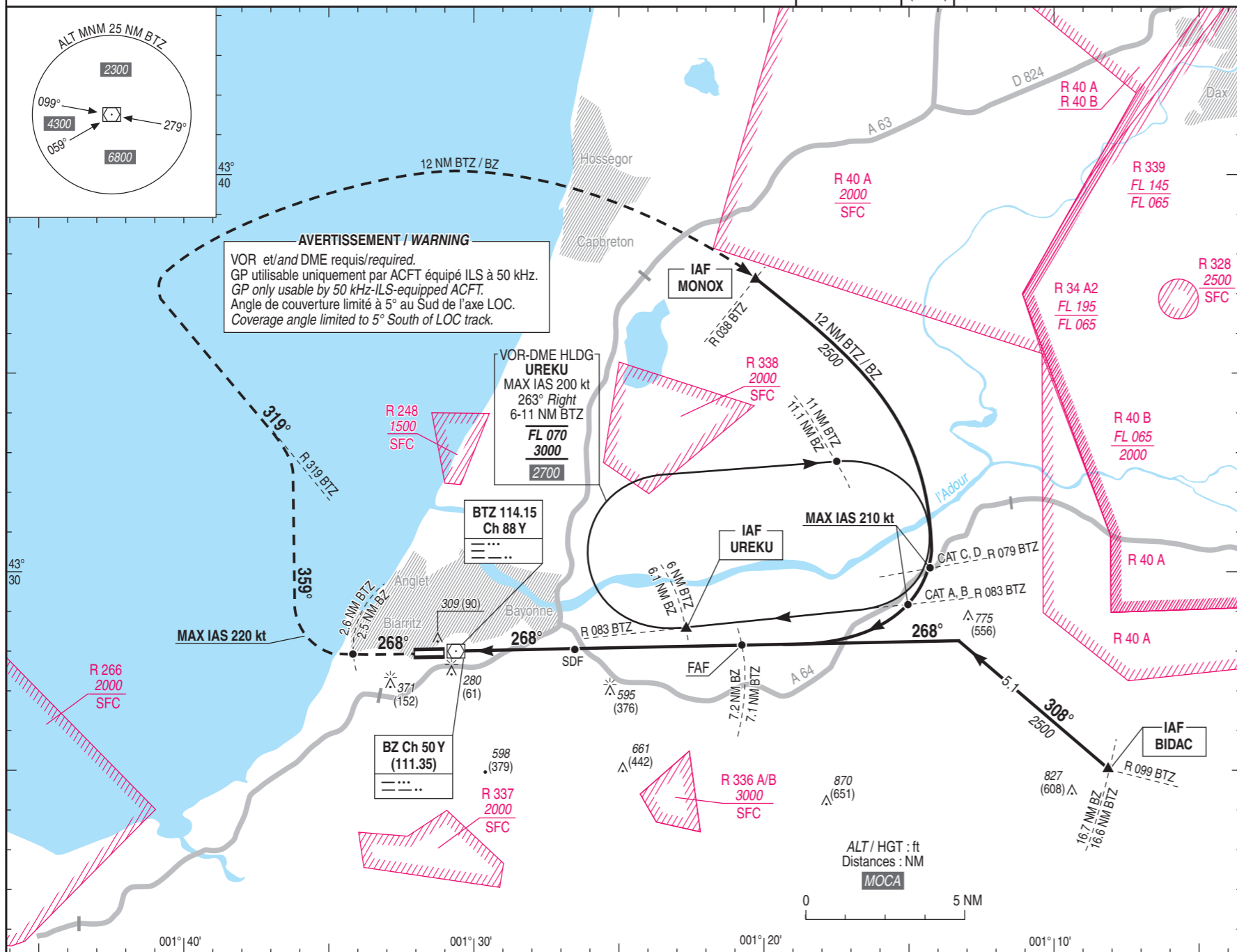
ALT AD : 245, THR : 219 (8 hPa)

BIARRITZ PAYS BASQUE

ILS Y ou/ or LOC Y RWY 27

ATIS : BIARRITZ : 128.230
APP : BIARRITZ Approche / Approach 125.600
TWR : BIARRITZ Tour / Tower 118.700

ILS/DME
BZ 111.35
RDH : 49
VAR
1° E
(2025)



MNM AD : distances verticales en pieds, RVR et VIS en mètres / vertical distances in feet, RVR and VIS in metres. REF HGT : ALT THR

CAT	ILS Y			LOC Y			MVL / Circling (1)		DME BTZ						
	DA (H)	RVR	OCH	MDA (H)	RVR	OCH	MDA (H)	VIS	NM	1	2	3	4	5	6
A	420 (200)		155				720 (500)	1500	ALT (HGT)	570 (351)	890 (671)	1210 (991)	1520 (1301)	1840 (1621)	2160 (1941)
B	420 (200)	1200	169	560 (340)	1500	337	900 (680)	1600	DME BZ						
C	420 (200)		185				1000 (780)	2400	NM	1	2	3	4	5	6
D	430 (210)		203				1070 (850)	3600	ALT (HGT)	570 (351)	860 (641)	1170 (951)	1490 (1271)	1800 (1581)	2120 (1901)

Observations/Remarks : (1) MVL interdites au Nord de la piste. Circuit AD RWY 09 : Droite / Circling prohibited North of RWY. Aerodrome circuit RWY 09 : right hand.

FAF - THR	7 NM	70 kt	80 kt	90 kt	100 kt	115 kt	130 kt	145 kt	160 kt	175 kt	185 kt
VSP (ft/min)		370	420	475	525	605	685	765	840	920	975