

APPROCHE AUX INSTRUMENTS

PAU PYRENEES

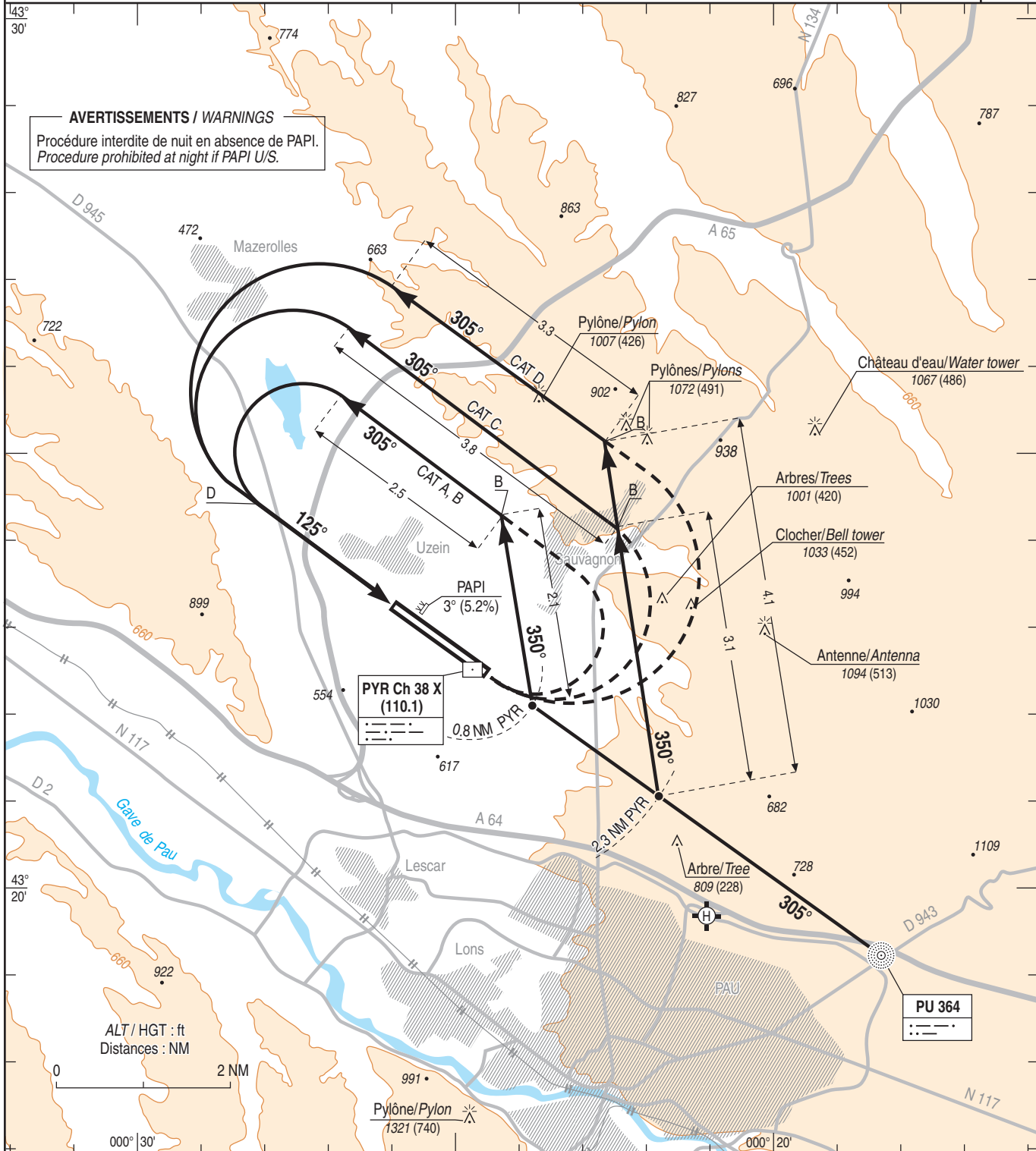
Instrument approach

CAT A B C D

ALT AD : 616, THR : 581 (22 hPa)

VPT A RWY 13

ATIS : PAU 128.480	VAR 0° (2020)
APP : PYRENEES Approche / Approach 128.800 - 121.175 (s)	
TWR : PAU Tour / Tower 124.150	



MNM AD : distances verticales en pieds, VIS en mètres / vertical distances in feet, VIS in metres. REF HGT : ALT THR

CAT	VPT A	
	MDA (H)	VIS
A	1300 (720)	1500
B	1300 (720)	1600
C	1470 (890)	2400
D	1500 (920)	3600

Observations / Remarks : NIL.