

APPROCHE AUX INSTRUMENTS

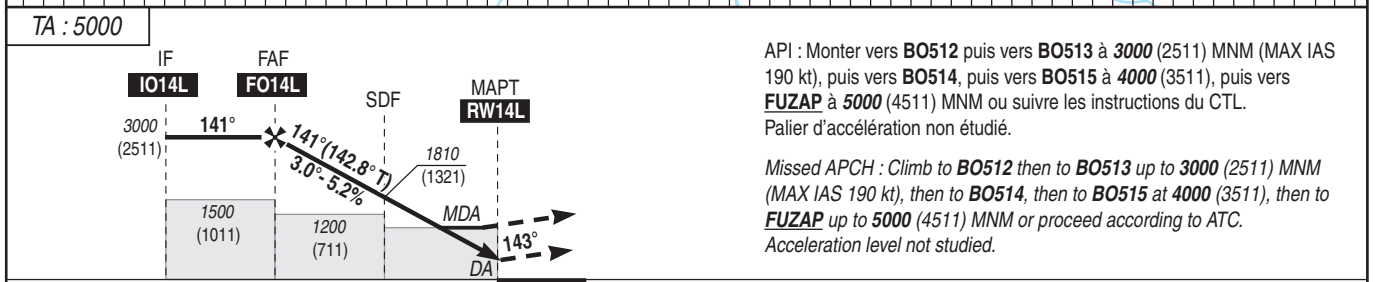
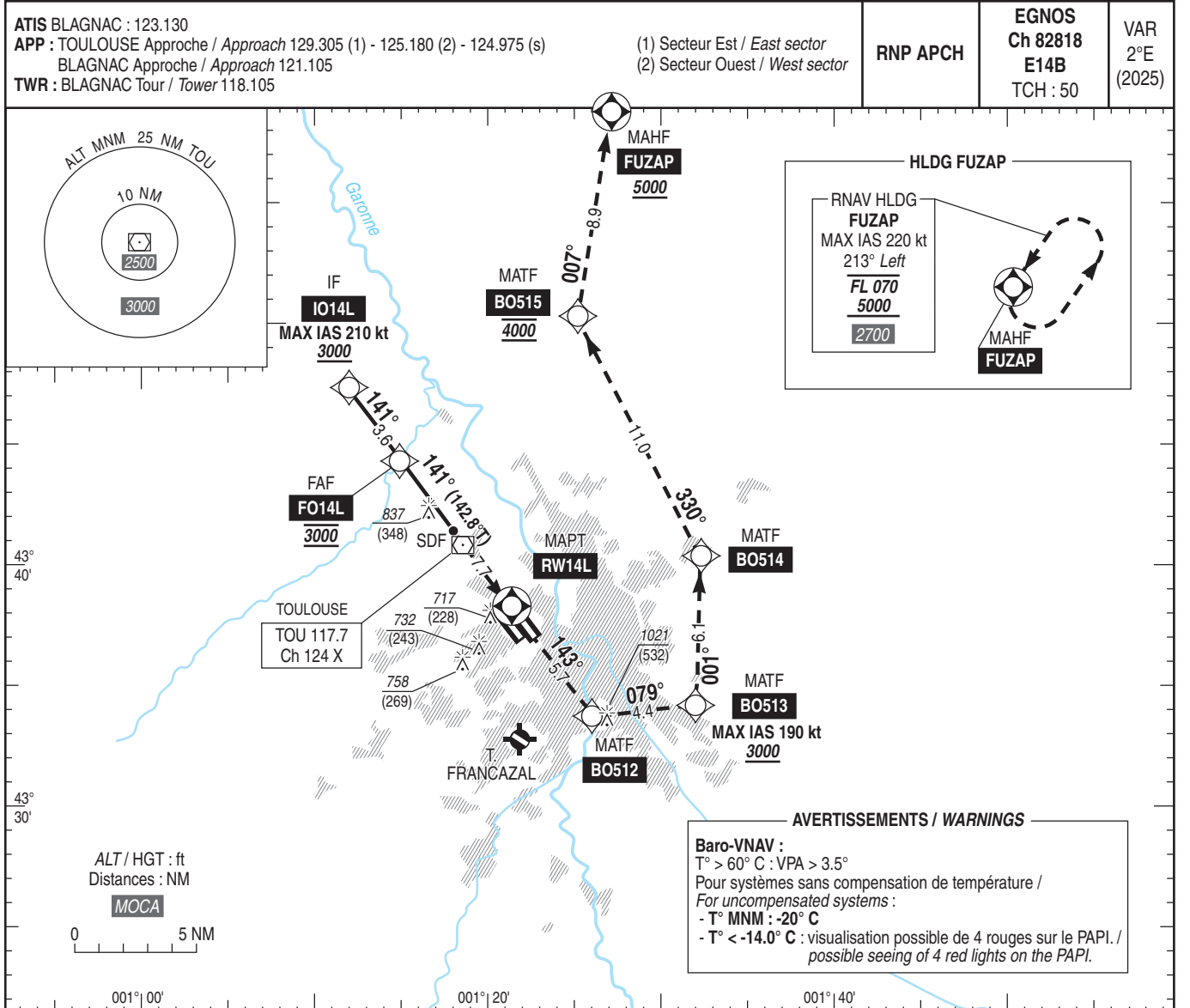
TOULOUSE BLAGNAC

Instrument approach

CAT A B C D

ALT AD : 499, THR : 489 (18 hPa)

FNA RNP RWY 14L



MNM AD : distances verticales en pieds, RVR et VIS en mètres / vertical distances in feet, RVR and VIS in metres. REF HGT : ALT THR

CAT	LPV			LNAV/VNAV			LNAV			MVL / Circling ⁽¹⁾		DIST RW14L
	DA (H)	RVR	OCH	DA (H)	RVR	OCH	MDA (H)	RVR	OCH	MDA (H)	VIS	
A	690 (200)	550	157	930 (440)	1300	334	970 (480)	1500	474	1030 (550)	1500	NM 7 6 5 4 3 2 ALT 2770 2450 2130 1810 1490 1180 (HGT) (2281) (1961) (1641) (1321) (1001) (691)
B			166	940 (450)	1400	345				1060 (570)	1600	
C			178	940 (460)	1400	351				1420 (930)	2400	
D			189	950 (460)	1400	360				1420 (930)	3600	
DL			193									

Observations/Remarks : (1) MVL interdites au Nord-Est de la piste / Circling prohibited North-East RWY.
 Panne de guidage GNSS durant l'approche / GNSS guidance loss during approach : voir/see AIP ENR 1.5

	FAF - MAPT	7.73 NM	70 kt	85 kt	100 kt	115 kt	130 kt	160 kt	185 kt
VSP (ft/min)			370	450	530	610	685	845	980