

**APPROCHE AUX INSTRUMENTS**

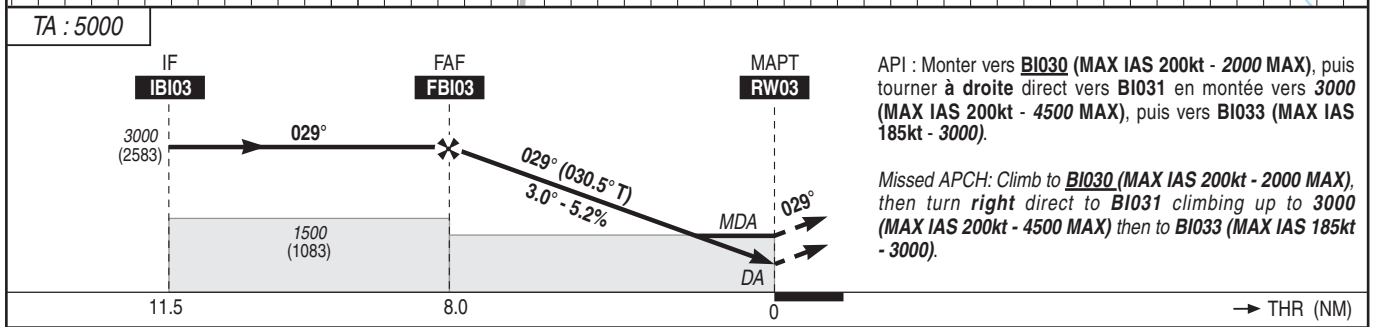
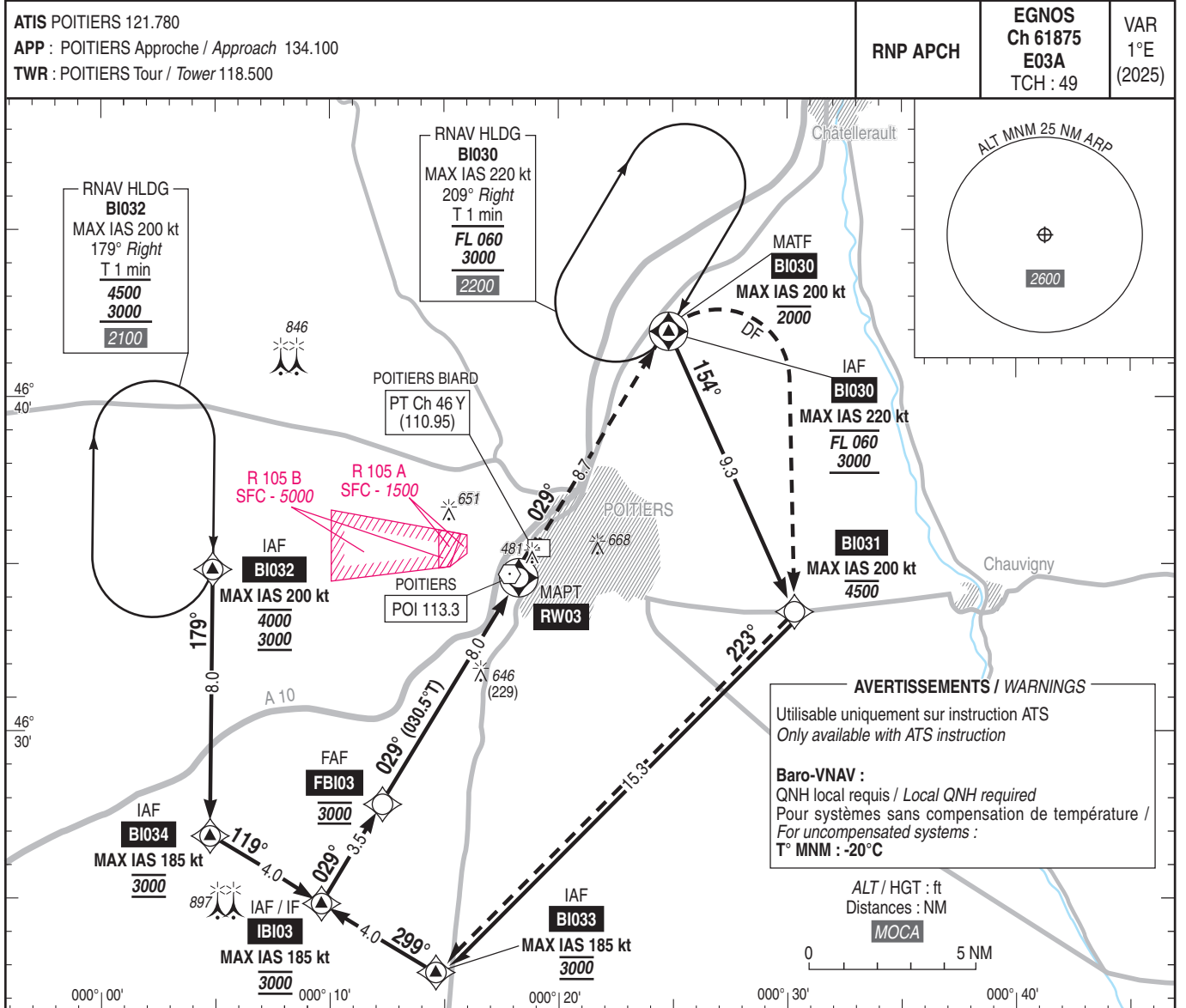
**POITIERS BIARD**

Instrument approach

CAT A B C D

ALT AD : 423, THR : 417 (16 hPa)

RNP RWY 03



MNM AD : distances verticales en pieds, RVR et VIS en mètres / vertical distances in feet, RVR and VIS in metres. REF HGT : ALT THR

CAT	LPV			LNAV-VNAV			LNAV			MVL / Circling (1)		DIST RW03 NM ALT (HGT)
	DA (H)	RVR	OCH	DA (H)	RVR	OCH	MDA (H)	RVR	OCH	MDA (H)	VIS	
A			163			174	1500			970 (550)	1500	7
B	670 (250)	1300	173	670 (250)	1300	181	1500			970 (550)	1600	6
C			183			194	890 (470)	467		1140 (720)	2400	5
D			193			220	2200			1140 (720)	3600	4
												3
												2

Observations / Remarks : (1) MVL interdites au Sud-Est de la piste. / Circling prohibited South-East of RWY.

		70 kt	80 kt	90 kt	100 kt	115 kt	130 kt	145 kt	160 kt	185 kt
FBI03 - MAPT	8.0 NM	6 min 51	6 min 00	5 min 20	4 min 48	4 min 10	3 min 42	3 min 19	3 min 00	2 min 36
VSP (ft/min)		370	420	480	530	610	690	770	840	980