

APPROCHE AUX INSTRUMENTS

LA ROCHELLE ILE DE RE

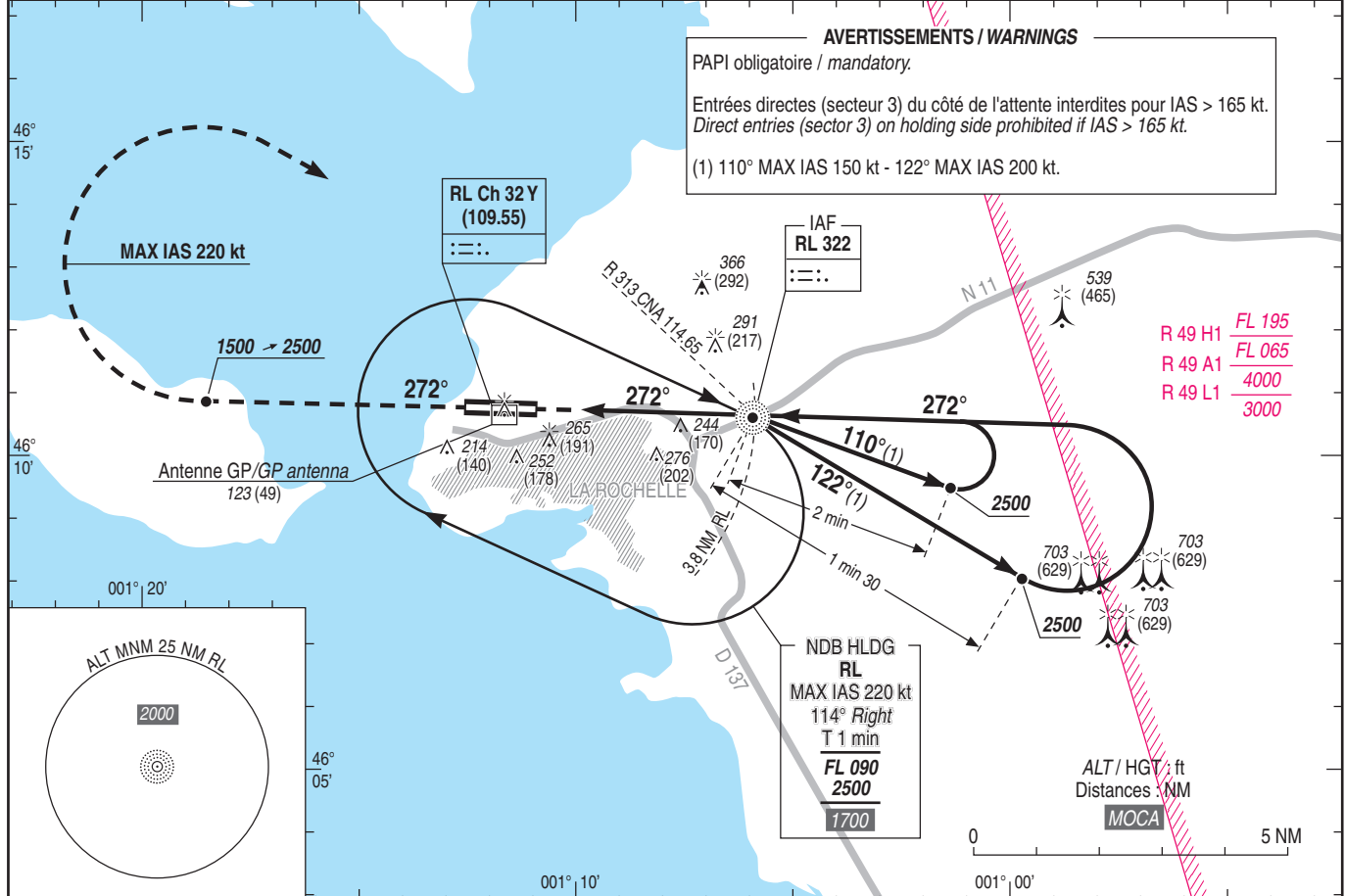
Instrument approach

CAT A B C

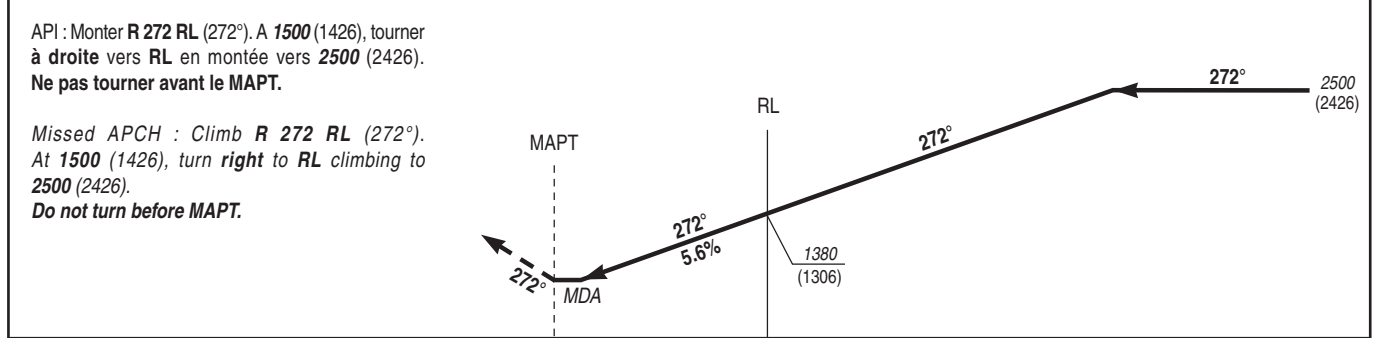
NDB Y RWY 27

ALT AD : 74 (3 hPa), DTHR : 74

ATIS LA ROCHELLE 126.880 APP : LA ROCHELLE Approche/Approach 124.200 TWR : LA ROCHELLE Tour/Tower 118.000 Absence ATS : A/A (118.000) FR uniquement. Obtenir le QNH de NANTES sur ATIS NANTES 126.930 ou NANTES Information 130.275 - 119.400 (s). A/A (118.000) FR only. Obtain NANTES QNH on NANTES ATIS 126.930 or NANTES Information 130.275 - 119.400 (s).	VAR 1°E (2025)
---	----------------------



TA : 5000 R 49 L1/A1/H1 3000-FL195



DTHR ← (NM) 0.8 3.7

MNM AD : distances verticales en pieds, RVR et VIS en mètres. / Vertical distances in feet, RVR and VIS in metres. REF HGT : ALT AD

CAT	NDB Y			MVL/Circling ⁽²⁾		MVL/Circling absence ATS ⁽²⁾ HJ seulement/only ⁽³⁾	
	MDA (H)	RVR	OCH	MDA (H)	VIS	MDA (H)	VIS
A		1500		570 (490)	1500	850 (780)	1500
B	560 (490)	1500	485	680 (600)	1600	960 (890)	1600
C		1800		780 (700)	2400	1060 (990)	2400

Observations/Remarks : (2) MVL interdites au Sud de la piste / Circling prohibited South of RWY.
 (3) MVL H24 pour hélicoptères autorisés avec PCL / Circling H 24 for helicopters authorized with PCL.

RL - DTHR	3.7 NM	70 kt	85 kt	100 kt	115 kt	130 kt	145 kt	160 kt
RL - MAPT	2.9 NM	3 min 10	2 min 37	2 min 13	1 min 56	1 min 42	1 min 32	1 min 23
VSP (ft/min)		395	480	565	650	735	820	905