

APPROCHE AUX INSTRUMENTS

TOULOUSE FRANCAZAL

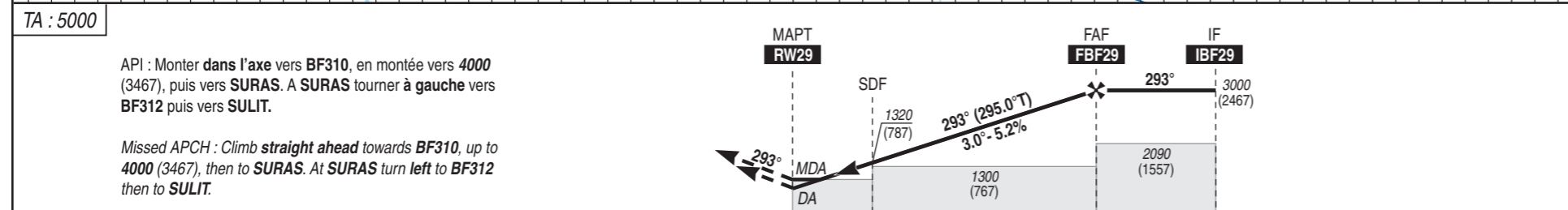
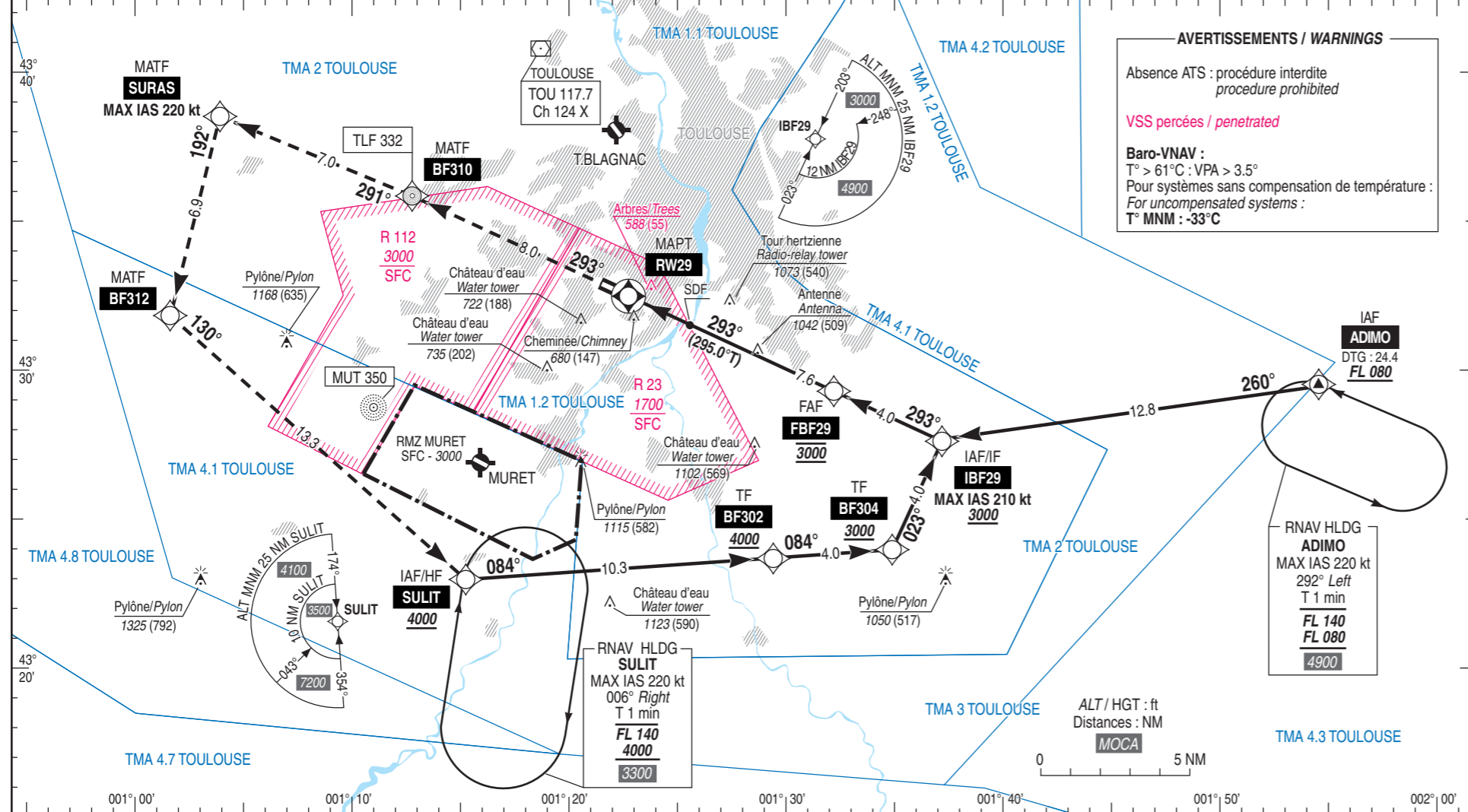
Instrument approach

CAT A B C

ALT AD : 535, THR : 533 (20 hPa)

RNP RWY 29

APP : TOULOUSE Approche / Approach 125.180 AFIS : FRANCAZAL information 118.805	RNP APCH	EGNOS CH 70003 E29A TCH : 50	VAR 2°E (2025)
--	----------	---------------------------------------	----------------------



THR ← (NM)

MNM AD : distances verticales en pieds, RVR et VIS en mètres / vertical distances in feet, RVR and VIS in metres.

REF HGT : ALT THR

CAT	LPV			LNAV/VNAV			LNAV			MVL / Circling (1)	
	DA (H)	RVR	OCH	DA (H)	RVR	OCH	MDA (H)	RVR	OCH	MDA (H)	VIS
A	790 (250)	1300	234	910 (380)	1500	277	920 (390)	1500		1020 (490)	1500
B	790 (250)	1300	246	920 (390)	1500	288	920 (390)	1500	384	1280 (750)	1600
C	790 (260)	1300	254	920 (390)	1800	296	920 (390)	1800		1420 (890)	2400

DIST RW29	NM						
	2	3	4	5	6	7	
ALT	1220	1540	1860	2170	2490	2810	
(HGT)	(687)	(1007)	(1327)	(1637)	(1957)	(2277)	

Observations / Remarks : (1) MVL interdite au Nord de la piste / Circling prohibited North of RWY.
Panne de guidage GNSS durant l'approche / Loss of GNSS guidance during approach : voir/see AIP ENR 1.5.

FAF - MAPT	7.6 NM	70 kt	85 kt	100 kt	115 kt	130 kt	145 kt	160 kt
VSP (ft/min)		370	450	530	610	690	770	850
		6 min 30	5 min 21	4 min 33	3 min 58	3 min 30	3 min 08	2 min 51