

APPROCHE AUX INSTRUMENTS

TOULOUSE FRANCAZAL

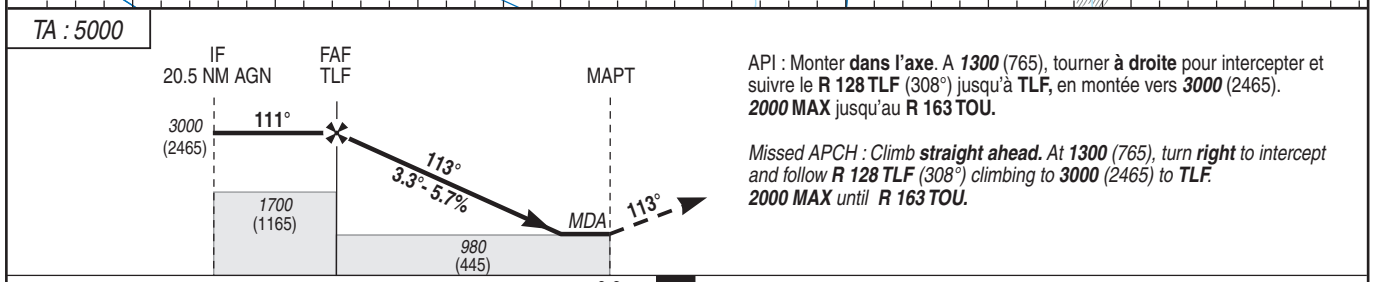
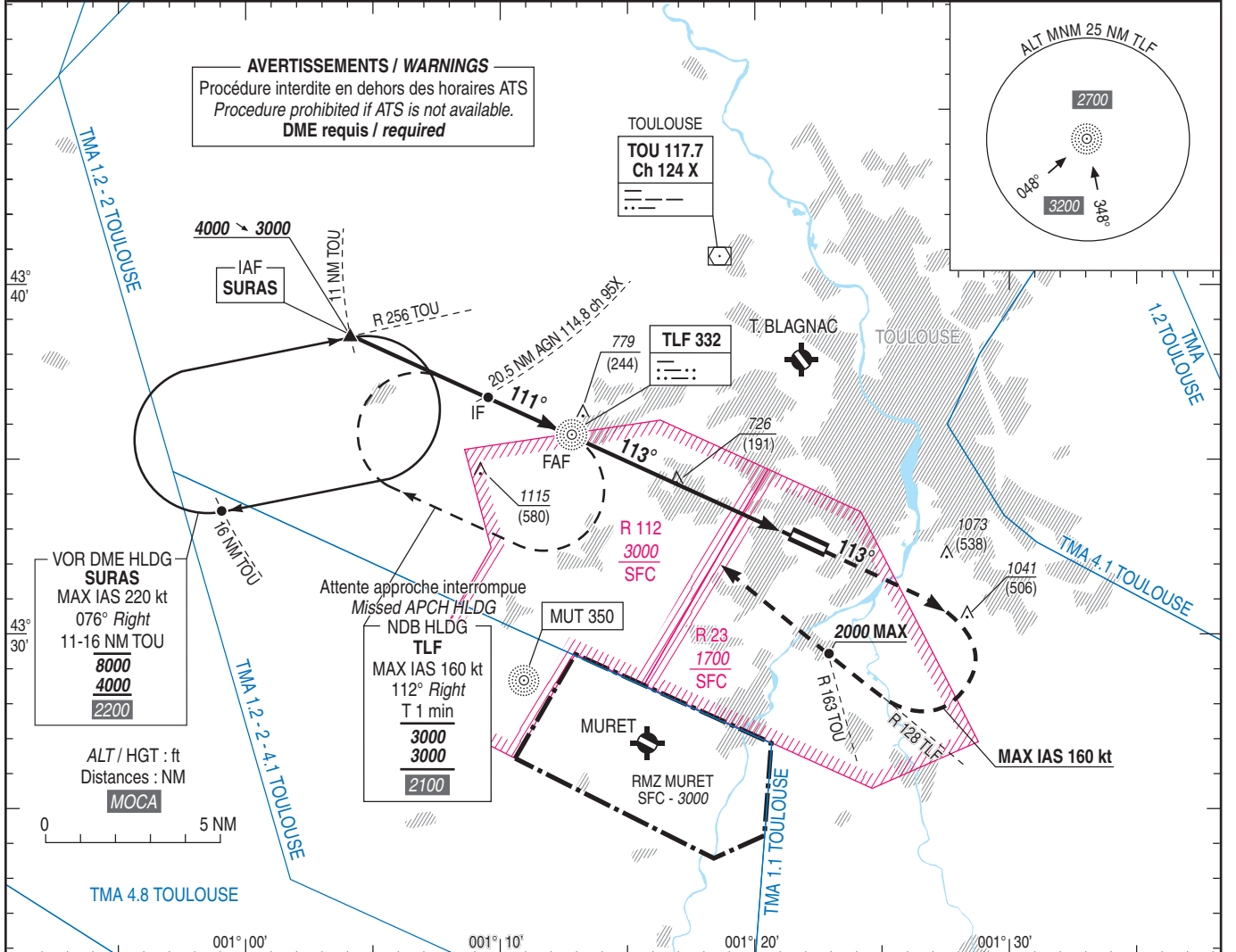
Instrument approach

CAT A B C

ALT AD : 535 (20 hPa), THR : 534

NDB RWY 11

APP : TOULOUSE Approche/Approach 125.180 AFIS : FRANCAZAL information 118.805	VAR 2°E (2025)
--	----------------------



MNM AD : distances verticales en pieds, RVR et VIS en mètres. / Vertical distances in feet, RVR and VIS in metres. REF HGT : ALT AD

CAT	NDB (1)			MVL/Circling (2)	
	MDA (H)	RVR	OCH	MDA (H)	VIS
A				1110 (580)	1500
B	980 (440)	1300	437	1240 (710)	1600
C				1500 (960)	2400

Observations/Remarks : (1) De nuit, minima relevés à ceux de la MVL. / At night, minima raised to those of the Circling.
(2) MVL interdite au nord de la piste. / Circling prohibited north of RWY.

FAF - MAPT	6.4 NM	70 kt 5 min 29	85 kt 4 min 31	100 kt 3 min 50	115 kt 3 min 20	130 kt 2 min 57	145 kt 2 min 39	160 kt 2 min 24
VSP (ft/min)		400	490	580	660	750	840	920