

APPROCHE AUX INSTRUMENTS

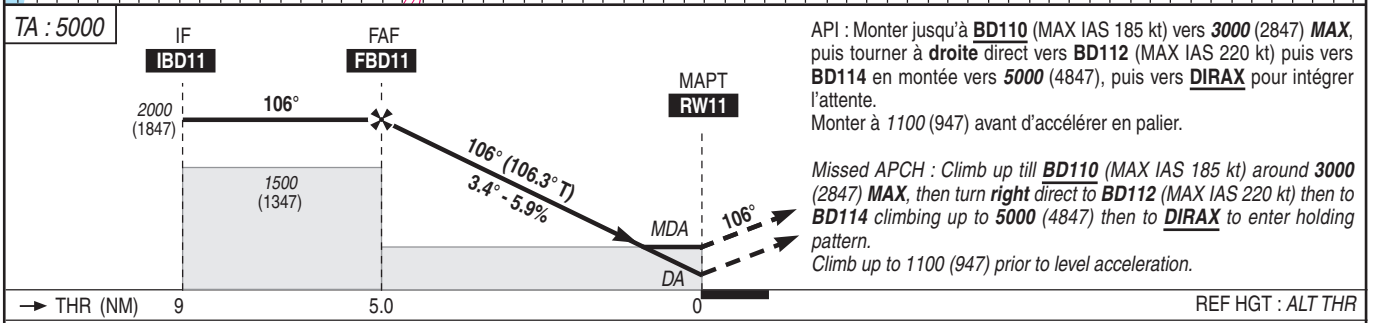
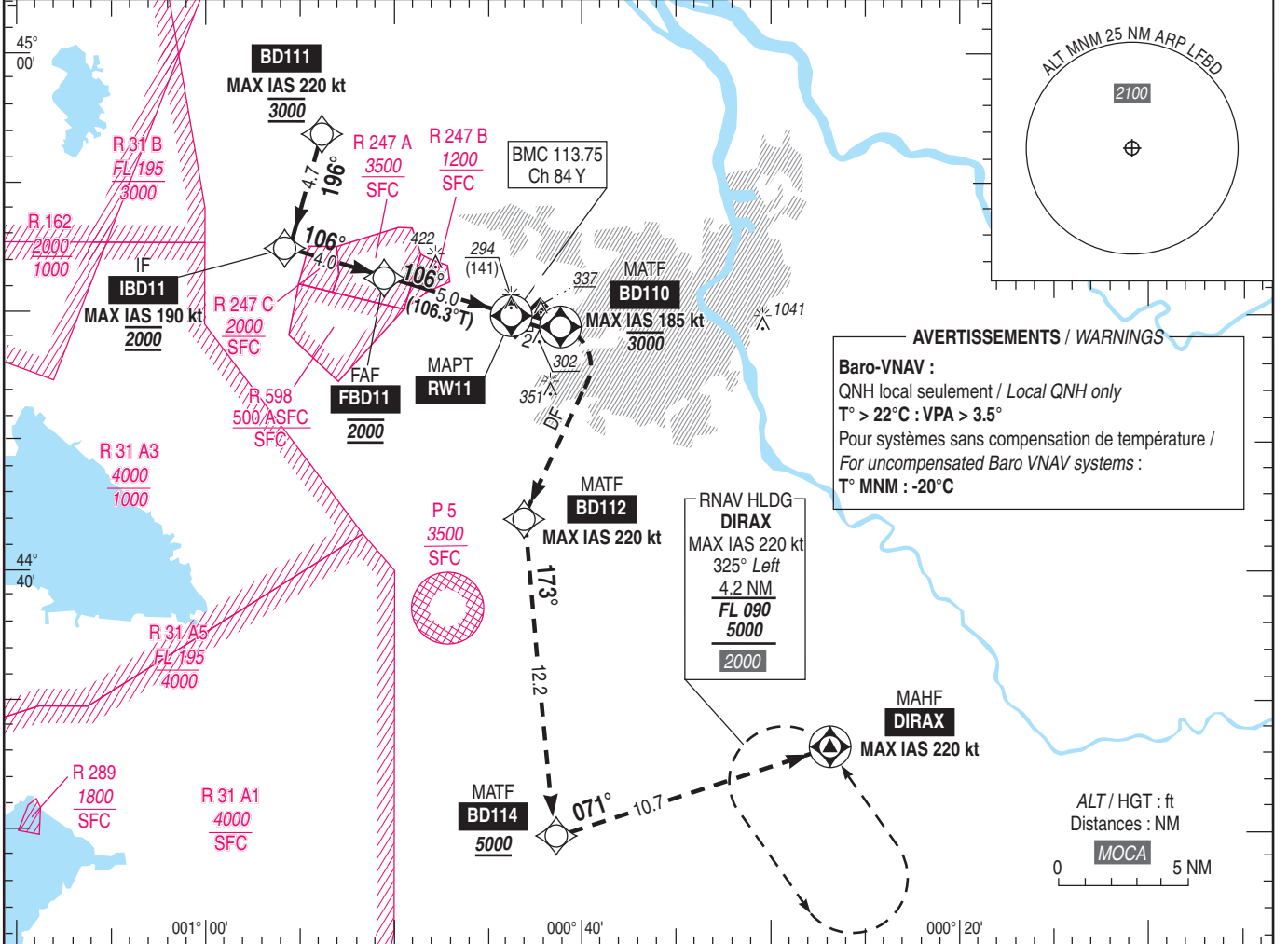
BORDEAUX MERIGNAC

Instrument approach
CAT A B C D

ALT AD : 166, THR : 153 (6 hPa)

FNA RNP RWY 11

| | | | |
|---|---|---|---------------------|
| ATIS : MERIGNAC 131.155 APP : AQUITAINE Approche / Approach 129.875 (1) - 119.275 (2) - 126.730 (3) MERIGNAC Approche / Approach 121.200 (3) TWR : MERIGNAC Tour / Tower 118.300 (1) Secteur / Sector BW (2) Secteur / Sector BE (3) Sur instruction du CTL / On ATC instruction | RNP APCH Fonctionnalité d'attente RNAV requise RNAV holding functionality required | EGNOS Ch 50040 E11A TCH : 49 | VAR 0° (2020) |
|---|---|---|---------------------|



MNM AD : distances verticales en pieds, RVR et VIS en mètres / vertical distances in feet, RVR and VIS in metres.

| CAT | LPV | | | LNAV-VNAV | | | LNAV | | | MVL / Circling (1) | | DIST RW11 |
|-----|-----------|------|-----|-----------|------|-----|-----------|------|-----|--------------------|------|--------------|
| | DA (H) | RVR | OCH | DA (H) | RVR | OCH | MDA (H) | RVR | OCH | MDA (H) | VIS | |
| A | | | 207 | 430 (280) | 1300 | 275 | | 1500 | | 640 (480) | 1500 | NM 4 |
| B | | | 221 | 450 (290) | 1400 | 289 | | 1500 | | 670 (520) | 1600 | ALT 1640 |
| C | 410 (250) | 1300 | 231 | 460 (310) | 1400 | 306 | 550 (390) | 1800 | 388 | 820 (670) | 2400 | (HGT) (1487) |
| D | | | 242 | 490 (340) | 1500 | 335 | | 1800 | | 870 (720) | 3600 | 3 1280 |
| | | | | | | | | | | | | 2 920 |
| | | | | | | | | | | | | 1 560 |

Observations / Remarks : Panne de guidage durant l'approche / Loss of GNSS guidance during approach : voir/ see ENR 1.5.
 (1) MVL interdites au Nord de la piste / Circling prohibited North of RWY.

| | | | | | | | | | | | |
|--------------|--------|-------------------|-------------------|-------------------|--------------------|--------------------|--------------------|--------------------|--------------------|--------------------|--------------------|
| FAF - THR | 5.0 NM | 70 kt 4 min 17 | 80 kt 3 min 45 | 90 kt 3 min 20 | 100 kt 3 min 00 | 115 kt 2 min 37 | 130 kt 2 min 18 | 145 kt 2 min 04 | 160 kt 1 min 53 | 175 kt 1 min 43 | 185 kt 1 min 37 |
| VSP (ft/min) | | 420 | 480 | 540 | 600 | 690 | 780 | 870 | 960 | 1050 | 1110 |