

# APPROCHE A VUE

## Visual approach

Transport public à la demande  
Common carriage on request

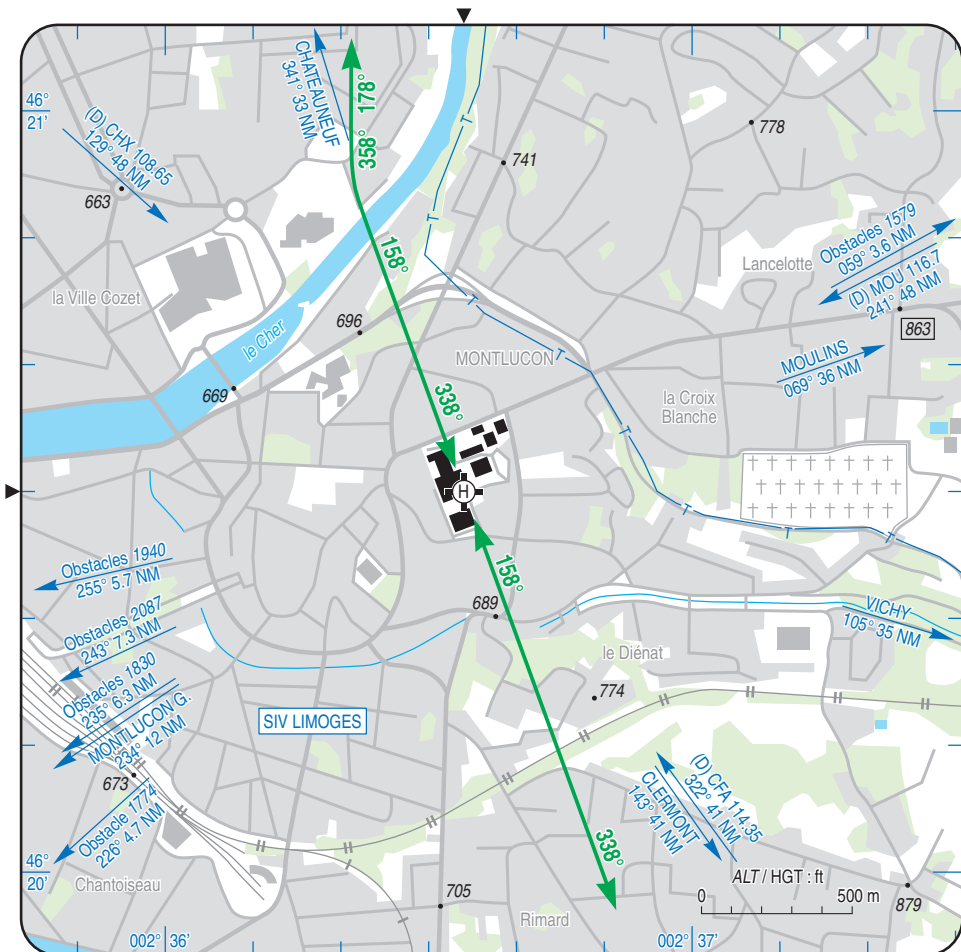
**MONTLUCON**  
Centre hospitalier/Hospital  
AD 3 APP 01

25 DEC 2025

	<b>ALT : 802 (29 hPa)</b> LAT : 46 20 30 N LONG : 002 36 34 E	VAR : 2° E (2025)
	FIS : LIMOGES Information 124.050 COM : NIL	

FIS : LIMOGES Information 124.050  
COM : NIL

EN TERRASSE / TERRACED



Utilisation de nuit /Night use : oui/yes  
Utilisation en IFR //IFR use : non/no



# MONTLUCON

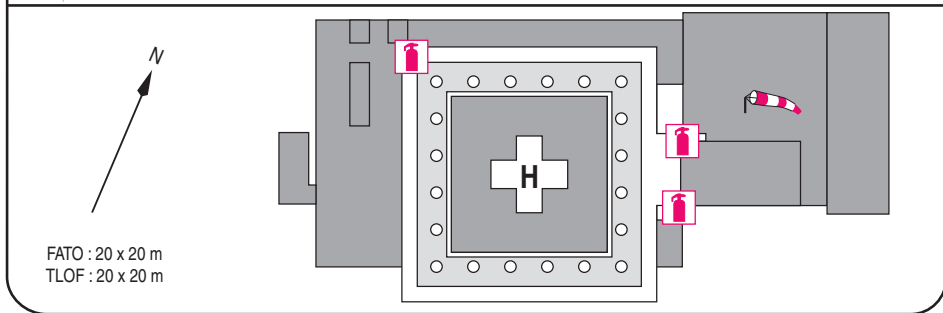
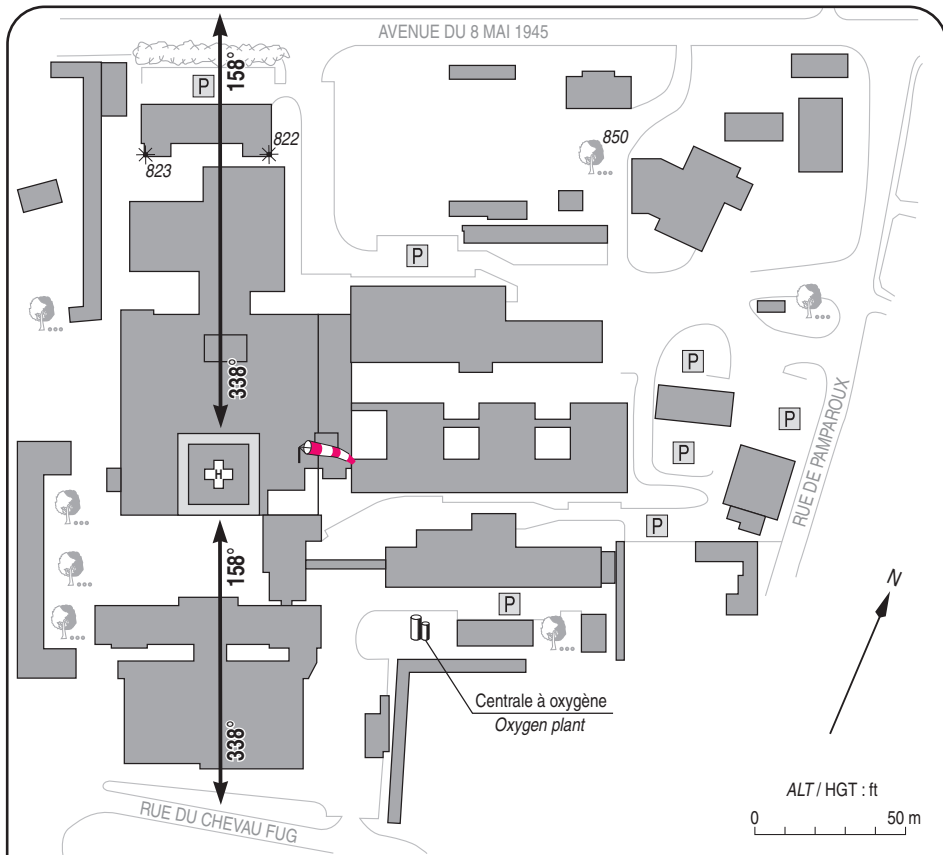
Centre hospitalier/Hospital

AD 3 ATT 01

# ATTERRISSAGE A VUE

Visual landing

25 DEC 2025



**1 - Exploitant / Operator :**

Centre hospitalier de Montluçon

☎ 04 70 02 72 18

**2 - CAA :** SNA Centre-Est (voir/see GEN)

**3 - AVT :** NIL

**4 - RFFS :** 2 x 100 kg poudre BC / BC powder

+ 1 x 50 kg poudre BC / BC powder

**5 - Police - Douanes / Police - Customs :** NIL

**6 - Hangars disponibles / Available hangars :** NIL

**7 - Réparations / Repairs facility :** NIL

**8 - Type de surface / Surface :**

béton armé + bitumastic / reinforced concrete + bitumastic

**9 - Force portante / Strength :** 4 t