

APPROCHE AUX INSTRUMENTS

Instrument approach

CAT A B C

PONTOISE CORMEILLES EN VEXIN

ALT AD : 325 (12 hPa), DTHR : 312

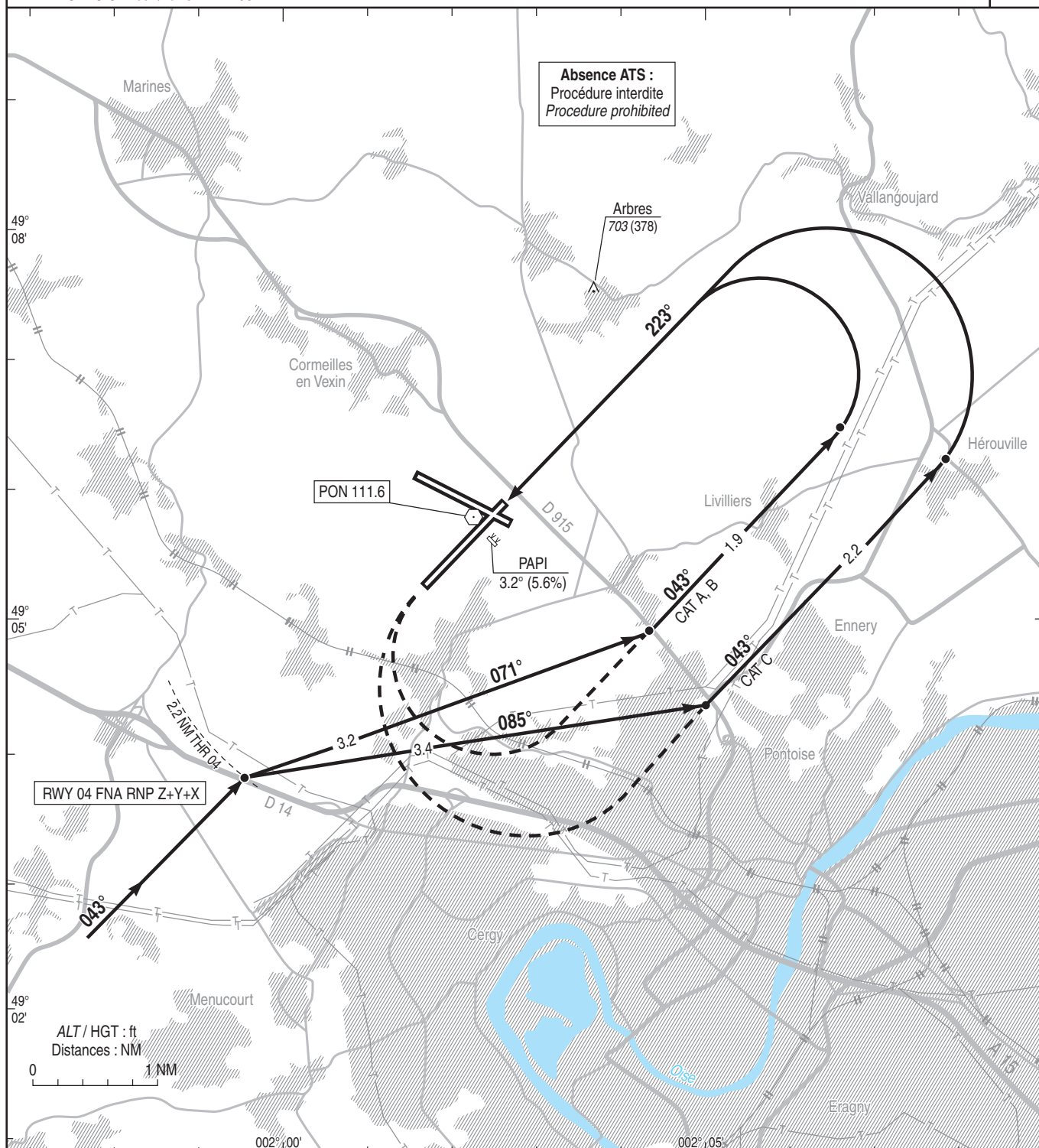
VPT RWY 22

ATIS : PONTOISE : 124.125

APP : DE GAULLE Approche / Approach 118.150 - 119.850 - 121.155 - 125.830 - 126.430 - 136.275 - 126.575 (s)

LE BOURGET Approche / Approach 118.800

TWR : PONTOISE Tour / Tower 121.200

VAR
2° E
(2025)

MNM AD : distances verticales en pieds, VIS en mètres / vertical distances in feet, VIS in metres.

REF HGT : ALT AD

CAT	VPT	
	MDA (H)	VIS
A	1000 (680)	1500
B	1000 (680)	1600
C	1100 (780)	2400

