

APPROCHE AUX INSTRUMENTS

TOULOUSE BLAGNAC

Instrument approach

CAT A B C D

ALT AD : 499 (18 hPa), **THR : 488**

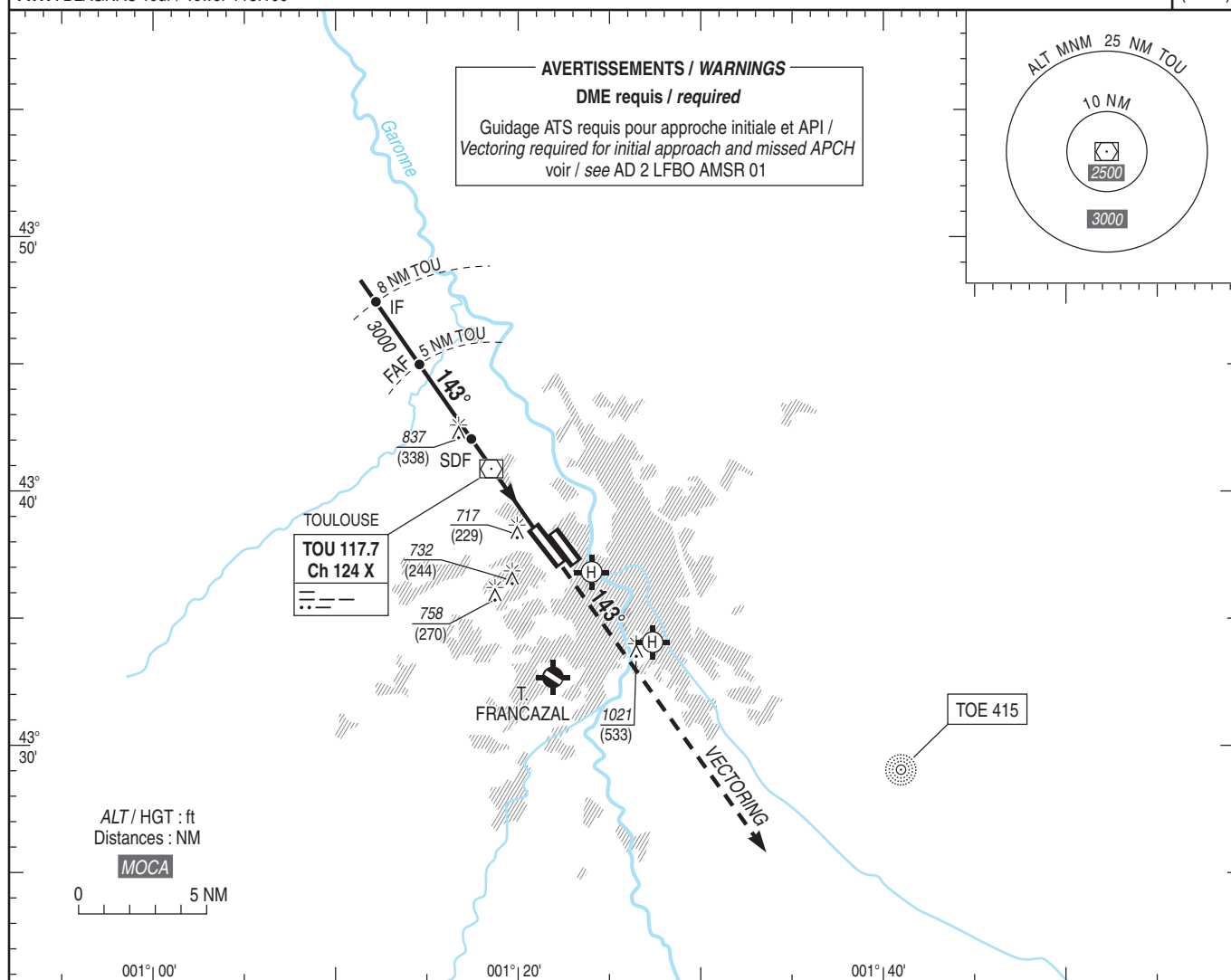
FNA VOR RWY 14R

ATIS BLAGNAC : 123.130

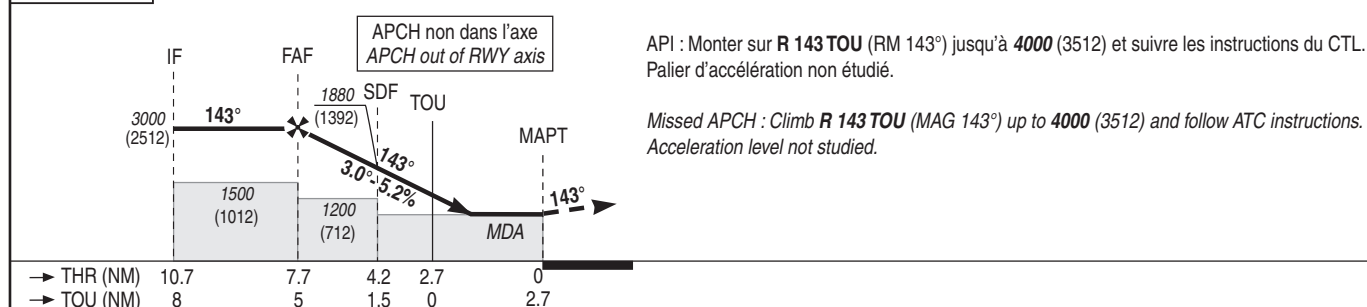
APP : TOULOUSE Approche / Approach 129.305 (1) - 125.180 (2) - 124.975 (s)

BLAGNAC Approche / Approach 121.105

TWR : BLAGNAC Tour / Tower 118.100

(1) Secteur Est / East sector
(2) Secteur Ouest / West sectorVAR
2°E
(2025)

TA : 5000



MNM AD : distances verticales en pieds, RVR et VIS en mètres / vertical distances in feet, RVR and VIS in metres.

REF HGT : ALT THR

CAT	VOR + DME TOU			MVL / Circling (1)		DME TOU							
	MDA (H)	RVR	OCH	MDA (H)	VIS	NM	5	4	3	2	1	0	1
A						ALT	3000	2680	2360	2040	1720	1410	1090
B						(HGT)	(2512)	(2192)	(1872)	(1552)	(1232)	(922)	(602)
C	970 (480)	1500	475	1030 (540)	1500								
D				1060 (570)	1600								
				1340 (860)	2400								
				1420 (930)	3600								

Observations/Remarks : (1) MVL interdites au Nord-Est de la piste / Circling prohibited North-East of RWY.

TOU - MAPT	2.7 NM	70 kt 2 min 19	85 kt 1 min 55	100 kt 1 min 37	115 kt 1 min 25	130 kt 1 min 15	160 kt 1 min 01	185 kt 0 min 53
VSP (ft/min)		Non disponible / Not available						