

APPROCHE AUX INSTRUMENTS

NUKU HIVA

Instrument approach

CAT A B

RNP RWY 06

ALT AD : 230 (9 hPa), DTHR : 230

APP : TAHITI CTL 133.500 au dessus de / above FL 045

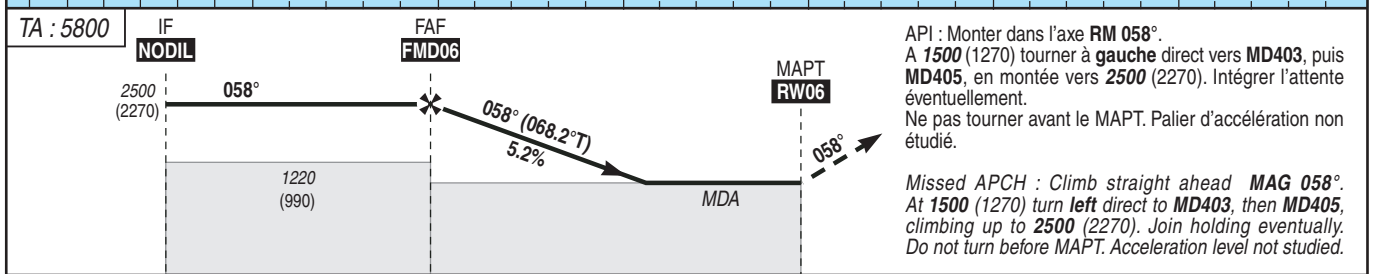
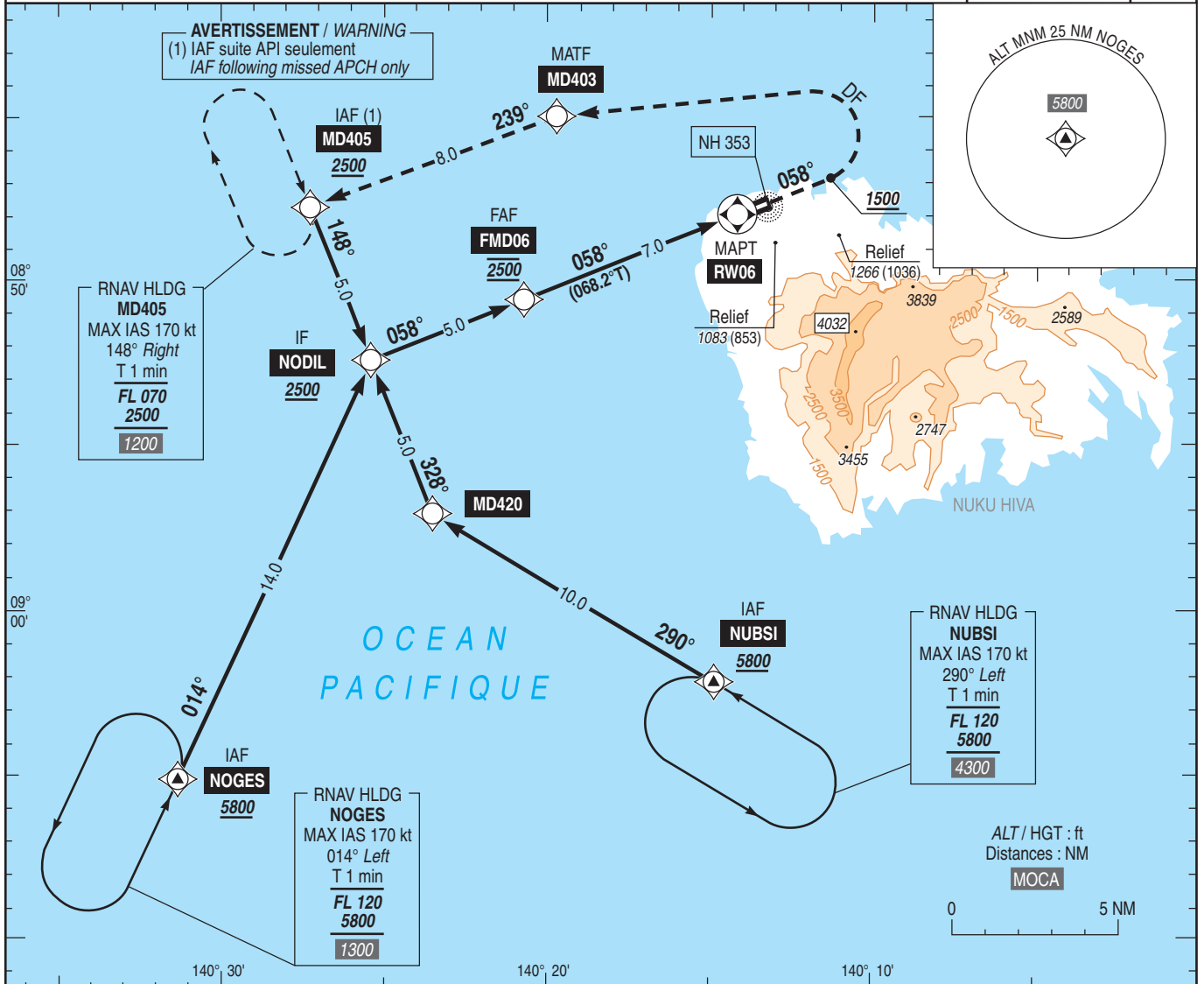
TWR : NIL

AFIS : NUKU HIVA Information 118.300 (FR seulement/only).

Absence ATS : A/A (118.300) FR seulement/only. Obtenir / Obtain QNH prévu / forecast auprès de / from TAHITI CTL ou sur / or on TEMSI.

RNP APCH

VAR
11°E
(2020)



→ DTHR (NM) 12.0 7.0 0 REF HGT : ALT AD

CAT	LNAV			MVL / Circling (2)			MVL / Circling (2) Absence ATS HJ seulement / only Sans / Without QNH local			DIST RW06				
	MDA (H)	RVR	OCH	MDA (H)	VIS	OCH	MDA (H)	VIS	OCH	NM	6	5	4	3
A B	1190 (960)	1500	958	1350 (1120)	1500 1600	1116	1490 (1260)	1500 1600	1256	ALT (HGT)	2190 (1960)	1870 (1640)	1555 (1325)	1235 (1005)

Observations / Remarks : (2) MVL interdite au Sud de la piste / Circling prohibited South of RWY.
Panne de guidage GNSS lors de l'approche / Loss of GNSS guidance during approach : voir / see AIP ENR 1.5.

		70 kt	85 kt	100 kt	110 kt	120 kt	130 kt
FMD06 - RW06	7.0 NM	5 min 59	4 min 56	4 min 11	3 min 48	3 min 29	3 min 13
VSP (ft/min)		370	450	530	585	635	690