

APPROCHE AUX INSTRUMENTS

BLOIS LE BREUIL

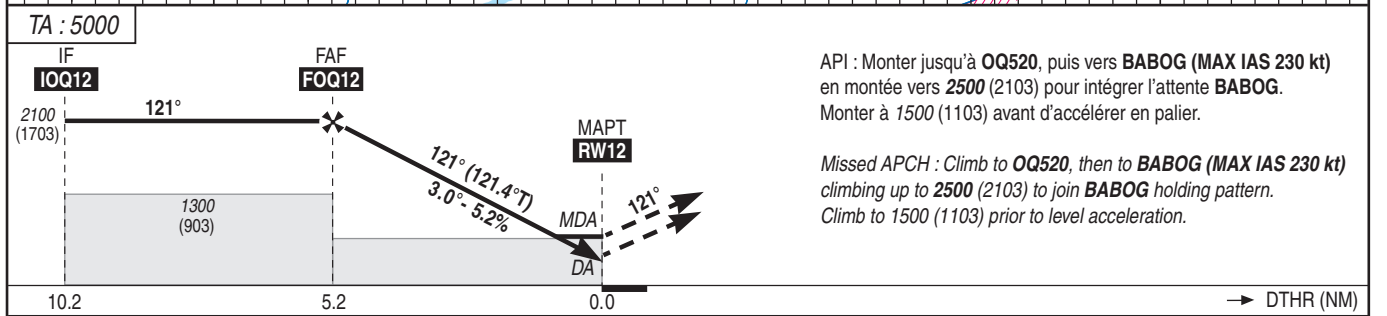
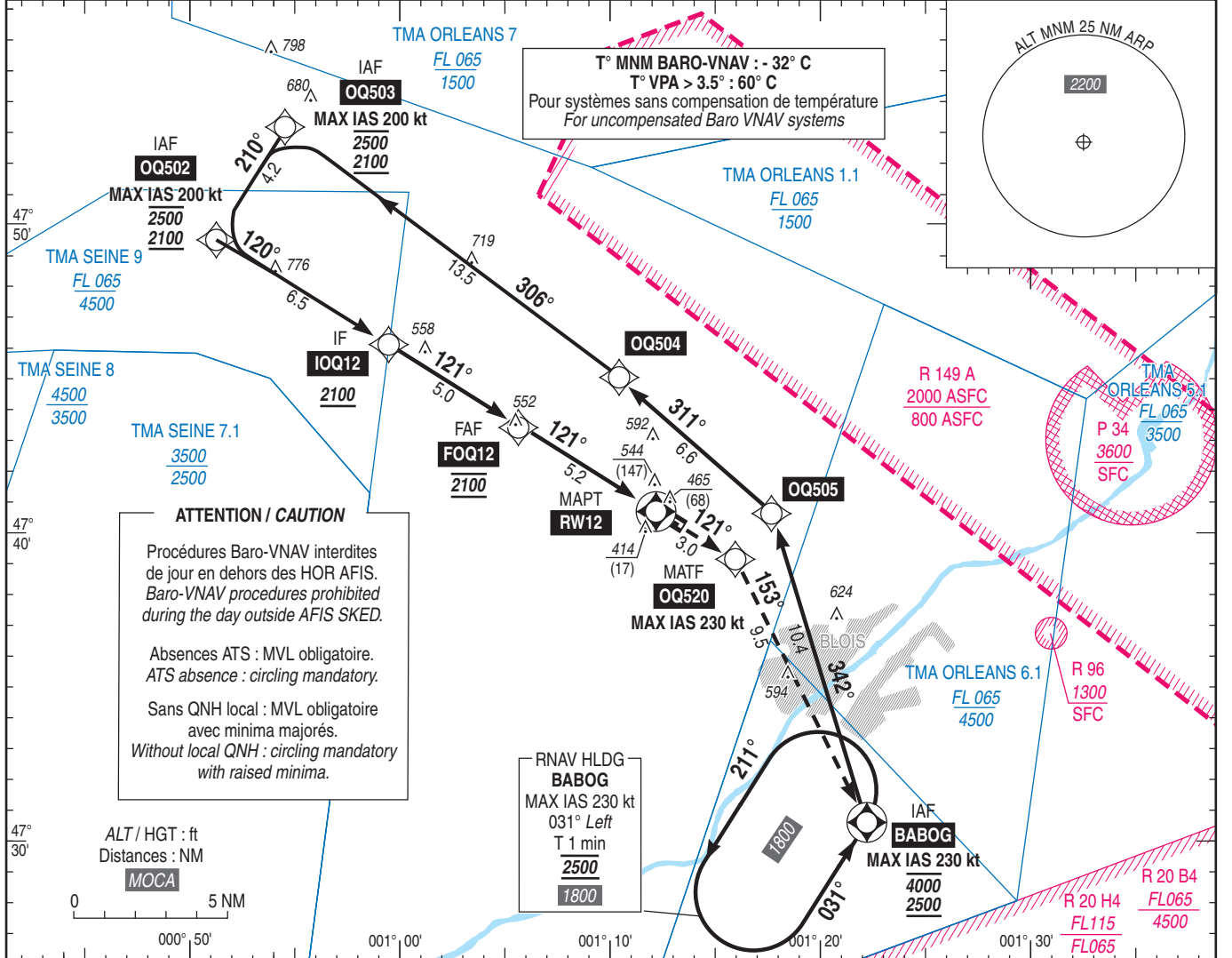
Instrument approach

CAT A B C

RNP RWY 12

ALT AD : 398 , DTHR : 397 (15 hPa)

APP : NIL TWR : NIL AFIS : 118.455	Absence ATS : A/A FR seulement. Obtenir le QNH local sur STAP ou le QNH régional auprès de SEINE APP 134.875 ou PARIS ACC 118.725. A/A FR only. Obtain local QNH from STAP or the regional QNH from SEINE APP 134.875 or PARIS ACC 118.725.	RNP APCH	EGNOS CH72374 E12A RDH/TCH : 50	VAR 1°E (2020)
--	--	----------	--	----------------------



MNM AD : distances verticales en pieds, RVR et VIS en mètres / vertical distances in feet, RVR and VIS in metres. REF HGT : ALT DTHR

CAT	LPV (1)			LNAV/VNAV			LNAV			MVL / Circling		MVL / Circling sans QNH local without local QNH		DIST RW12					
	DA (H)	RVR	OCH	DA (H)	RVR	OCH	MDA (H)	RVR	OCH	MDA (H)	VIS	MDA (H)	VIS	NM	5	4	3	2	1
A			147			214				840 (450)	1500	940 (540)	1500		2040	1720	1400	1080	770
B	650 (250)	1300	159	650 (250)	1300	221	720 (320)	1400	314	900 (500)	1600	1000 (600)	1600	(HGT)	(1643)	(1323)	(1003)	(683)	(373)
C			167			225				1000 (600)	2400	1100 (700)	2400						

Observations /Remarks : (1) Piste non homologuée CAT I. Panne de guidage GNSS durant l'approche voir AIP ENR 1.5
(1) RWY not approved for CAT I. GNSS guidance loss during approach see AIP ENR 1.5

FAF - MAPT	5.2 NM	70 kt 4 min 27	85 kt 3 min 40	100 kt 3 min 07	115 kt 2 min 43	130 kt 2 min 24	145 kt 2 min 09	160 kt 1 min 57
VSP (ft/min)		370	450	530	610	690	770	850