

APPROCHE AUX INSTRUMENTS

CHATEAUROUX DEOLS

Instrument approach

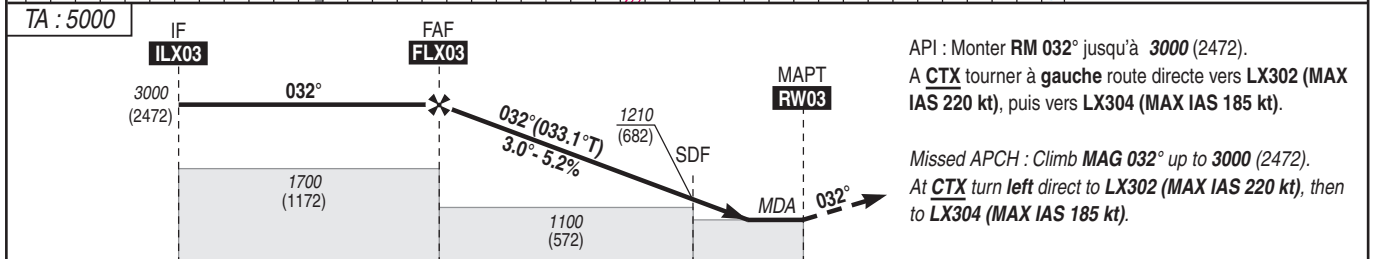
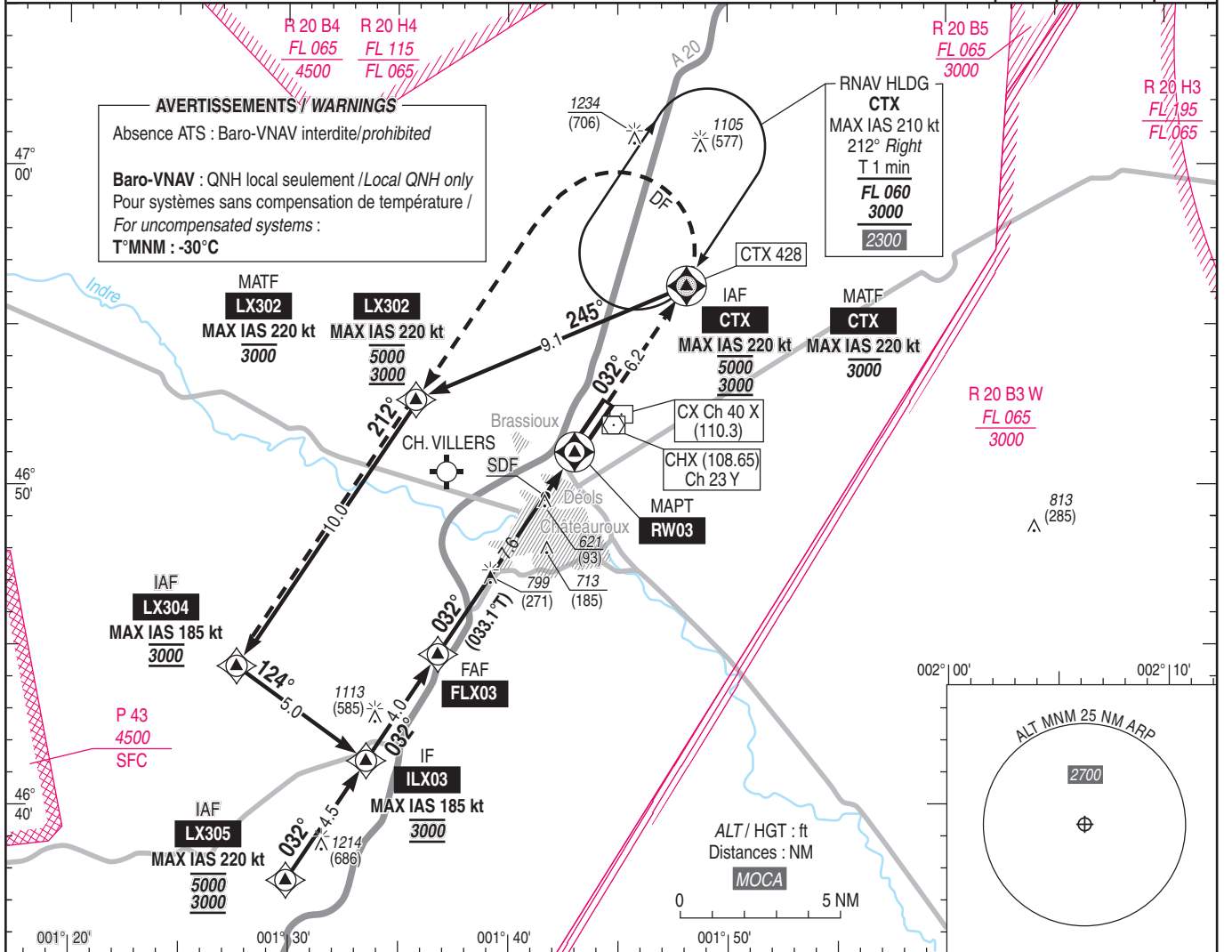
CAT A B C D

ALT AD : 529, THR : 528 (20 hPa)

RNP RWY 03

APP : POITIERS Approche/Approach 134.100
 TWR : CHATEAUROUX Tour/Tower 125.875 - 133.805 (s)
 AFIS : CHATEAUROUX Information 125.875 - 133.805 (s)
 Absence ATS : A/A (125.875) FR seulement. Obtenir le QNH de POITIERS auprès de POITIERS Approche ou BORDEAUX Contrôle 127.675
 A/A (125.875) FR only. Obtain POITIERS QNH from POITIERS Approach or BORDEAUX Control 127.675

| | | |
|-------------|---------------------------------------|-----------------------|
| RNP APCH | EGNOS Ch 41010 E03A TCH : 49 | VAR 1° E (2020) |
|-------------|---------------------------------------|-----------------------|



API : Monter RM 032° jusqu'à 3000 (2472).
 A CTX tourner à gauche route directe vers LX302 (MAX IAS 220 kt), puis vers LX304 (MAX IAS 185 kt).
 Missed APCH : Climb MAG 032° up to 3000 (2472).
 At CTX turn left direct to LX302 (MAX IAS 220 kt), then to LX304 (MAX IAS 185 kt).

THR → (NM) 11.6 7.6 2 0
 MNM AD : distances verticales en pieds, RVR et VIS en mètres / vertical distances in feet, RVR and VIS in metres. REF HGT : ALT THR

| CAT | LPV | | | LNAV-VNAV | | | LNAV | | | MVL/Circling ⁽¹⁾ | | MVL/Circling ⁽¹⁾ absence ATS | | DIST RW03 |
|-----|------------|------|-----|------------|------|-----|------------|------|-----|-----------------------------|------|---|------|---|
| | DA (H) | RVR | OCH | DA (H) | RVR | OCH | MDA (H) | RVR | OCH | MDA (H) | VIS | MDA (H) | VIS | |
| A | 930 (400) | 1500 | 214 | 930 (400) | 1500 | 216 | 930 (400) | 1500 | | 1000 (480) | 1500 | 1280 (760) | 1500 | NM 7 6 5 4 3 2 ALT 2810 2490 2170 1850 1530 1210 (HGT) (2282) (1962) (1642) (1322) (1002) (682) |
| B | 1030 (500) | 1500 | 227 | 1030 (500) | 1500 | 227 | 1030 (500) | 1500 | | 1030 (510) | 1600 | 1280 (760) | 1600 | |
| C | 1130 (600) | 2400 | 235 | 1130 (600) | 2400 | 246 | 1130 (600) | 2400 | 339 | 1450 (920) | 2400 | 1730 (1200) | 2400 | |
| D | 1230 (700) | 2400 | 245 | 1230 (700) | 2400 | 273 | 1230 (700) | 2400 | | 1450 (920) | 3600 | 1730 (1200) | 3600 | |

Observations/Remarks : (1) MVL interdites à l'Est de la piste. En fonction des conditions MTO, MVL à 1500 ft AAL.
 (1) Circling prohibited East of RWY. Depending on MET conditions, circling at 1500 ft AAL.

| | | | | | | | | | | |
|--------------|--------|-------------------|-------------------|-------------------|--------------------|--------------------|--------------------|--------------------|--------------------|--------------------|
| FLX03 - RW03 | 7.6 NM | 70 kt 6 min 31 | 80 kt 5 min 42 | 90 kt 5 min 04 | 100 kt 4 min 34 | 115 kt 3 min 58 | 130 kt 3 min 31 | 145 kt 3 min 09 | 160 kt 2 min 51 | 185 kt 2 min 28 |
| VSP (ft/min) | | 370 | 425 | 480 | 530 | 610 | 690 | 770 | 850 | 980 |