

APPROCHE AUX INSTRUMENTS

FIGARI SUD CORSE

Instrument approach

CAT A B C

ALT AD : 85 (4 hPa) THR : 85

RNP Y RWY 23

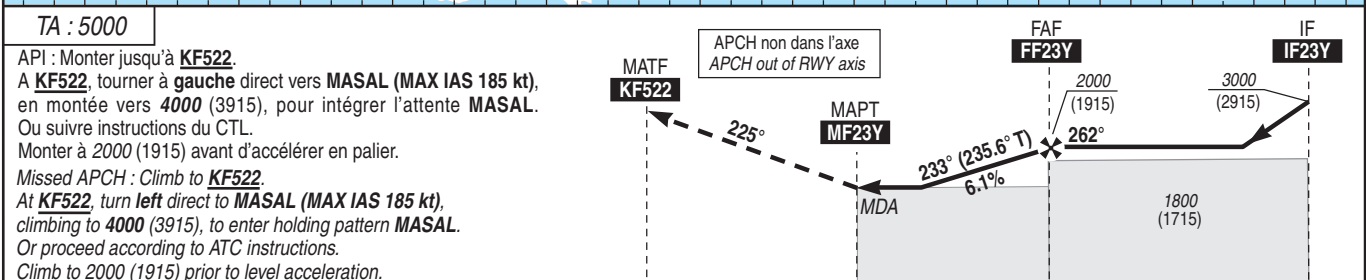
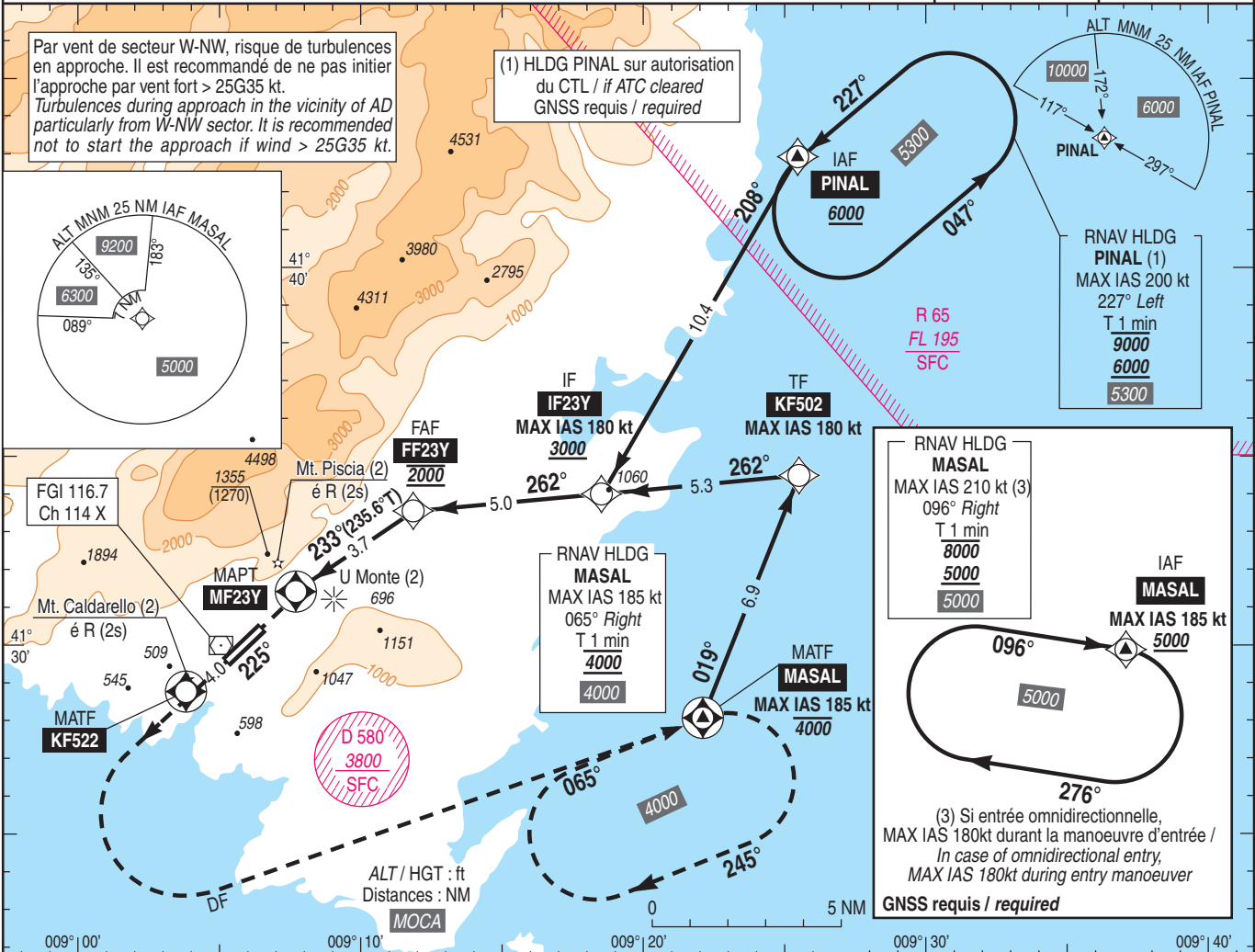
ATIS : FIGARI 118.730

APP : AJACCIO Approche/Approach 121.050

TWR : FIGARI Tour/Tower 120.300

RNP APCH

VAR 3°E (20)



THR 23 ← (NM)	2.7	0	1.3	5	10
MF23Y ← (NM)	4	1.3	0	3.7	8.7

MNM AD : distances verticales en pieds, RVR et VIS en mètres / vertical distances in feet, RVR and VIS in metres. REF HGT : ALT AD

CAT	LNAV Y			MVL / Circling (4) HJ seulement / Daytime only		DIST MF23Y (NM) 3 ALT 1740 (HGT) (1655)
	MDA (H)	RVR	OCH	MDA (H)	VIS	
A				1660 (1580)	5000	
B	1400 (1320)	5000	1314	1660 (1580)	5000	
C				1770 (1680)		

Observations / Remarks : Panne de guidage GNSS durant l'approche / GNSS guidance loss during approach : voir/see AIP ENR 1.5.
(2) Procédure inutilisable de nuit si indisponibilité des feux suivants : U Monte, Piscia, Caldarello / Procedures cannot be used at night if the following lights are not operating : U Monte, Piscia, Caldarello. Voir / See AD 2 LFKF.23
(3) MVL interdite au Nord-ouest de la piste. Circuit AD RWY 05 : Droite / Circling prohibited NW of RWY. Right hand circuit RWY 05.

FF23Y - MF23Y	3.7 NM	70 kt	85 kt	100 kt	115 kt	130 kt	145 kt	160 kt
VSP (ft/min)		3 min 10	2 min 37	2 min 13	1 min 56	1 min 43	1 min 32	1 min 24
		430	530	620	710	800	900	990