



Service
de l'Information
Aéronautique

D S N A



Liberté • Égalité • Fraternité
RÉPUBLIQUE FRANÇAISE

Phone : +33(0) 5 57 92 57 95 or 57 97
e-mail : sia.supaip@aviation-civile.gouv.fr
Internet : www.sia.aviation-civile.gouv.fr

AIRAC AIP SUP 106/19

AIRAC date : 23 MAY
Publication date : 11 APR

Subject : Creation of several temporary airspace (ZRT (Temporary Restricted Area), CTR and TMA) for the 2019
"24 heures du Mans" sports car race

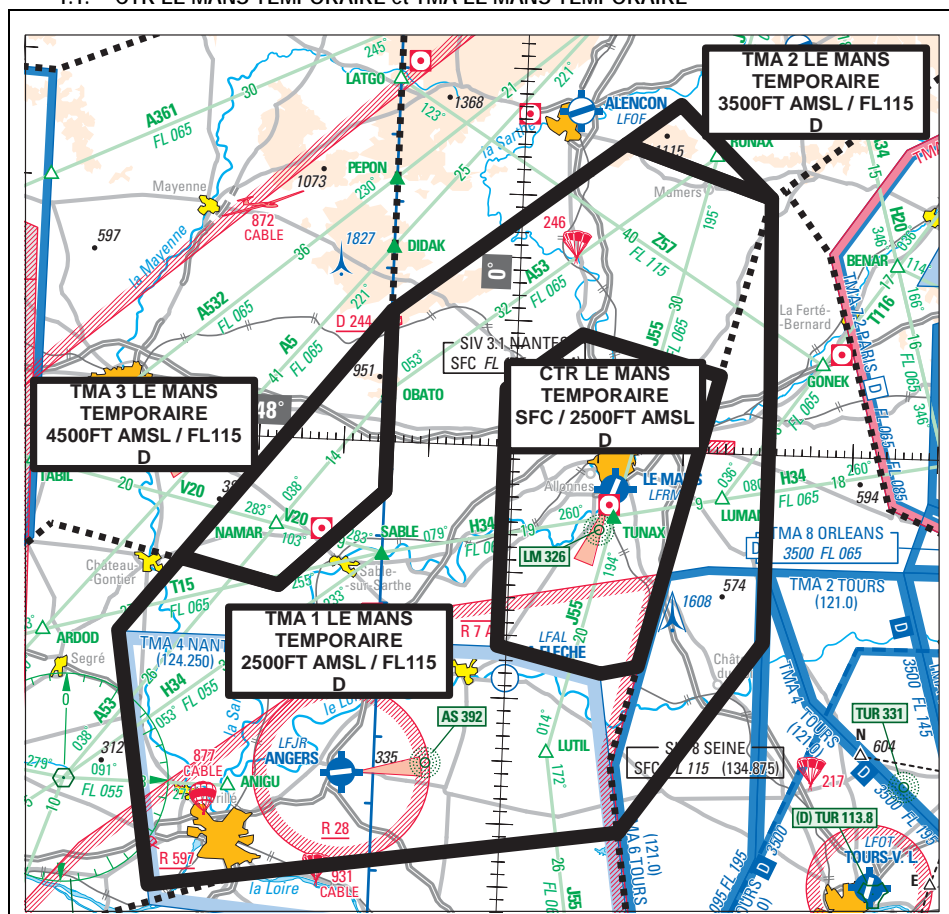
With effect : From 12 to 17 June 2019

Location: FIR : Paris LFFF, Brest LFRR - AD: Le Mans Arnage LFRM, Angers Marcé LFJR

As part of the 87th "24 heures du Mans" sports car race, a temporary airspace plan has been created. It includes a CTR and 3 temporary TMA LE MANS, and a Temporary Restricted Area (ZRT) centred at Le Mans Arnage AD.

1. AIRSPACE PLAN

1.1. CTR LE MANS TEMPORAIRE et TMA LE MANS TEMPORAIRE



DATES AND TIMES OF ACTIVITY

13	: 1200 - 1800
14-15	: 0600 - 1800
16	: 0600 - 1900
17	: 0600 - 1000

USERS INFORMATION

NANTES APP sector EST (TMA Le Mans 1, 2, 3 & 4 & TMA 4 Nantes) : 124.250 MHz

NANTES APP sector OUEST : 124.430 MHz

LE MANS TWR (CTR le Mans) : 125.900 MHz

ANGERS AFIS : 124.700 MHz

STATUS and SERVICES PROVIDED

Status :

When they are active, Temporary LE MANS CTR and Temporary LE MANS TMA 1, 2 and 3 replace the portions of airspace with which they overlap.

Services provided :

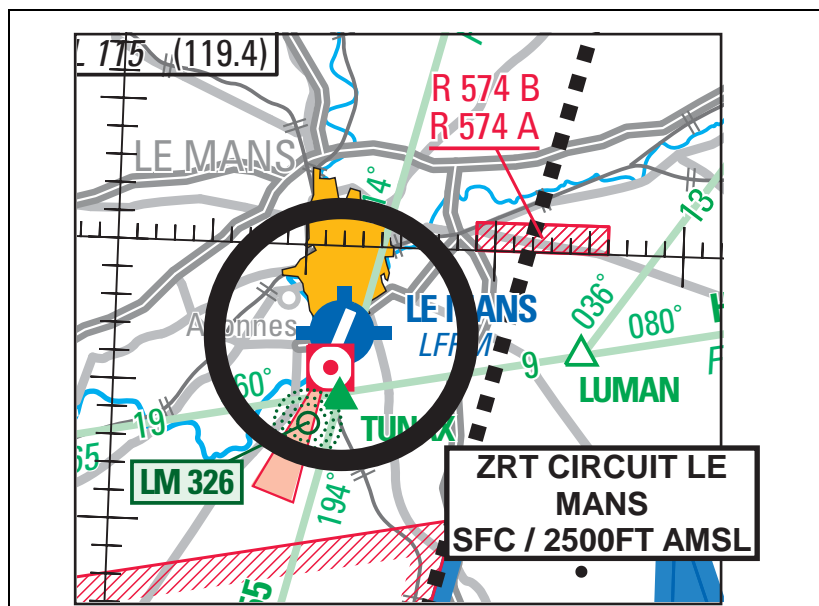
identical to those provided in class D airspace :

- in Temporary LE MANS CTR by LE MANS TWR,
- in Temporary LE MANS TMA 1, 2 and 3 by NANTES APP.

	TEMPORARY LE MANS CTR	TEMPORARY LE MANS TMA 1
Lateral limits	48°09'01" N, 000°07'38" E 48°06'05" N, 000°24'03" E 47°42'48" N, 000°15'24" E 47°42'09" N, 000°11'07" E 47°44'05" N, 000°01'09" W 48°04'30" N, 000°01'09" W 48°09'01" N, 000°07'38" E	48°05'00" N, 000°30'00" E 47°45'00" N, 000°30'00" E 47°29'35" N, 000°13'49" E 47°23'57" N, 000°40'46" W 47°44'03" N, 000°45'36" W 47°50'00" N, 000°38'43" W 47°48'12" N, 000°27'05" W 47°55'59" N, 000°15'00" W 48°10'20" N, 000°14'58" W 48°24'14" N, 000°11'58" E 48°20'17" N, 000°29'25" E 48°05'00" N, 000°30'00" E
Vertical limits	SFC / 2500FT AMSL	2500FT AMSL / FL115
Managing Authorities	LE MANS TWR 125.900 MHz	NANTES APP, secteur « Est » 124.250 MHz
Users information	LE MANS TWR 125.900 MHz	NANTES INFO 119.400 MHz SEINE INFO 134.875 MHz PARIS INFO 129.625 MHz BREST INFO 134.200 MHz RENNES INFO 134.000 MHz ANGERS AFIS 124.700 MHz
Entry conditions	GAT / OAT : compulsory avoidance except for : <ul style="list-style-type: none"> ACFT departing from or going to LE MANS ; Helicopters cleared by LE MANS ATC services over the car race track vicinity; ACFT conducting assistance, rescue or public safety missions, when their mission is not compatible with this Area avoidance; entry is possible after authorisation from the applicable Managing Authority. 	GAT IFR : upon clearance from NANTES APP; GAT / OAT : compulsory avoidance except for the: <ul style="list-style-type: none"> ACFT departing from or going to LE MANS ; ACFT under TACAN procedure, in contact with TOURS APP and flying within the limits of the portion of TMA 6 TOURS replaced by TMA 1 LE MANS ; ACFT conducting assistance, rescue or public safety missions, when their mission is not compatible with this Area avoidance; entry is possible after authorisation from the applicable Managing Authority.

	TEMPORARY LE MANS TMA 2	TEMPORARY LE MANS TMA 3
Lateral limits	48°24'14" N, 000°11'58" E 48°20'17" N, 000°29'25" E 48°27'29" N, 000°18'20" E 48°24'14" N, 000°11'58" E	48°10'20" N, 000°15'00" W 47°55'59" N, 000°15'00" W 47°48'12" N, 000°27'05" W 47°50'07" N, 000°38'38" W 48°10'20" N, 000°15'00" W
Vertical limits	3500FT AMSL / FL115	4500FT AMSL / FL115
Managing Authorities	NANTES APP secteur Est/East sector 124.250 MHz	NANTES APP secteur Est/East sector 124.250 MHz
Users information	NANTES INFO 119.400 MHz SEINE INFO 134.875 MHz PARIS INFO 129.625 MHz BREST INFO 134.200 MHz RENNES INFO 134.000 MHz ANGERS AFIS 124.700 MHz	NANTES INFO 119.400 MHz SEINE INFO 134.875 MHz PARIS INFO 129.625 MHz BREST INFO 134.200 MHz RENNES INFO 134.000 MHz ANGERS AFIS 124.700 MHz
Entry conditions	GAT IFR : upon clearance from NANTES APP; GAT VFR / OAT : compulsory avoidance except for : <ul style="list-style-type: none"> ACFT departing from or going to LE MANS ; ACFT conducting assistance, rescue or public safety missions, when their mission is not compatible with the avoidance; entry is possible after authorisation from the applicable Managing Authority. 	

1.2. ZRT CIRCUIT LE MANS



DATES AND TIMES OF ACTIVITY of ZRT 5

12	: 1000 - 2359
13	: 0000 - 1200, 1800 - 2359
14 - 15	: 0000 - 0600, 1800 - 2359
16	: 0000 - 0600, 1900 - 2359
17	: 0000 - 0600

STATUS and SERVICES PROVIDED

Status

Temporary Restricted Area (ZRT) protecting ACFT flying as part of "24H du Mans" car race.

Services provided

Flight information and alert provided by LE MANS INFO

ZRT CIRCUIT LE MANS	
Lateral limits	Circle radius 4.5 NM centred at : 47°56'55"N, 000°12'06"E (LFRM ARP)
Vertical limits	SFC / 2500FT AMSL
Managing authority	LE MANS INFO
Users information	Actual time slots provided by : LE MANS INFO : 125.900 MHz NANTES INFO : 119.400 MHz
Entry conditions	OAT/GAT : radio contact mandatory with LE MANS INFO

1.3. ADDITIONAL ACTIVITIES

Restricted Areas LF-R 574 A and B AUVOURS are not activated when Temporary LE MANS TMA are active.
Users must note there will be heavy helicopter traffic over the car-race track, in the East of the aerodrome.

2. USE OF THE AERODROME OF LE MANS ARNAGE (LFRM)

From 12 June, 1000 to 17 June, 1000, the use of LE MANS AD is reserved for authorized traffic only.
LE MANS AD is closed to all traffic outside of ATS hours, except for authorized helicopters.
The authorizations for arrivals and departures given by the AD manager do not override ATFM regulation measures.
If air traffic flow regulation measures have been established, ATFM slots override local provisions.

2.1. GENERAL INFORMATION

2.1.1. Special instructions for all flights

Y and Z flight plans, or flight plans transmitted in flight, for ACFT bound for LE MANS ARNAGE AD are not authorized.
Training flights at LE MANS AD (LFRM) are forbidden.
LE MANS AD (LFRM) cannot be chosen as alternate AD on flight plans.
Helicopters must comply with the aeroplanes procedures.

2.1.2. Restrictions on flights

From 12 June, 1000 UTC until 17 June, 1000 UTC :

- Flying over the car-race track is prohibited for all non-authorised ACFT under 2500ft ASML (authorisation provided by the "Direction de la Sécurité de l'Aviation Civile Ouest / Délégation Pays de La Loire", mail : dsac-o-pdl-ld@aviation-civile.gouv.fr);
- gliders and ULM are forbidden at LE MANS;
- local flights and AD circling at LE MANS are subject to prior authorisation from ATS and a filed flight intention to Le Mans Reporting Office;
- unpaved ACFT stands may be offered to pilots in command as their parking space at LE MANS;
- LE MANS AD PCL is not activated.

On 15th June, between 0800 and 1200, **priority is given to flights going to Le Mans.**

On 16th June starting from 1000, at Le Mans, **filing of a flight plan or changing a flight plan won't be allowed.**

On 16th June, **arrivals at Le Mans are suspended from 1200 to 1700.**

Heavy helicopter activity over the car-race track, in the Eastern part of Le Mans AD.

2.1.3. Restrictions on activities

The following activities are all suspended when the TEMPO LE MANS TMA and the ZRT CIRCUIT LE MANS are active:

- Parachuting activities No 220 LE MANS ARNAGE AD, No 203 LA FLECHE THOREE LES PINS AD and No 246 PIACE ;
- Winching activity No 887 LE MANS AD ;
- Model ACFT activity No 8390 Le Mans.

2.1.4. Arrival procedures

5 minutes before entering the ZRT, pilots listen to LE MANS TWR in order to obtain weather information and the active RWY.

Aerodrome circling : right hand when RWY 20 is active and left hand when RWY 02 is active, to avoid flying over the car-race track.

2.1.5. Ground movements

Upon clearance, and at the latest once the RWY is cleared, pilots contact LE MANS SOL (*LE MANS GROUND*).

They follow the arrows and clearances to get to stands T, B, J, M and H1 for helicopters.

Helicopter stand H2 is reserved.

2.1.6. Formalities upon arrival

As from 14 June, 0600, pilots must present themselves to the reporting office upon arrival, after the customs, passport controls, police and airport formalities, to communicate their estimated date and time of departure (EOBT), whatever type of flight it is (IFR or VFR).

No departure will be granted on 16 June to crews who did not take this step.

2.1.7. Formalities on departure

Pilots must go to the reporting office to check if their flight plan was acknowledged.

Pilots must anticipate the time needed for the security-related departure formalities.

2.1.8. Access restrictions

All flights must obtain prior permission from the "CCI" (Chamber of Commerce and Industry) of Le Mans (Phone: +33(0)2 43 84 00 43 /

Fax: +33(0)2 43 84 99 11 or by e-mail : aeroport@lemans.cci.fr for arrivals and parking space at LFRM.

2.2. ARRIVAL AND DEPARTURE PROCEDURES FOR GAT VFR

2.2.1. Weather minima

Inbound and outbound aircraft: VIS 3000 m, ceiling: 800 ft.

Helicopters: VIS 800 m, ceiling: 600 ft

2.2.2. REPORTING POINTS BEFORE ENTERING OR EXITING "CTR LE MANS TEMPORAIRE"

See Appendix I "Reporting points before entering / exiting "CTR LE MANS TEMPORAIRE"

2.2.3. Departure procedures

The first contact must be made on the PREFLIGHT frequency to obtain the start up clearance.

Visual departure RWY 02 and RWY 20 (see VAC AD 2 LFRM ATT 01 and AD 2 LFRM TXT 01) : after take-off, do not take into account the published route alterations of 30° to comply with the no-fly zone over the car-race track.

For Sunday 16 June, the flight plans must be filed at the latest on that day, before 1000.

2.2.4. Arrival procedures

5 minutes before flying over the "CTR LE MANS TEMPORAIRE" entry point, pilots must listen to Le MANS TWR to obtain weather information and the RWY in use.

2.3. ARRIVAL AND DEPARTURE PROCEDURES FOR GAT IFR

Air Traffic Flow regulation measures for IFR arrivals and departures at Le Mans LFRM may be implemented.

2.3.1. Departure procedures

Pilots give to the Reporting Office their Estimated Time of Departure (ETD). Effective departure remains subject to ATFM measures that may be in force. The PREFLIGHT frequency "LE MANS PREVOL" will be used to obtain the CTOT, and to request start-up.

2.3.2. Arrival procedures

At their first radio contact with NANTES APP, pilots must announce whether they are able to fly an RNAV/GNSS APCH procedure.

On arrival, crews should inform as soon as possible about their fuel needs and indicate their refuelling desired date and time.

The instrument approach procedures published in AIP FRANCE remain valid during this event, **with the following modifications:**

- Visual Manoeuvring without prescribed track (circling) must be flown West of the facilities, because flying over the race track located in the East of the AD is prohibited.
- RWY 02 approach :
 - in case of radar vectoring, pilots must expect end of vectoring on RWY axis at 11 NM and 3000ft QNH.
 - the end of vectoring will be followed by the final approach clearance (implicit clearance to descend to 2000ft QNH)
- Missed approach:
 - in case of missed approach, regardless of the procedure and RWY in use, climb up to 3000ft QNH in the axis and follow ATC instructions (*vectoring for a new approach*).
- in case of holding, the following holding patterns may be used :
 - LM : 326 kHz, inbound QDM 021°, outbound time : 1 minute. Minimal level : 3000ft QNH / maximal level : FL110
 - MAPEB : inbound QDM 111°, outbound time 1 minute. Minimal level 3000ft QNH / maximal level FL110
 - AS : 392 kHz, inbound QDM 082°, outbound time 1 minute. Minimal level 3000ft QNH / maximal level 6000ft QNH.

2.4. Operating hours (UTC)

ATC Service:	on 13 June :	1200-1800	Reporting office :	on 14 and 15 June :	0600-1800
	on 14 and 15 June :	0600-1800		on 16 June :	0600-1900
	on 16 June :	0600-1900		on 17 June :	0600-1000
	on 17 June :	0600-1000			

The Customs and Police, Refuelling and Rescue and fire fighting service ("RFFS") (level 5) hours are identical to those of the ATC Service.

3. USE of THE AERODROME of ANGERS MARCE (LFJR)

From 13 June, 1200 UTC to 17 June 2019, 1000 UTC :

- Angers AD (LFJR) cannot be chosen as alternate AD in flight plans,
- IFR training flights at Angers AD (LFJR) are forbidden,
- Y and Z filed flight plans, and flight plans transmitted in flight, for flights bound for Angers AD (LFJR) are not allowed,
- Aerobatics activity No 6363 « Durtal » is suspended during the activation of TEMPORARY LE MANS TMA 1,
- local gliding activity (at LFJR) is possible but the relevant special protocol must be followed when TEMPORARY LE MANS TMA 1 is active.

4. ATS FREQUENCIES

NANTES APP secteur Ouest/ <i>West sector</i>	124.430 MHz	NANTES APP secteur Est/ <i>East sector</i>	124.250 MHz
NANTES INFO	119.400 MHz	LE MANS TWR	125.900 MHz
LE MANS SOL/ <i>GROUND</i>	123.250 MHz	LE MANS PRÉVOL/ <i>PREFLIGHT</i>	127.350 MHz
PARIS INFO	129.625 MHz	BREST INFO	134.200 MHz
SEINE INFO	134.875 MHz	ANGERS AFIS	124.700 MHz
RENNES INFO	134.000 MHz		

APPENDIX I
Reporting points before entering / exiting "CTR LE MANS TEMPORAIRE"

Reporting points before entering / exiting "CTR LE MANS TEMPORAIRE":

N : Interchange of Beaumont-sur-Sarthe (on motorway A28 (Alençon to Le Mans)).

W : Intersection of Motorway Laval/Chartres and National Road « RN 157 ».

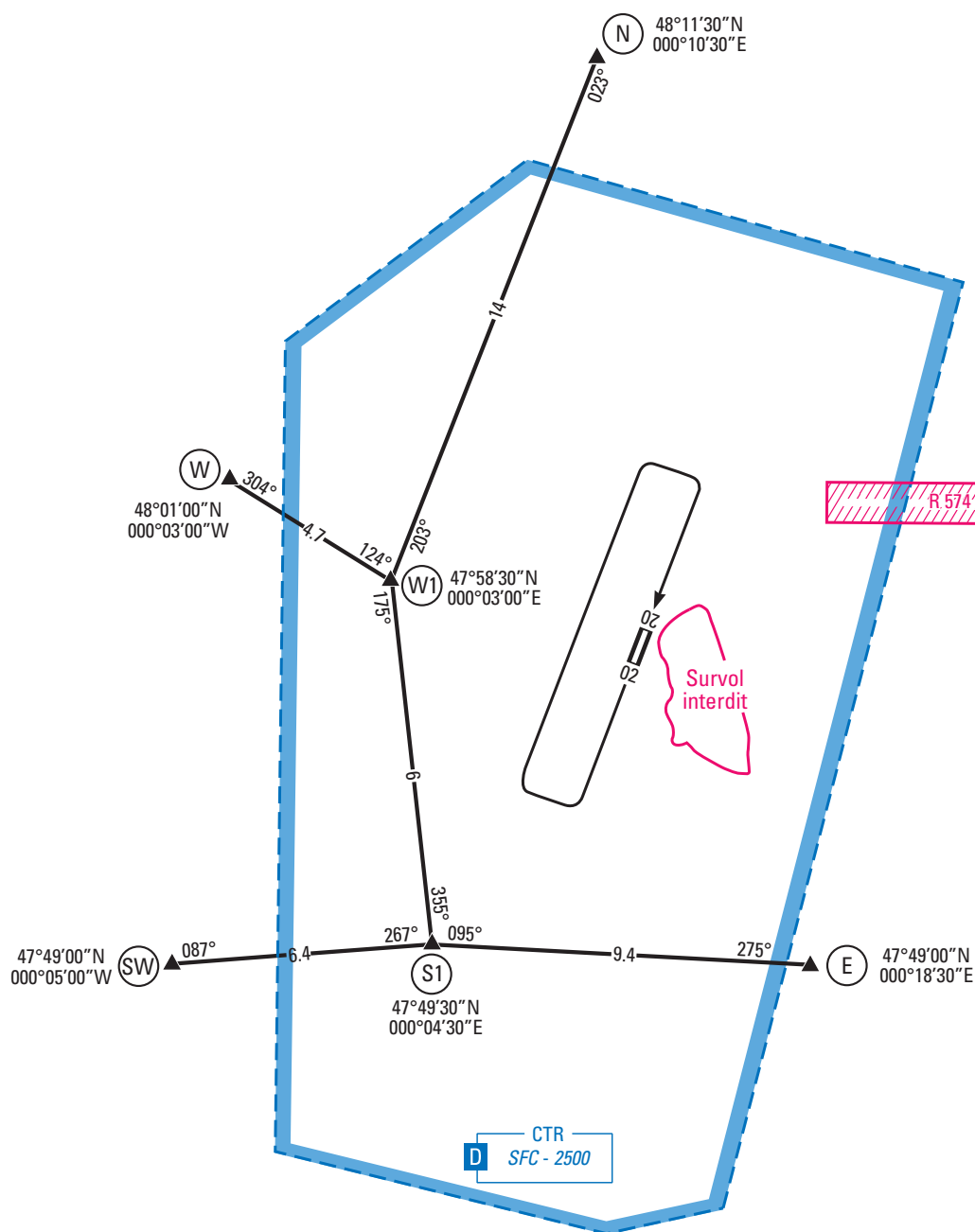
W1 : "Le Mans Sud" interchange, at the edge of Motorway « A 11 ».

SW : Malicorne village.

S1 : Cérans-Foulletourte village on national road « RN 23 ».

E : Intersection of Motorway "Le Mans-Tours" and National Road « RN 138 » (on the East side of Ecommoy city).

LE MANS TWR 125.900 MHz
LE MANS Prévol/*Preflight* 127.350 MHz
LE MANS Sol/*Ground* 123.250 MHz



APPENDIX II
LE MANS AD APRON Chart

Valable / Valid :

Du / From : 13 JUN 2019, 1200 UTC au/to 17 JUN 2019, 1000 UTC

