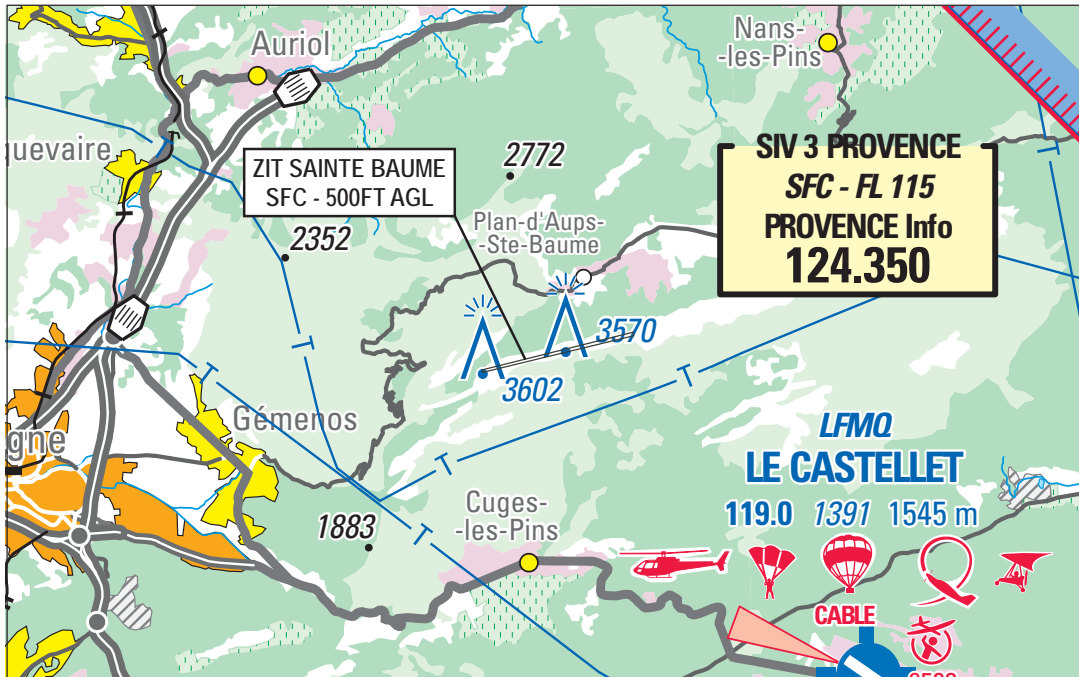


Subject : Creation of a Temporary Prohibited Area (ZIT) Sainte Baume (FIR: Marseille LFMM)

With effect : From 07 February to 07 August 2019



Excerpt from 1 : 250 000 « Marseille Delta du Rhône » SIA map 2018 2nd edition

ACTIVITY

Low altitude flying prohibited over specific Defence installations

DATES AND TIMES OF ACTIVITY

H24

MANAGING AUTHORITY

NIL

ENTRY CONDITIONS

GAT/OAT : entry prohibited, remotely piloted ACFT included.

Entry is possible for :

- ACFT conducting assistance, rescue or public safety missions, when their mission is not compatible with the avoidance of the ZIT,
- Defence ACFT, including State remotely piloted ACFT,
- French Federation of hang gliding activity located on the massif.

STATUS

Temporary Prohibited Area (ZIT) replacing the airspace with which it overlaps.

SERVICES PROVIDED

NIL

LATERAL AND VERTICAL LIMITS

ZIT SAINTE BAUME

43°18'43.30" N, 005°41'20.00" E
43°18'41.60" N, 005°41'20.50" E
43°19'03.00" N, 005°43'42.30" E
43°19'05.44" N, 005°43'42.00" E
43°18'43.30" N, 005°41'20.00" E

SFC / 500 FT AGL