

 <p><b>Service de l'Information Aéronautique</b></p> <p><b>D S N A</b></p>	 <p>Liberté • Égalité • Fraternité RÉPUBLIQUE FRANÇAISE</p> <p>Phone : +33(0) 5 57 92 57 95 or 57 97 e-mail : <a href="mailto:sia.supaip@aviation-civile.gouv.fr">sia.supaip@aviation-civile.gouv.fr</a> Internet : <a href="http://www.sia.aviation-civile.gouv.fr">www.sia.aviation-civile.gouv.fr</a></p>	<p><b>AIP SUP 004/19</b> Publication date : 17 JAN</p>
--	--	--

**Subject** : Restrictions of use of Figari Sud Corse AD LFKF, due to regulatory compliance works on RWY 05-23 ends and rehabilitation of the whole RWY

---

**With effect** : From 31 January 2019 to 01 May 2019

---

**This AIP SUP supersedes AIP SUP 163/18.**






#### Introduction :

This AIP SUP is about compliance works on aeronautical infrastructures, installation of a PAPI for RWY 23, creation of 90 m RESA (Runway End Safety Areas) at each end of RWY and rehabilitation of the whole RWY.

#### Description :

All of these works will be carried out over a period of about 8 months, beginning on 13 September 2018.

The works will be carried out in 5 phases according to the following provisions :

-  Phase 0 : Preparation of installation of the living area.
-  Phase 1 : Works related to work area installations, levelling of the RWY strip, cleaning in and around the RWY strip, RESA embankments, out of airport operating hours : works carried out in the day time during off-peak hours and maybe at night.
-  Phase 2 : Works with a displaced THR 05, RWY length reduced to 2000 m for 4 weeks, then the RWY will be closed. Works will be carried out on RWY 05 RESA and 05 turn around pad in the day time and night time. Creation of embankments of RWY 23 RESA and RWY strip during off-peak hours, in the daytime (RWY not operating)
-  Phase 3 : RWY closed for 5 weeks. RWY rehabilitation, taxiway connection, THR 23 turn around pad and intermediate turn around pads, RESA (RWY 23), cleaning, levelling. Lit X RWY closure marker at each end of RWY.
-  Phase 4 : Finishing work carried out out of airport operating hours (during day time off peak hours, and in the night time if phase 3 has not been completed).

**This AIP SUP aims at describing Phases 2, 3 and 4.**

**Each phase will be activated by NOTAM** specifying the dates (**all dates in this AIP SUP are for information only**; they will be confirmed by NOTAM).

#### General provisions :

A day and night time marking will be in place according to the phases.

**I. Phase 2 from 21 January 2019 to 17 February 2019**

see chart on § I c

During this phase :

- Creation of RESA (THR 05)
- Levelling of RWY strip
- Rehabilitation of the THR 05 paved turn around pad

**Consequences and restrictions on operating infrastructures :**

- Work machines on THR 05 and in the RWY strip;  
Service road going from one threshold to the other, parallel to the RWY, positioned 95 m from RWY axis;
- Closure of part of the general aviation apron : stands T41 to T49 (grass apron) ; stands 2, 3, 4, D1 to D3, E1 to E7 (see AIP AD 2 LFKF APDC 01) ;
- FATO and helicopter stands H1, H2, H3 not available;
- Stands 7 (and 7b) reserved for public safety, customs and gendarmerie helicopters ;
- 480 m DTHR 05, runway declared distances reduced;
- Aircraft category and capacity restrictions :
  - ➔ the following scheduled aircraft can use the airport :
    - CRJ 1000, MTOW restricted to 38 995 kg
    - A 319, MTOW restricted to 62 000 kg
    - A 320, MTOW restricted to 68 000 kg
    - ATR 72
    - CRJ 700
- Figari LFKF AD may not be used as an alternate AD;
- Figari LFKF AD reserved Monday to Friday for scheduled commercial ACFT, and for general aviation with an authorization from the airport manager (e-mail at : fsc.ppr@sudcorse.cci.fr) and reserved for locally based ACFT during their allocated slots.

**Consequences on operating procedures :**

- Aerodrome closed for helicopters except the following :
  - public safety
  - customs
  - gendarmerie
  - helicopters carrying out crew transferring missions
 Reference helicopters : AS355 / AS555 / EC145  
Overall length : 13.03 m / Rotor diameter : 11.00 m;
- Arrival and departure procedures for authorized helicopters on RWY only, and translation via TWY Charlie to their reserved Stand (7);
- Push back and taxiing procedures on commercial apron may be delayed in case of helicopter traffic;
- Aircraft turn around (RWY 05) on RWY width; **see chart on § I c**
- IFR procedure RWY 05 VOR not available, IFR procedure RWY 05 GNSS LNAV available with circling minima at *1900 ft.*

I a. RWY 05

	During the works
QFU	05
Critical aircraft reference code	4C
Operating categorie(s)	Day time VFR GNSS NPA
Special equipment	PAPI
Special operating conditions / restrictions	Take off with RVR >= 400m
RWY length x width (m)	2000 x 45
RWY strip length x width (m)	2120 x 280
RESA length x width (m)	-
Declared distances (m)	
TORA	2000
TODA	2060
ASDA	2000
LDA	2000

Temporary modification of THR 05 :

DTHR 05 altitude : 45.93 ft

DTHR 05 coordinates : 41° 29' 51.50" N - 009° 05' 24.90" E

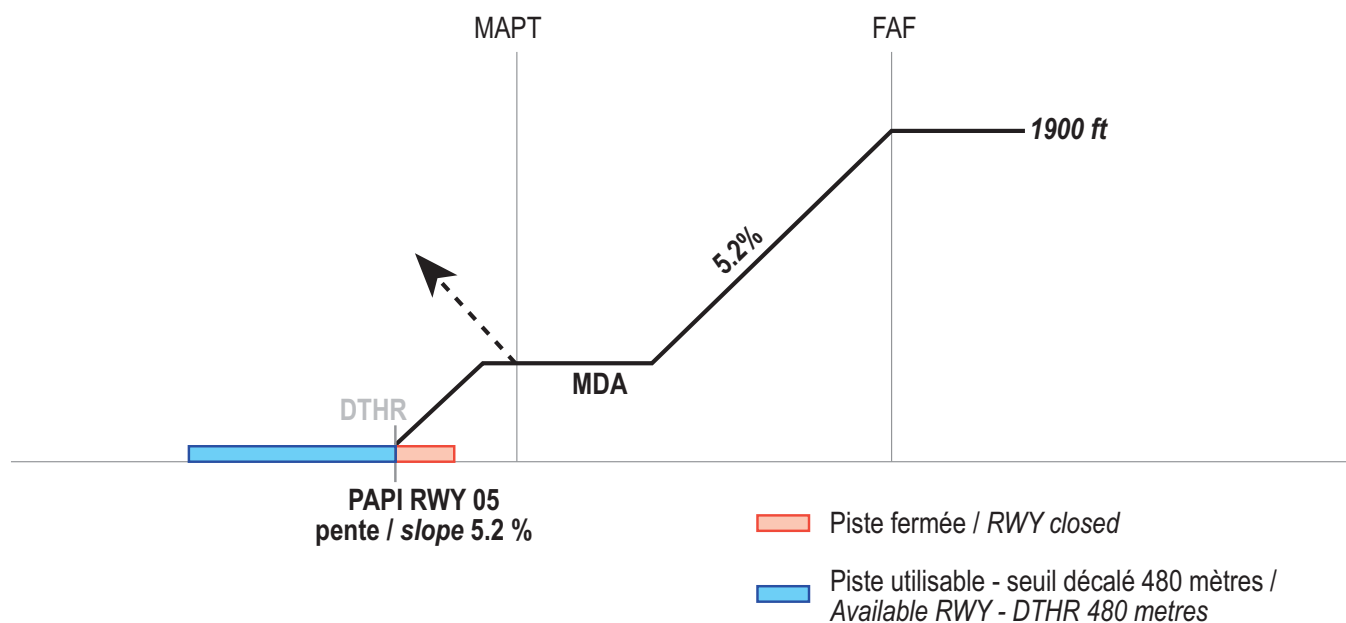
Consequences on IFR procedures :

- RWY 05 RNAV GNSS approach with circling (MVL) minima 1900 ft
- Approach « RWY 05 VOR » not available

**Procédure d'approche PISTE 05 avec seuil décalé 480 mètres /  
Approach procedure RWY 05 with 480 metre DTHR**

**Arrivées sur procédures publiées / Arrivals on published procedures  
(RNAV GNSS RWY 05)**

- Descente jusqu'à la MDA (H) de la MVL pour acquérir les références visuelles /  
*Descend to the MVL (circling) MDA (H) to acquire the visual references,*
- Puis mise en palier jusqu'à intercepter le plan de descente du PAPI associé au seuil décalé temporaire. /  
*Then level off until intercepting the descent path of the PAPI associated with the temporary DTHR.*



I b. RWY 23

	During the works
QFU	23
Critical aircraft reference code	4C
Operating categorie(s)	Day time VFR; IFR GNSS LPV precision approach; IFR GNSS NPA approach (LNAV).
Special equipment	Turn around pad
Special operating conditions / restrictions	Take off with RVR >= 400 m
RWY length x width (m)	2000 x 45
RWY strip length x width (m)	2120 x 280
RESA length x width (m)	-
Declared distances (m)	
TORA	2000
TODA	2060
ASDA	2000
LDA	2000

Consequences on IFR procedures :

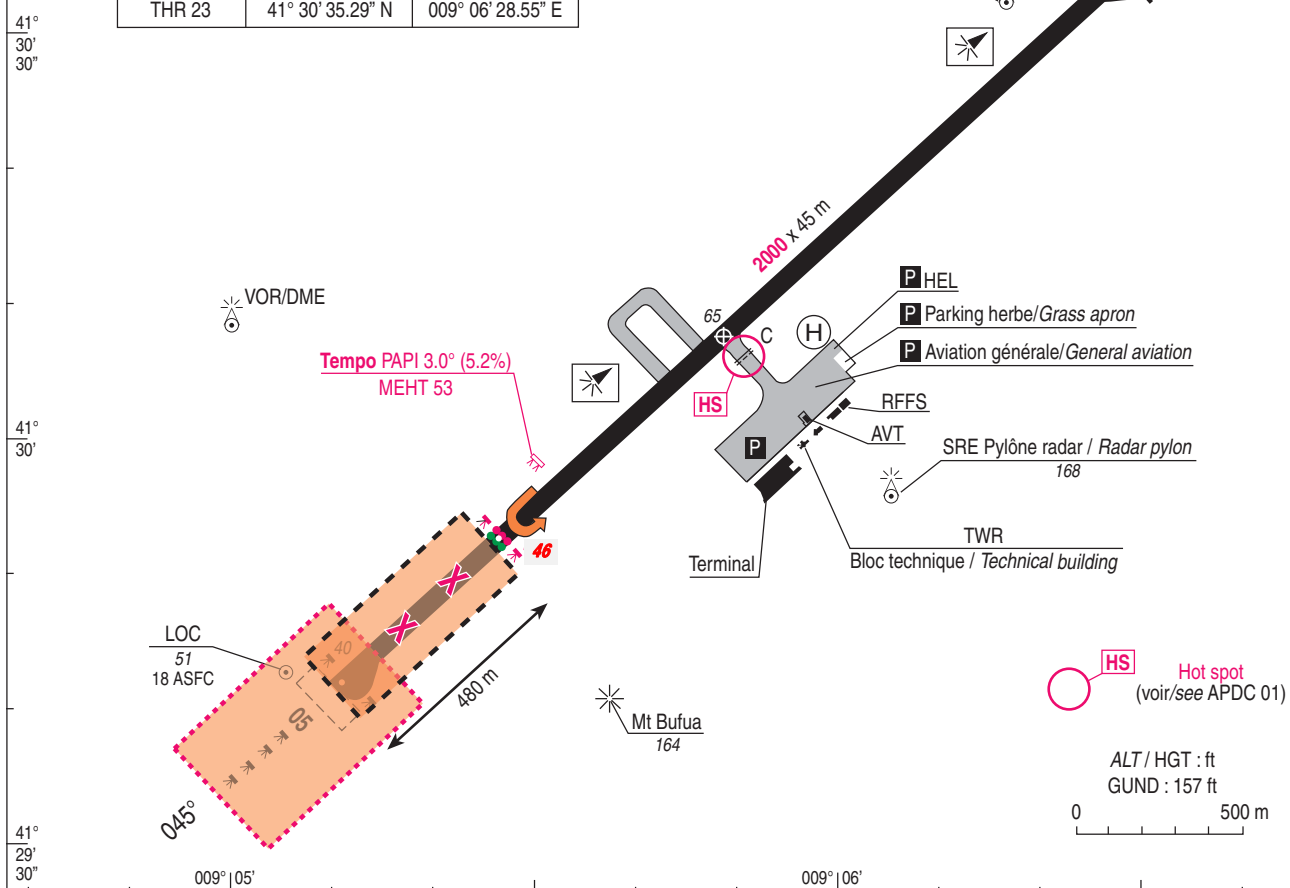
- RWY 23 ILS approach not available

THR 23 not modified

## I c. Chart « AD 2 LFKF ADC 01 » modified due to works

# FIGARI SUD CORSE PHASE 2

TYPE	LATITUDE	LONGITUDE
<b>DTHR 05</b>	<b>41° 29' 51.50" N</b>	<b>009° 05' 24.90" E</b>
THR 23	41° 30' 35.29" N	009° 06' 28.55" E



- Zone de travaux / Work area
- Portion de piste fermée / Portion of RWY closed
- X Balisage de portion de piste fermée / X area closure marker
- ↪ Retournement provisoire sur piste / Tempo turn around on RWY
- Balisage de seuil 05 et fin de piste 23 décalés / Lighting of DTHR 05 and RWY 23 displaced end

## II. Phase 3 from 18 February 2019 to 24 March 2019

During this rehabilitation phase, the RWY will be closed.  
 Creation of a tempo FATO.  
 Helicopter Stand 7 (and 7b) remain unchanged.

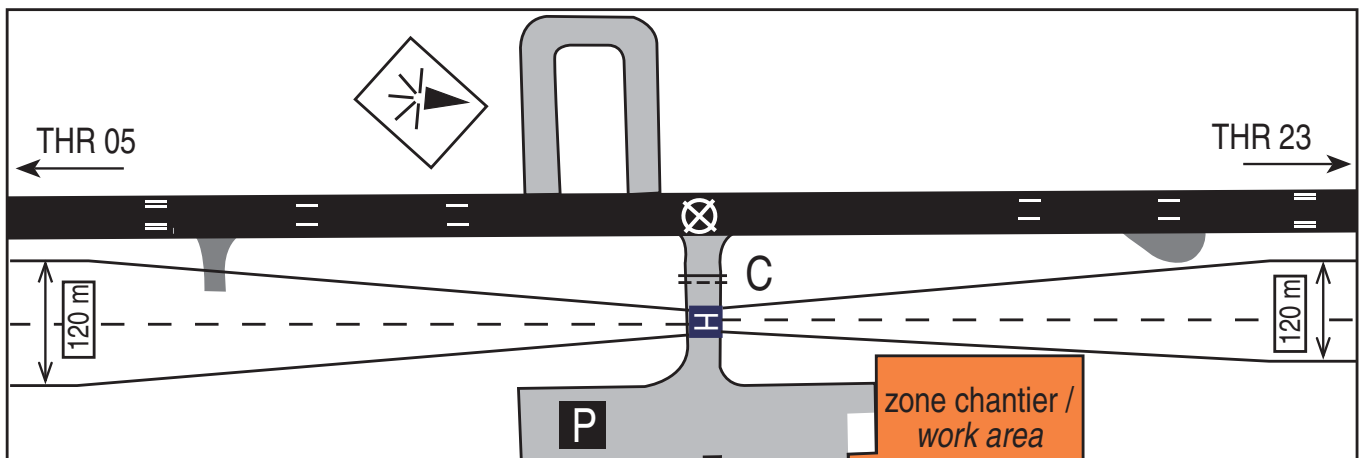
### Consequences and restrictions on operating infrastructures :

- Aerodrome closed for helicopters except the following ones :
  - o public safety
  - o customs
  - o gendarmerie
- Reference helicopters : AS355 / AS555 / EC145  
 Overall length : 13.03 m / Rotor diameter : 11.00 m.

### Consequences on helicopter procedures :

- ARR/DEP procedures :
  - o traffic pattern altitude 600 ft in accordance with Visual Landing VAC chart
  - o Restrictions : ARR/DEP in RWY axis only following the applicable funnel landing with a 4.5% slope
- Tempo FATO on TWY C
- Night : FATO is lit
- FATO daytime marking : « H » in a square (landing area)

See chart below



### III. Phase 4 from 25 March 2019 to 01 May 2019

RWY available again.

#### Consequences and restrictions on operating infrastructures :

- Work machines on THR 05 and in the RWY strip.  
Service road going from one threshold to the other, parallel to the RWY, positioned 95 m from RWY axis
- Closure of part of the general aviation apron : stands T41 to T49 (grass apron) ; stands 2, 3, 4, D1 to D3, E1 to E7 (see AIP AD 2 LFKF APDC 01) ;
- FATO and helicopter stands H1, H2, H3 not available ;
- Temporary FATO unavailable;
- Stand 7 (and 7b) reserved for public safety, customs and gendarmerie helicopters;
- Figari LFKF AD reserved for scheduled commercial ACFT, and for general aviation with an authorization from the airport manager (e-mail : fsc.ppr@sudcorse.cci.fr) and reserved for locally based ACFT during their allocated slots.

#### Consequences on operating procedures :

- Aerodrome closed for helicopters except the following ones :
  - o public safety
  - o customs
  - o gendarmerie
  - o helicopters carrying out crew transferring missions
 Reference helicopters : AS355 / AS555 / EC145  
 Overall length : 13.03 m / Rotor diameter : 11.00 m
- Arrival and departure procedures for authorized helicopters on RWY only, and translation via TWY Charlie to their reserved Stand (7);
- Push back and taxiing procedures on commercial apron may be delayed in case of helicopter traffic;
- Approach lighting turned back on (5 lights over a distance of 300 metres).



III a. RWY 05

	After the works
QFU	05
Critical aircraft reference code	4C
Operating categorie(s)	Day time VFR; IFR GNSS NPA approach and VOR
Special equipment	Turn around pad, PAPI
Special operating conditions / restrictions	Take off when RVR >= 400 m
RWY length x width (m)	2420 x 45
RWY strip length x width (m)	2540 x 280
RESA length x width (m)	90x90
Declared distances (m)	
TORA	2420
TODA	2480
ASDA	2420
LDA	2420

No consequences on IFR procedures.

III b. RWY 23

	After the works
QFU	23
Critical aircraft reference code	4C
Operating categorie(s)	Day time VFR; IFR precision app ILS CAT I IFR GNSS approach
Special equipment	Turn around pad, PAPI
Special operating conditions / restrictions	CAT I app when RVR > 1000 m Take off when RVR >= 400 m
RWY length x width (m)	2420 x 45
RWY strip length x width (m)	2540 x 280
RESA length x width (m)	90x90
Declared distances (m)	
TORA	2420
TODA	2480
ASDA	2420
LDA	2420

No consequences on IFR procedures.